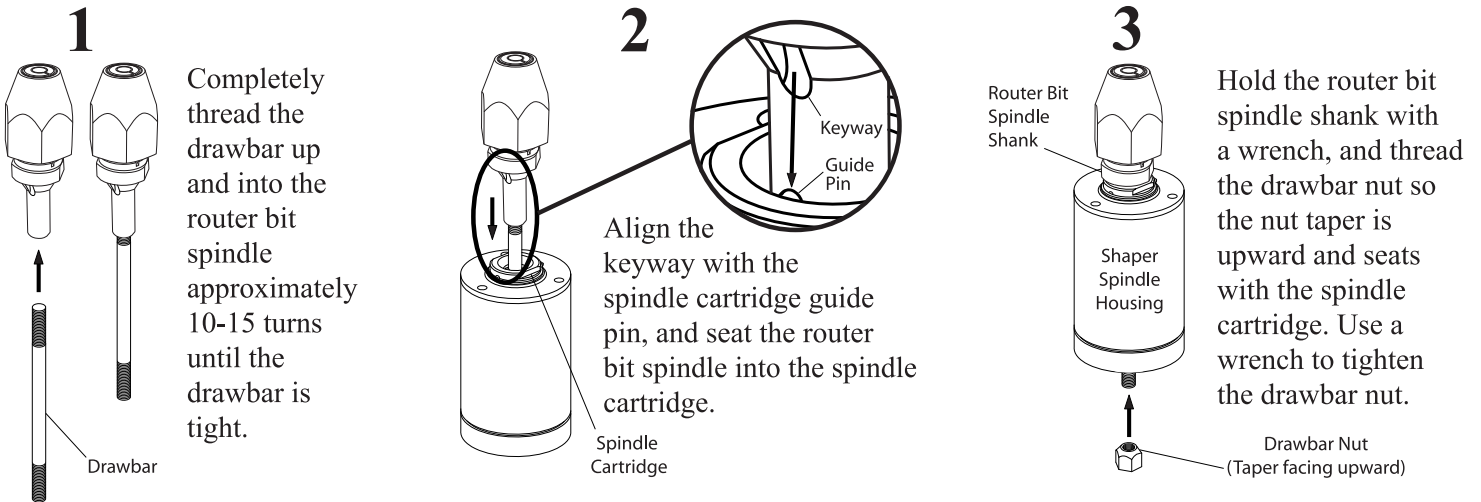


G1705 and G1794 Router Bit Spindle Installation Instructions

⚠WARNING

When using this router bit spindle, **ONLY** operate your shaper in the **COUNTER-CLOCKWISE** direction as looking downward at the spindle. Router bits are designed to cut in the counter-clockwise direction only. **DO NOT** operate the shaper in the clockwise direction to make any sort of router bit back-cut. If this warning is ignored, the workpiece can kickback, the collet can loosen and throw the cutter causing injury, or death.



G1705 and G1794 Router Bit Spindle Installation Instructions

⚠WARNING

When using this router bit spindle, **ONLY** operate your shaper in the **COUNTER-CLOCKWISE** direction as looking downward at the spindle. Router bits are designed to cut in the counter-clockwise direction only. **DO NOT** operate the shaper in the clockwise direction to make any sort of router bit back-cut. If this warning is ignored, the workpiece can kickback, the collet can loosen and throw the cutter causing injury, or death.

