



# MODEL G5343 1/8" & 1/4" AIR DIE GRINDER KIT INSTRUCTION SHEET





<b>⚠ WARNING</b>	
	<b>EYE/EAR INJURY HAZARD!</b> Wear safety glasses and hearing protection during use of this tool!
	<b>INJURY HAZARD!</b> Always disconnect tool from air to prevent unexpected operation during service!
	<b>EXPLOSION HAZARD!</b> Never exceed 90 PSI! Only use cutters rated for 22,000 RPM or less!
	<b>RESPIRATORY HAZARD!</b> Grinding produces fine dust. Wear the appropriate protection during use!



Figure 1. Model G5343.

### Introduction

Generating a fast-cutting 22,000 revolutions per minute, this professional quality die grinder comes complete with five 1/8" and five 1/4" shank mounted stones in an assortment of shapes and grits for most grinding chores. Fitted in a molded high-impact plastic case, this powerful grinder also includes two changing wrenches.

### Inventory

- A. Die Grinder ..... 1
- B. 1/4" NPT Air Fitting ..... 1
- C. Collet Wrenches ..... 2
- D. Mounted Stones ..... 10
- E. Wrench Set ..... 1

### Operation

Insert your 1/8" tool bit into the collet and tighten with the collet wrenches provided. Change the collet by removing the collet nut with the wrench set. Connect the air fitting to the die grinder and then to your regulated air source.

This micro die grinder **MUST** have 3-4 drops of oil directly dropped into the air fitting before each use as shown in **Figure 2**.

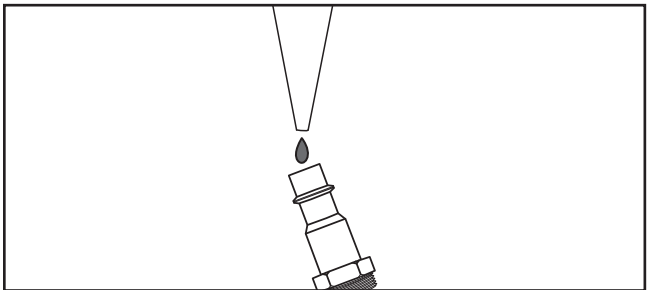
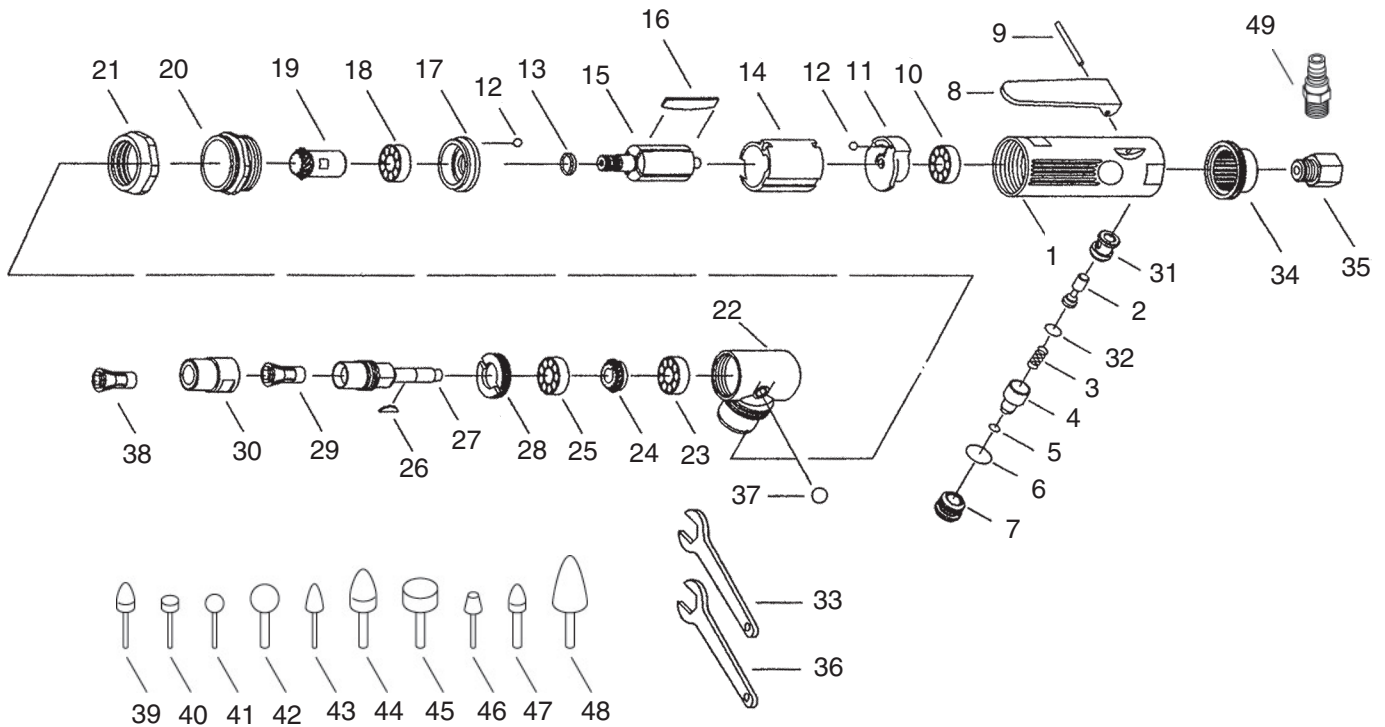


Figure 2. Lubricating directly into air fitting.

*If you need help with your new pneumatic tool, call our Tech Support at: (570) 546-9663.*

# G5343 Parts Breakdown and List



REF	PART #	DESCRIPTION
1	P5343001	HOUSING
2	P5343002	THROTTLE VALVE
3	P5343003	THROTTLE VALVE SPRING
4	P5343004	AIR REGULATOR
5	P5343005	O-RING
6	P5343006	O-RING
7	P5343007	VALVE SCREW
8	P5343008	THROTTLE LEVER
9	P5343009	THROTTLE LEVER PIN
10	P5343010	REAR ROTOR BALL BEARING
11	P5343011	REAR END PLATE
12	P5343012	STEEL BALL
13	P5343013	BEARING SPACER
14	P5343014	CYLINDER
15	P5343015	ROTOR
16	P5343016	ROTOR BLADE
17	P5343017	FRONT END PLATE
18	P5343018	FRONT ROTOR BALL BEARING
19	P5343019	PINION GEAR
20	P5343020	MOTOR CLAMP
21	P5343021	HOUSING CAP
22	P5343022	ANGLE HEAD HOUSING
23	P5343023	REAR SPINDLE BALL BEARING
24	P5343024	SPINDLE GEAR
25	P5343025	FRONT SPINDLE BALL BEARING

REF	PART #	DESCRIPTION
26	P5343026	WOODRUFF KEY
27	P5343027	SPINDLE
28	P5343028	CLAMP NUT
29	P5343029	1/4" COLLET
30	P5343030	COLLET NUT
31	P5343031	THROTTLE VALVE BUSHING
32	P5343032	O-RING
33	P5343033	SPANNER WRENCH
34	P5343034	EXHAUST DEFLECTOR
35	P5343035	AIR INLET
36	P5343036	SPANNER WRENCH
37	P5343037	BALL
38	P5343038	1/8" COLLET
39	P5343039	MOUNTED POINT B42
40	P5343040	MOUNTED POINT B131
41	P5343041	MOUNTED POINT B121
42	P5343042	MOUNTED POINT A25
43	P5343043	MOUNTED POINT B41
44	P5343044	MOUNTED POINT A4
45	P5343045	MOUNTED POINT W218
46	P5343046	MOUNTED POINT B91
47	P5343047	MOUNTED POINT A14
48	P5343048	MOUNTED POINT A12
49	H3177	1/4" MNPT AIR FITTING