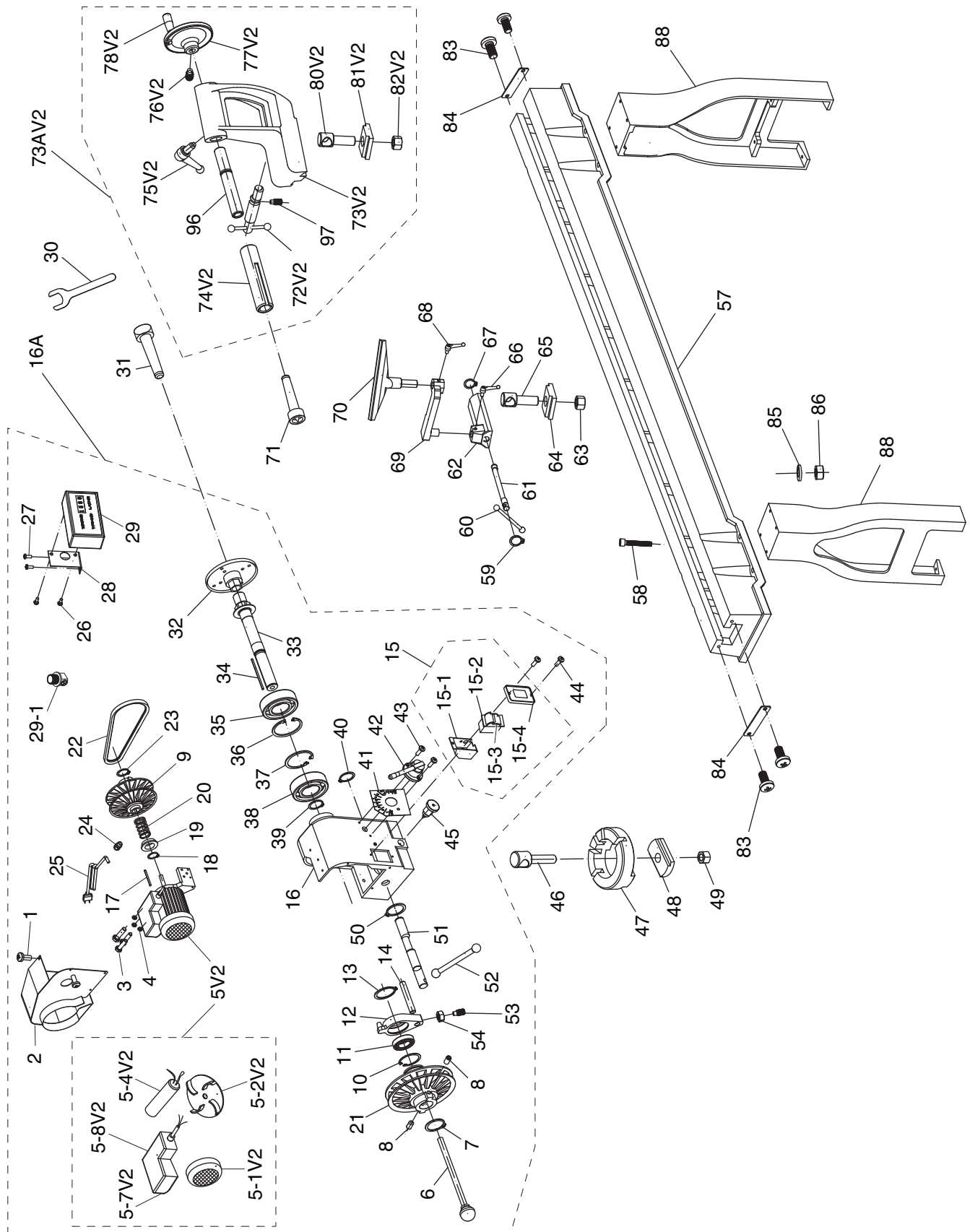


# SECTION 9: PARTS



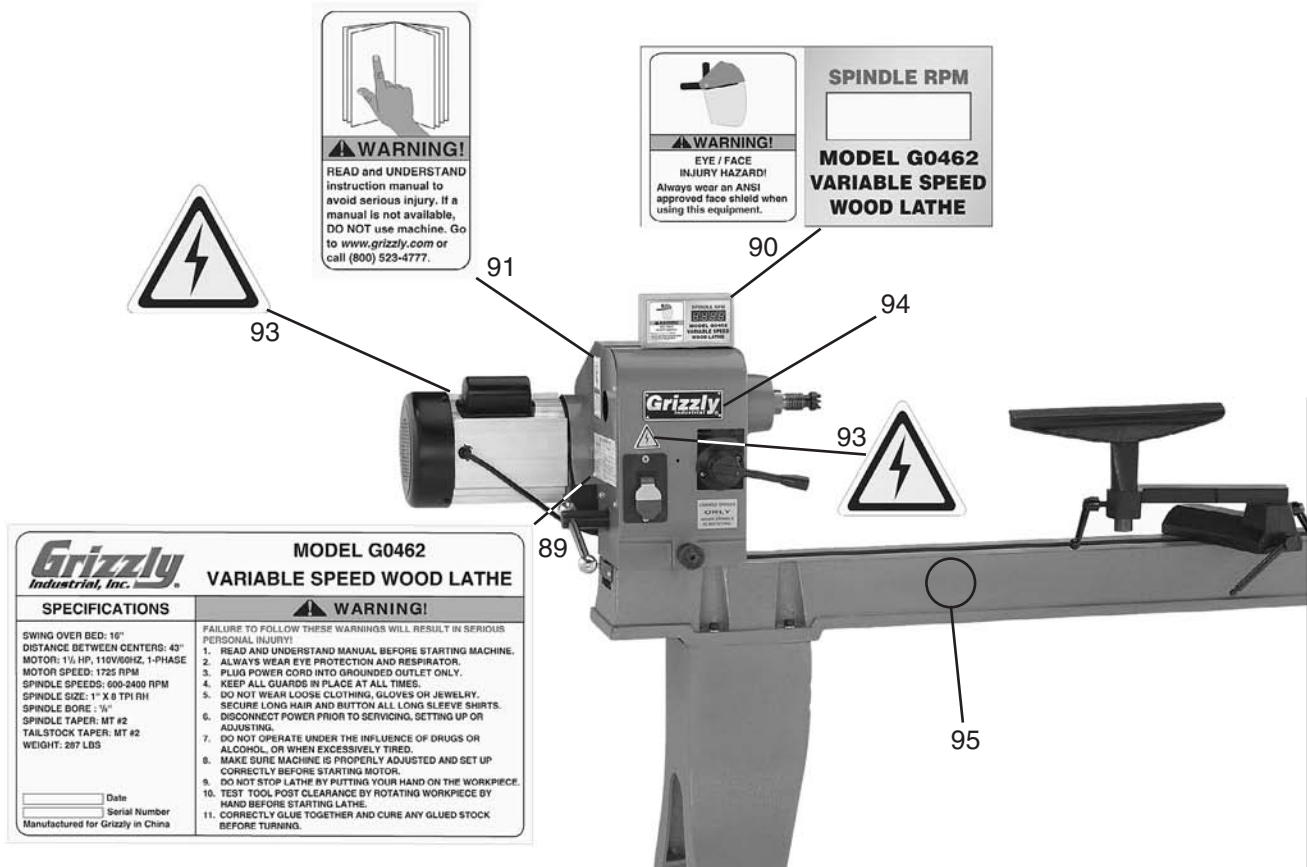
# Parts List

REF	PART #	DESCRIPTION
1	PS05M	PHLP HD SCR M5-.8 X 8
2	P0462002	MOTOR COVER
3	PB26M	HEX BOLT M8-1.25 X 30
4	PLW04M	LOCK WASHER 8MM
5V2	P0462005V2	MOTOR 2HP 110V 60HZ V2.01.09
5-1V2	P0462005-1V2	FAN COVER 156 X 68MM V2.01.09
5-2V2	P0462005-2V2	FAN 150 X 30MM V2.01.09
5-4V2	P0462005-4V2	S CAPACITOR 100M 250V V2.01.09
5-7V2	P0462005-7V2	MOTOR JUNCTION BOX V2.01.09
6	P0584022	KNOCKOUT TOOL
7	PR12M	EXT RETAINING RING 35MM
8	P0584026	CENTER-DRILLED SET SCR M6 X 10
9	P0462009	MOTOR PULLEY SET
10	PR38M	INT RETAINING RING 62MM
11	P6007ZZ	BALL BEARING 6007 ZZ
12	P0584009	SHIFTING LEVER BRACKET
13	PR12M	EXT RETAINING RING 35MM
14	P0462014	RACK
15	P0462015	SWITCH ASSEMBLY
15-1	P0584070	SWITCH BOX
15-2	G8988	GRIZZLY PADDLE SWITCH W/KEY
15-3	PSW09-1	PADDLE SWITCH KEY
15-4	P0584072	SWITCH BOX PLATE
16	P0462016	HEADSTOCK CASTING
16A	P0462016A	HEADSTOCK ASSEMBLY
17	PK93M	KEY 4 X 4 X 80
18	PR06M	EXT RETAINING RING 16MM
19	P0584020	MOTOR SHAFT SLEEVE
20	P0584019	COMPRESSION SPRING
21	P0462021	SPINDLE PULLEY SET
22	PVM24.5	V-BELT M24.5 3L245
23	PR06M	EXT RETAINING RING 16MM
24	P0462024	STRAIN RELIEF M20-1.5
25	P0462025	POWER CORD 16G 3W 5-15 PLUG
26	PS68M	PHLP HD SCR M6-1 X 10
27	PS68M	PHLP HD SCR M6-1 X 10
28	P0462028	DIGITAL READOUT BRACKET
29	P0462029	DIGITAL READOUT ASSEMBLY
29-1	P0462029-1	RPM SENSOR
30	P0584084	FLAT WRENCH 32MM
31	P0584003	SPUR CENTER MT#2
32	P0462032	FACEPLATE 6"
33	P0462033	SPINDLE 1" X 8"
34	PK93M	KEY 4 X 4 X 80
35	P6205ZZ	BALL BEARING 6205ZZ
36	PR26M	INT RETAINING RING 52MM
37	PR26M	INT RETAINING RING 52MM
38	P6205ZZ	BALL BEARING 6205ZZ
39	PR11M	EXT RETAINING RING 25MM

REF	PART #	DESCRIPTION
40	PR58M	EXT RETAINING RING 24MM
41	P0462041	SPEED CHANGE LABEL
42	P0584048	SPEED CONTROL LEVER ASSY
43	PS08M	PHLP HD SCR M5-.8 X 12
44	PS02M	PHLP HD SCR M4-.7 X 12
45	P0584045	HEAD PIVOT LOCKING PIN
46	P0462046	HEADSTOCK PIVOT BOLT
47	P0584037	HEAD PIVOT BASE
48	P0584043	HEAD CLAMP PLATE
49	PN29M	HEX NUT M18-2.5
50	PR58M	EXT RETAINING RING 24MM
51	P0462051	HEADSTOCK ECCENTRIC SHAFT
52	P0462052	HEAD LOCK LEVER
53	PSS21M	SET SCREW M8-1.25 X 25
54	PN03M	HEX NUT M8-1.25
57	P0584038	BED
58	PCAP12M	CAP SCREW M8-1.25 X 40
59	PR08M	EXT RETAINING RING 19MM
60	P0462060	BALL LEVER
61	P0584055	TOOL REST ECCENTRIC SHAFT
62	P0584056	TOOL REST BASE
63	PN29M	HEX NUT M18-2.5
64	P0462064	TOOL REST CLAMP PLATE
65	P0462065	TOOL REST PIVOT BOLT
66	P0584057	LOCK HANDLE ASSY M10-1.5 X 15
67	PR08M	EXT RETAINING RING 19MM
68	P0584057	LOCK HANDLE ASSY M10-1.5 X 15
69	P0584058	TOOL REST PIVOT ARM
70	P0462070	TOOL REST 12-1/8"L X 6-1/2"H
71	P0584061	TAILSTOCK LIVE CENTER MT#2
72V2	G0462072V2	TAILSTOCK LOCK LEVER V2.11.09
73V2	P0462073V2	TAILSTOCK CASTING V2.11.09
73AV2	P0462073AV2	TAILSTOCK ASSEMBLY V2.11.09
74V2	P0462074V2	TAILSTOCK QUILL V2.11.09
75V2	P0462075V2	QUILL LOCK HANDLE ASSY V2.11.09
76V2	P0462076V2	HANDWHEEL SET SCREW V2.11.09
77V2	P0462077V2	TAILSTOCK HANDWHEEL V2.11.09
78V2	P0462078V2	HANDWHEEL HANDLE V2.11.09
80V2	P0462080V2	TAILSTOCK PIVOT BOLT V2.11.09
81V2	P0462081V2	TAILSTOCK CLAMP PLATE V2.11.09
82V2	PN29M	HEX NUT M18-2.5
83	PS08M	PHLP HD SCR M5-.8 X 12
84	P0462084	BED END PLATE
85	PLW04M	LOCK WASHER 8MM
86	PN03M	HEX NUT M8-1.25
88	P0462088	STAND LEG LEFT/RIGHT
96V2	P0462096V2	TAILSTOCK LEADSCREW V2.11.09
97	PSS04M	SET SCREW M6-1 X 12



# Machine Labels



**Grizzly Industrial, Inc.**

**MODEL G0462 VARIABLE SPEED WOOD LATHE**

SPECIFICATIONS	WARNING!
SWING OVER BED: 16" DISTANCE BETWEEN CENTERS: 43" MOTOR: 1/2 HP, 115V/60HZ, 1-PHASE MOTOR SPEED: 1725 RPM SPINDLE SPEEDS: 600-2400 RPM SPINDLE SIZE: 1" X 8 TPI RH SPINDLE BORE: 1/2" SPINDLE TAPER: MT #2 TAILSTOCK TAPER: MT #2 WEIGHT: 287 LBS	FAILURE TO FOLLOW THESE WARNINGS WILL RESULT IN SERIOUS PERSONAL INJURY! 1. READ AND UNDERSTAND MANUAL BEFORE STARTING MACHINE. 2. ALWAYS WEAR EYE PROTECTION AND RESPIRATOR. 3. PLUG POWER CORD INTO GROUNDED OUTLET ONLY. 4. KEEP ALL GUARDS IN PLACE AT ALL TIMES. 5. DO NOT WEAR LOOSE CLOTHING, GLOVES OR JEWELRY. SECURE LONG HAIR AND BUTTON ALL LONG SLEEVE SHIRTS. 6. DISCONNECT POWER PRIOR TO SERVICING, SETTING UP OR ADJUSTING. 7. DO NOT OPERATE UNDER THE INFLUENCE OF DRUGS OR ALCOHOL, OR WHEN EXCESSIVELY TIRED. 8. MAKE SURE MACHINE IS PROPERLY ADJUSTED AND SET UP CORRECTLY BEFORE STARTING MOTOR. 9. DO NOT STOP LATHE BY PUTTING YOUR HAND ON THE WORKPIECE. 10. TEST TOOL POST CLEARANCE BY ROTATING WORKPIECE BY HAND BEFORE STARTING LATHE. 11. CORRECTLY GLUE TOGETHER AND CURE ANY GLUED STOCK BEFORE TURNING.

Date \_\_\_\_\_  
Serial Number \_\_\_\_\_  
Manufactured for Grizzly in China

REF	PART #	DESCRIPTION
89	P0462089	MACHINE ID LABEL
90	P0462090	RPM DISPLAY/FACE SHIELD LABEL
91	PLABEL-12A	READ MANUAL LABEL
92	P0462041	SPEED CHANGE LABEL

REF	PART #	DESCRIPTION
93	PLABEL-14	ELECTRICITY LABEL
94	P0584079	GRIZZLY LOGO LABEL
95	PPAINT-01	GRIZZLY GREEN TOUCH-UP PAINT

## WARNING

Safety labels warn about machine hazards and ways to prevent injury. The owner of this machine **MUST** maintain the original location and readability of the labels on the machine. If any label is removed or becomes unreadable, **REPLACE** that label before using the machine again. Contact Grizzly at (800) 523-4777 or [www.grizzly.com](http://www.grizzly.com) to order new labels.

