

READ THIS FIRST



Model G0495X

IMPORTANT UPDATE

For Machines Mfd. Since 07/24
and Owner's Manual Revised 03/22

For questions or help with this product contact Tech Support at (570) 546-9663 or techsupport@grizzly.com

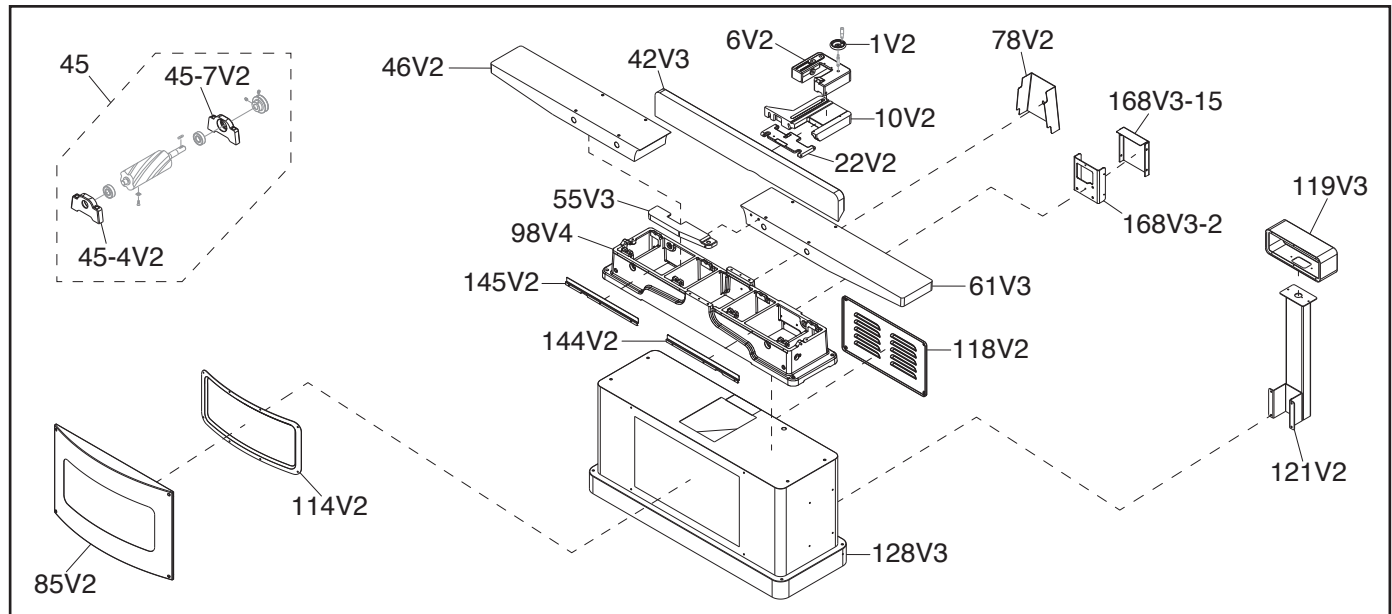
The following changes were recently made since the owner's manual was printed:

- Parts changed.

Aside from this information, all other content in the owner's manual applies and MUST be read and understood for your own safety. **IMPORTANT: Keep this update with the owner's manual for future reference.**

For questions or help, contact our Tech Support at (570) 546-9663 or techsupport@grizzly.com.

Revised Parts



REF	PART #	DESCRIPTION
1V2	P0495X001V2	HANDWHEEL V2.07.24
6V2	P0495X006V2	FENCE BRACKET V2.07.24
10V2	P0495X010V2	TABLE BRACKET V2.07.24
22V2	P0495X022V2	FENCE HINGE V2.07.24
42V3	P0495X042V3	FENCE V3.07.24
45	P0495X045	HELICAL CUTTERHEAD ASSEMBLY
45-4V2	P0495X045-4V2	LEFT BEARING SUPPORT BLOCK V2.07.24
45-7V2	P0495X045-7V2	RIGHT BEARING SUPPORT BLOCK V2.07.24
46V2	P0495X046V2	OUTFEED TABLE V2.07.24
55V3	P0495X055V3	RABBETING TABLE V3.07.24
61V3	P0495X061V3	INFEED TABLE V3.07.24
78V2	P0495X078V2	GUARD COVER V2.07.24

REF	PART #	DESCRIPTION
85V2	P0495X085V2	CAP V2.07.24
98V4	P0495X098V4	BASE V4.07.24
114V2	P0495X114V2	FRONT COVER V2.07.24
118V2	P0495X118V2	REAR ACCESS PLATE V2.07.24
119V3	P0495X119V3	CONTROL PANEL COVER V3.07.24
121V2	P0495X121V2	SWITCH BRACKET ASSEMBLY V2.07.24
128V3	P0495X128V3	STAND V3.07.24
144V2	P0495X144V2	RIGHT DUST PLATE V2.07.24
145V2	P0495X145V2	LEFT DUST PLATE V2.07.24
168V3-2	P0495X168V3-2	DRO PLATE V2.07.24
168V3-15	P0495X168V3-15	COVER V2.07.24



COPYRIGHT © JUNE, 2024 BY GRIZZLY INDUSTRIAL, INC.
WARNING: NO PORTION OF THIS MANUAL MAY BE REPRODUCED IN ANY SHAPE OR FORM WITHOUT THE WRITTEN APPROVAL OF GRIZZLY INDUSTRIAL, INC.
 #KS23272 PRINTED IN TAIWAN

READ THIS FIRST



Model G0495X

IMPORTANT UPDATE

For Machines Mfd. Since 05/24
and Owner's Manual Revised 03/22

For questions or help with this product contact Tech Support at (570) 546-9663 or techsupport@grizzly.com

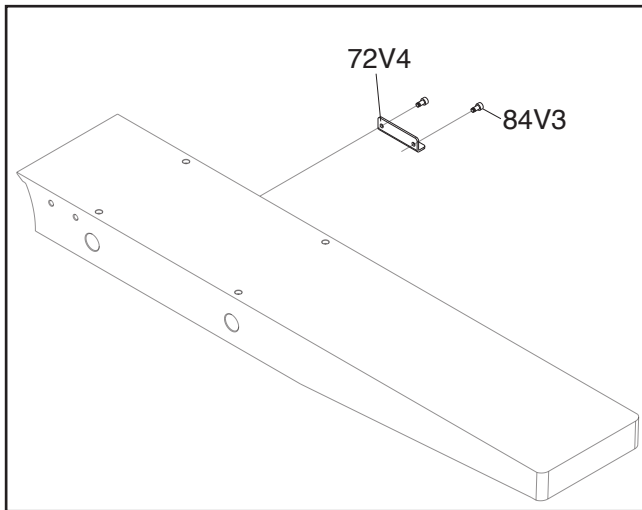
The following changes were recently made since the owner's manual was printed:

- Parts changed.

Aside from this information, all other content in the owner's manual applies and **MUST** be read and understood for your own safety. **IMPORTANT: Keep this update with the owner's manual for future reference.**

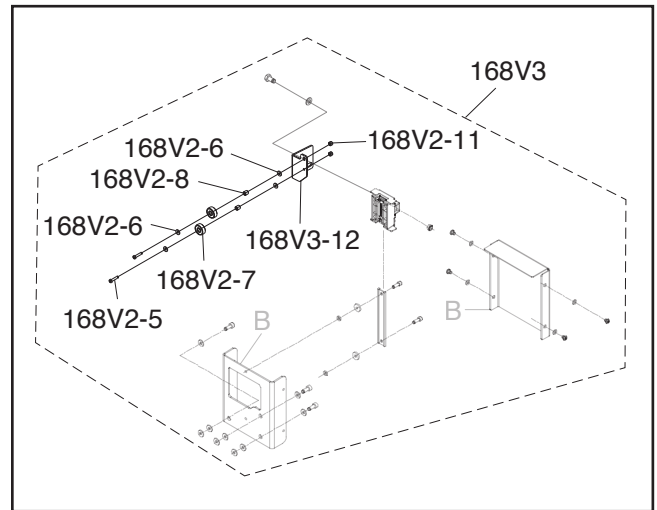
For questions or help, contact our Tech Support at (570) 546-9663 or techsupport@grizzly.com.

Revised Table Parts



REF	PART #	DESCRIPTION
72V4	P0495X072V4	SENSOR MOUNT BLOCK V4.05.24
84V3	P0495X084V3	CAP SCREW M6-1 X 12 V3.05.24

Revised Base Parts



REF	PART #	DESCRIPTION
168V2-5	P0495X168V2-5	BUTTON HD CAP SCR M3-.5 X 15
168V2-6	P0495X168V2-6	FLAT WASHER 3MM
168V2-7	P0495X168V2-7	BALL BEARING 606ZZ
168V2-8	P0495X168V2-8	BUSHING
168V2-11	P0495X168V2-11	LOCK NUT M3-.5
168V3	P0495X168V3	DRO ASSEMBLY V3.05.24
168V3-12	P0495X168V3-12	BALL BEARING HOUSING



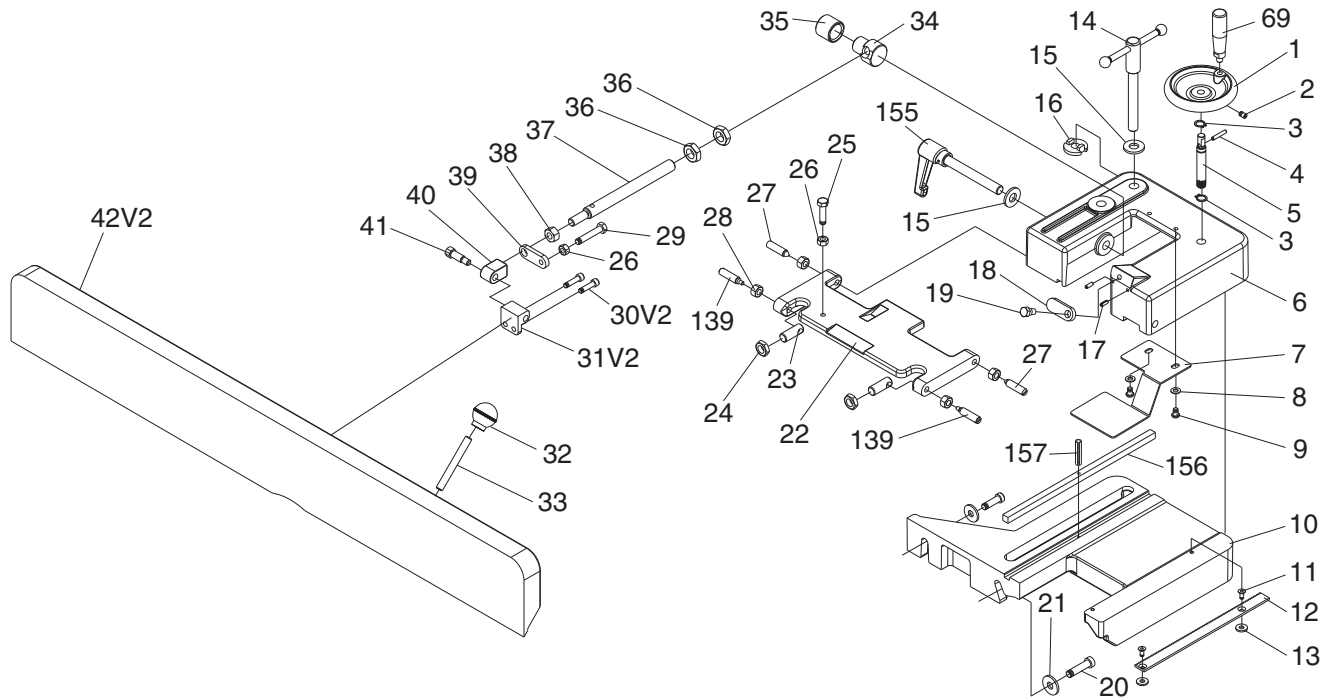
COPYRIGHT © APRIL, 2024 BY GRIZZLY INDUSTRIAL, INC.
**WARNING: NO PORTION OF THIS MANUAL MAY BE REPRODUCED IN ANY SHAPE
OR FORM WITHOUT THE WRITTEN APPROVAL OF GRIZZLY INDUSTRIAL, INC.**

#LW23167 PRINTED IN TAIWAN

SECTION 9: PARTS

We do our best to stock replacement parts when possible, but we cannot guarantee that all parts shown are available for purchase. Call (800) 523-4777 or visit www.grizzly.com/parts to check for availability.

Fence



REF	PART #	DESCRIPTION
1	P0495X001	HANDWHEEL
2	P0495X002	SET SCREW 1/4-20 X 3/8
3	P0495X003	EXT RETAINING RING 15MM
4	P0495X004	ROLL PIN 4 X 25
5	P0495X005	GEAR SHAFT
6	P0495X006	FENCE BRACKET
7	P0495X007	PLATE
8	P0495X008	FLAT WASHER 6MM
9	P0495X009	CAP SCREW 1/4-20 X 3/8
10	P0495X010	TABLE BRACKET
11	P0495X011	FLAT HD SCR M5-.8 X 12
12	P0495X012	BAR
13	P0495X013	FLAT WASHER 6MM
14	P0495X014	LOCKING HANDLE ASSEMBLY
15	P0495X015	FENDER WASHER 13MM
16	P0495X016	FENCE LOCK NUT
17	P0495X017	ROLL PIN 4 X 12
18	P0495X018	STOP BLOCK
19	P0495X019	SPECIAL BOLT 5/16-18 X 3/8
20	P0495X020	CAP SCREW 3/8-16 X 1-1/4
21	P0495X021	FLAT WASHER 10MM
22	P0495X022	FENCE HINGE
23	P0495X023	SPECIAL BOLT
24	P0495X024	HEX NUT 1/2-20

REF	PART #	DESCRIPTION
25	P0495X025	HEX BOLT 5/16-18 X 1-1/4
26	P0495X026	HEX NUT 5/16-18
27	P0495X027	SPECIAL BOLT
28	P0495X028	HEX NUT 3/8-16
29	P0495X029	HEX BOLT 5/16-18 X 1-3/4
30V2	P0495X030V2	CAP SCREW 1/4-20 X 3/4 V2.06.22
31V2	P0495X031V2	BRACKET V2.06.22
32	P0495X032	HANDLE
33	P0495X033	SHAFT
34	P0495X034	PIVOT NUT
35	P0495X035	COLLAR
36	P0495X036	HEX NUT 5/16-18
37	P0495X037	ROD
38	P0495X038	HEX NUT 7/16-14
39	P0495X039	STOP TAB
40	P0495X040	ADAPTER
41	P0495X041	ADAPTER SCREW
42V2	P0495X042V2	FENCE V2.06.22
69	P0495X069	FENCE ADJUSTMENT WHEEL HANDLE
139	P0495X139	BOLT
155	P0495X155	TILT LOCK
156	P0495X156	KEY 9.5 X 9.5 X 268
157	P0495X157	ROLL PIN 4 x 14



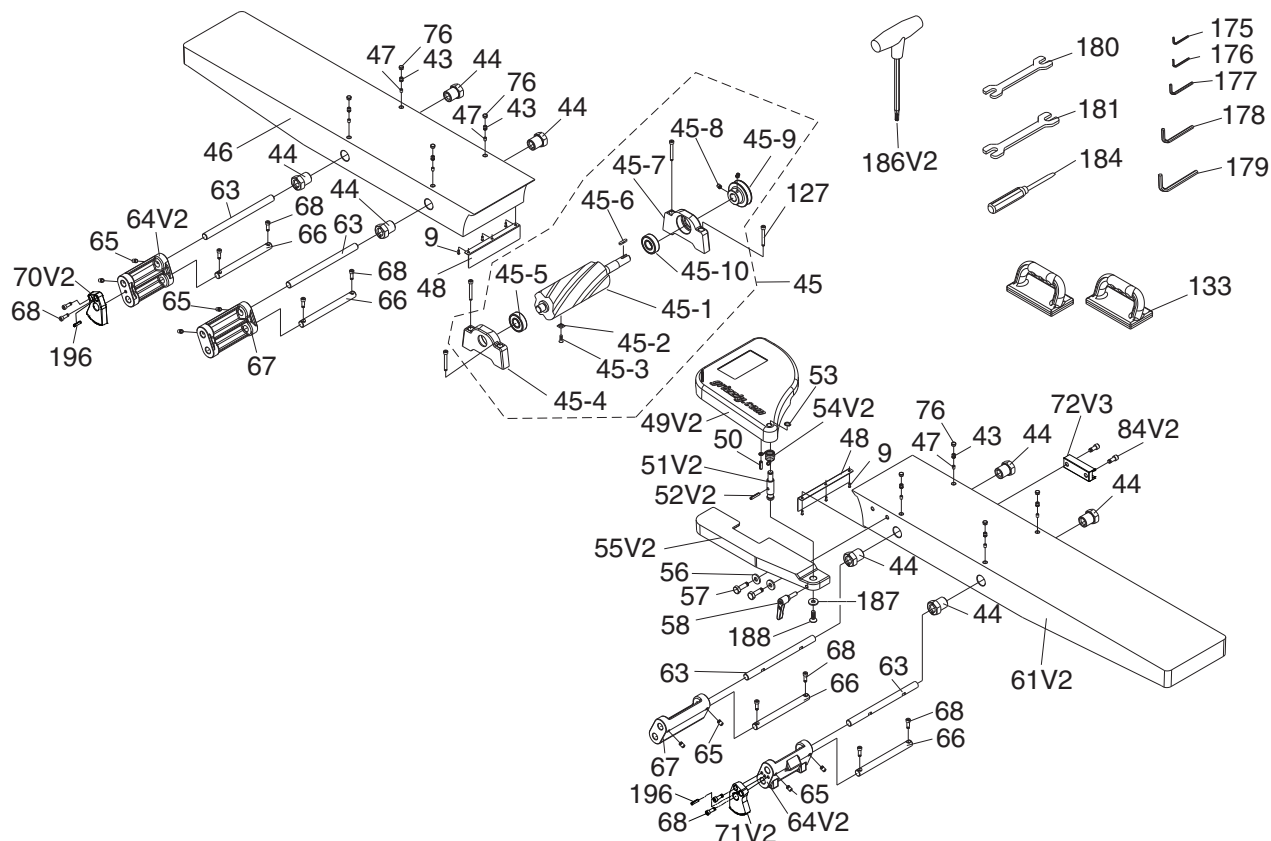
Base Parts List

REF	PART #	DESCRIPTION
4	P0495X004	ROLL PIN 4 X 25
26	P0495X026	HEX NUT 5/16-18
77	P0495X077	KNOB
78	P0495X078	GUARD COVER
79	P0495X079	DOUBLE-END STUD
81	P0495X081	BALL BEARING 6000ZZ
82	P0495X082	PINION GEAR
83V2	P0495X083V2	SHAFT V2.08.20
87	P0495X087	HEX BOLT 5/16-18 X 1-3/4
88	P0495X088	HEX BOLT 5/16-18 X 1
89	P0495X089	HEX BOLT 3/8-16 X 2
90	P0495X090	FLAT WASHER 10MM
91V2	P0495X091V2	LIFTING ROD V2.08.20
92	P0495X092	KNOB M4-.7, D46, 7-LOBE
93	P0495X093	HANDWHEEL ASSEMBLY
94	P0495X094	BALL BEARING 6002ZZ
95	P0495X095	KEY 5 X 5 X 10
96V2	P0495X096V2	SPIRAL GEAR SHAFT V2.08.20
98V3	P0495X098V3	BASE V3.08.20
100	P0495X100	FLAT WASHER 5MM
140	P0495X140	BUSHING
144	P0495X144	RIGHT DUST PLATE
145	P0495X145	LEFT DUST PLATE
154	P0495X154	PHLP HD SCR 10-24 X 1/4
158	P0495X158	POINTER
164	P0495X164	FLAT WASHER 6MM
165	P0495X165	FLAT WASHER 5MM
166	P0495X166	CAP SCREW 10-24 X 1/2

REF	PART #	DESCRIPTION
167	P0495X167	FLAT WASHER 8MM
168V2	P0495X168V2	DRO REPLACEMENT KIT V2.02.19
168V2-1	P0495X168V2-1	FLAT WASHER 8MM
168V2-2	P0495X168V2-2	DRO PLATE
168V2-3	P0495X168V2-3	FLAT WASHER 8MM
168V2-4	P0495X168V2-4	CAP SCREW 5/16-18 X 3/4
168V2-5	P0495X168V2-5	BUTTON HD CAP SCR M3-.5 X 15
168V2-6	P0495X168V2-6	FLAT WASHER 3MM
168V2-7	P0495X168V2-7	BALL BEARING 606ZZ
168V2-8	P0495X168V2-8	BUSHING
168V2-9	P0495X168V2-9	HEX BOLT M6-1 X 12
168V2-10	P0495X168V2-10	FLAT WASHER 6MM
168V2-11	P0495X168V2-11	LOCK NUT M3-.5
168V2-12	P0495X168V2-12	BALL BEARING HOUSING
168V2-13	P0495X168V2-13	DIGITAL READOUT
168V2-14	P0495X168V2-14	LOCK NUT M6-1
168V2-15	P0495X168V2-15	COVER
168V2-16	P0495X168V2-16	FLAT WASHER 5MM
168V2-17	P0495X168V2-17	PHLP HD SCR M5-.8 X 8
168V2-18	P0495X168V2-18	CAP SCREW M5-.8 X 12
168V2-19	P0495X168V2-19	MAGNETIC SCALE
168V2-20	P0495X168V2-20	FLAT WASHER 5MM
168V2-21	P0495X168V2-21	FLAT WASHER 5MM
169	P0495X169	CAP SCREW M8-1.25 X 12
170	P0495X170	PHLP HD SCR M4-.7 X 6
171	P0495X171	DIAL
174	P0495X174	BUTTON HD CAP SCR M6-1 X 16
197	P0495X197	EXT RETAINING RING 16MM



Table

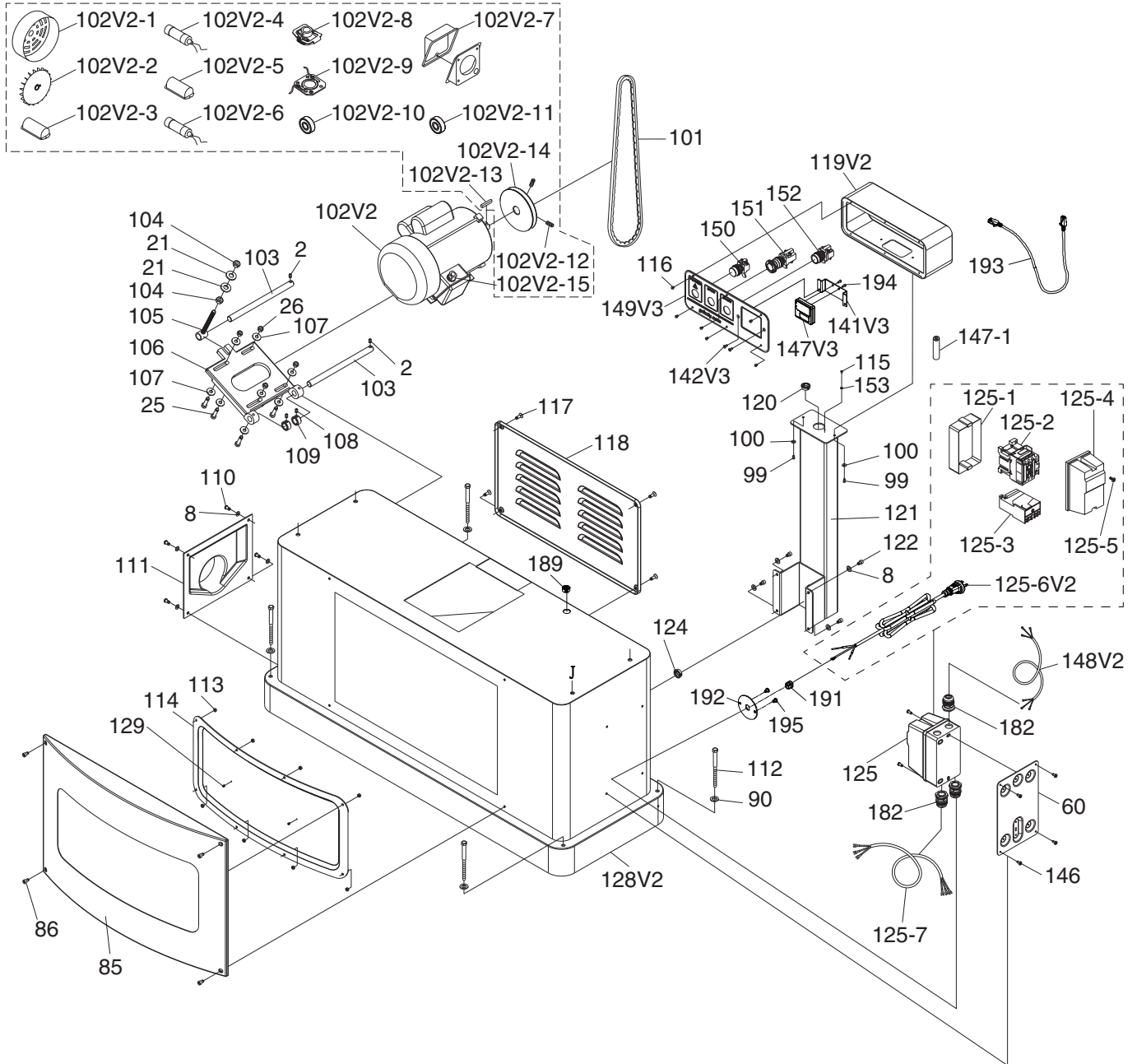


REF	PART #	DESCRIPTION
9	P0495X009	CAP SCREW 1/4-20 X 3/8
43	P0495X043	SET SCREW 5/16-18 X 3/8
44	P0495X044	ECCENTRIC BUSHING
45	P0495X045	HELICAL CUTTERHEAD ASSEMBLY
45-1	P0495X045-1	HELICAL CUTTERHEAD 8"
45-2	P0495X045-2	CARBIDE INSERT 15 X 15 X 2.5
45-3	P0495X045-3	FLAT HD TORX SCR #10-32 X 1/2
45-4	P0495X045-4	LEFT BEARING SUPPORT BLOCK
45-5	P0495X045-5	BALL BEARING 6203ZZ
45-6	P0495X045-6	KEY 5 X 5 X 30
45-7	P0495X045-7	RIGHT BEARING SUPPORT BLOCK
45-8	P0495X045-8	SET SCREW M4-.7 X 10
45-9	P0495X045-9	CUTTERHEAD PULLEY
45-10	P0495X045-10	BALL BEARING 6203ZZ
46	P0495X046	OUTFEED TABLE
47	P0495X047	BUSHING
48	P0495X048	CHIP BREAKER
49V2	P0495X049V2	BLADE GUARD V2.07.19
50	P0495X050	ROLL PIN 6 X 28
51V2	P0495X051V2	SHAFT V2.06.19
52V2	P0495X052V2	ROLL PIN 5 X 26 V2.06.19
53	P0495X053	EXT RETAINING RING 11MM
54V2	P0495X054V2	TORSION SPRING V2.06.19
55V2	P0495X055V2	RABBETING TABLE V2.07.19
56	P0495X056	FLAT WASHER 10MM
57	P0495X057	HEX BOLT 3/8-16 X 1-1/4
58	P0495X058	ADJUSTABLE HANDLE 5/16-18 x 1", 1-1/2"L

REF	PART #	DESCRIPTION
61V2	P0495X061V2	INFEED TABLE V2.02.19
63	P0495X063	SHAFT
64V2	P0495X064V2	BRACKET V2.02.19
65	P0495X065	SET SCREW 5/16-18 X 1/2
66	P0495X066	ROD SHAFT
67	P0495X067	ROD BRACKET
68	P0495X068	CAP SCREW 1/4-20 X 3/4
70V2	P0495X070V2	LEFT ELEVATE BRACKET V2.02.19
71V2	P0495X071V2	RIGHT ELEVATE BRACKET V2.02.19
72V3	P0495X072V3	SENSOR MOUNT BLOCK V3.02.19
76	P0495X076	SCREW COVER
84V2	P0495X084V2	CAP SCREW M6-1 X 20 V2.02.19
127	P0495X127	CAP SCREW 5/16-18 X 1-3/4
133	P0495X133	PUSH BLOCK
175	P0495X175	HEX WRENCH 3MM
176	P0495X176	HEX WRENCH 4MM
177	P0495X177	HEX WRENCH 5MM
178	P0495X178	HEX WRENCH 6MM
179	P0495X179	HEX WRENCH 8MM
180	P0495X180	WRENCH 12 X 14
181	P0495X181	WRENCH 14 X 17
184	P0495X184	PHILLIPS SCREWDRIVER #1
186V2	P0495X186V2	T-HANDLE T-25 TORX DRIVER V2.06.11
187	P0495X187	FLAT WASHER 6MM
188	P0495X188	BUTTON HD CAP SCR M6-1 X 12
196	P0495X196	ROLL PIN 4 X 10



Stand



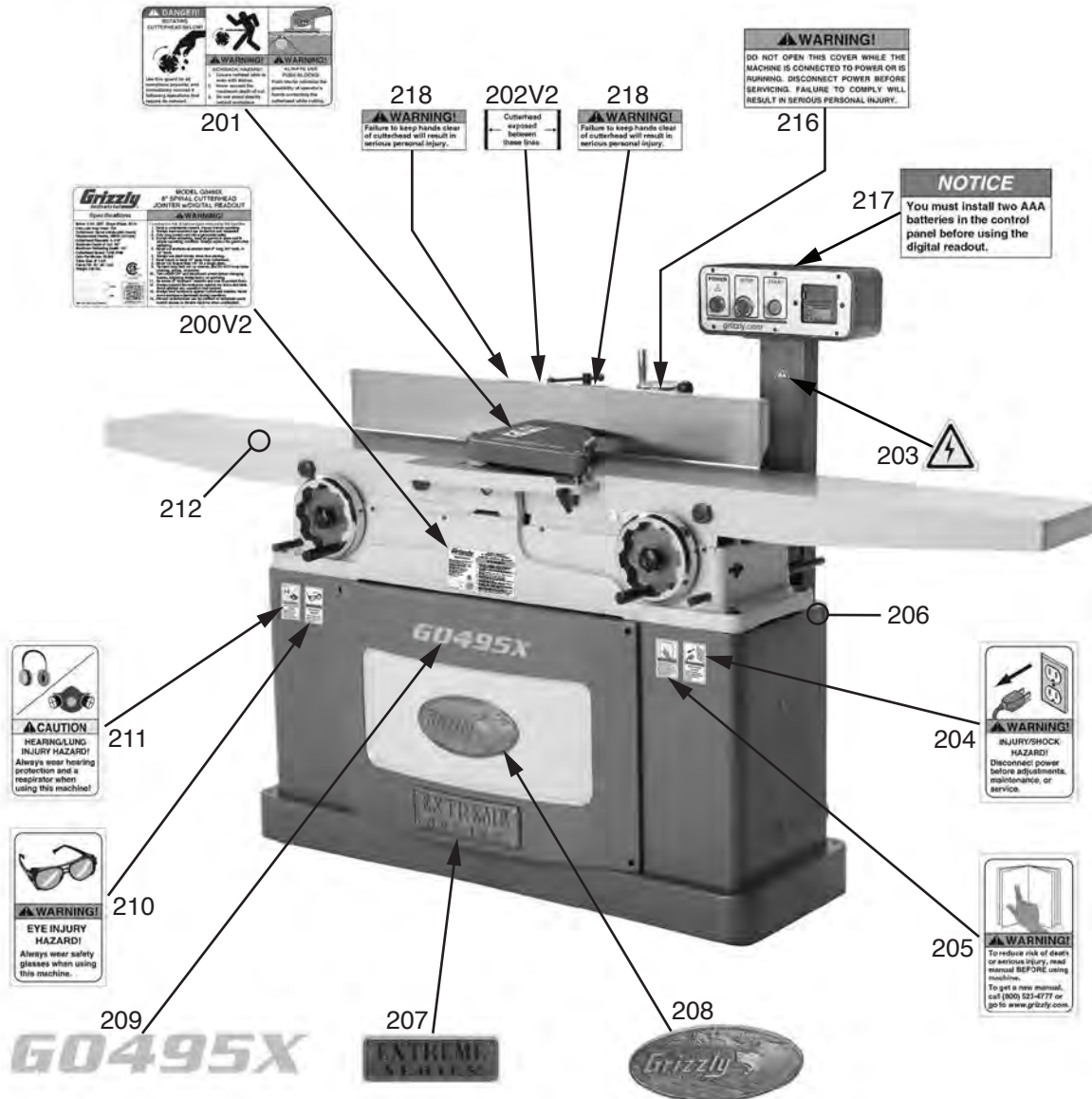
Stand Parts List

REF	PART #	DESCRIPTION
2	P0495X002	SET SCREW 1/4-20 X 3/8
8	P0495X008	FLAT WASHER 6MM
21	P0495X021	FLAT WASHER 10MM
25	P0495X025	HEX BOLT 5/16-18 X 1-1/4
26	P0495X026	HEX NUT 5/16-18
60	P0495X060	SWITCH PLATE
85	P0495X085	CAP
86	P0495X086	CAP SCREW M6-1 X 10
90	P0495X090	FLAT WASHER 10MM
99	P0495X099	CAP SCREW M5-.8 X 8
100	P0495X100	FLAT WASHER 5MM
101	P0495X101	V-BELT A-51
102V2	P0495X102V2	MOTOR 3HP 230V 1-PH V2.02.19
102V2-1	P0495X102V2-1	MOTOR FAN COVER
102V2-2	P0495X102V2-2	MOTOR FAN
102V2-3	P0495X102V2-3	S CAPACITOR COVER
102V2-4	P0495X102V2-4	S CAPACITOR 400M 125V 1-1/2 X 3-1/2
102V2-5	P0495X102V2-5	R CAPACITOR COVER
102V2-6	P0495X102V2-6	R CAPACITOR 70M 250V 1-1/2 X 3-1/2
102V2-7	P0495X102V2-7	JUNCTION BOX
102V2-8	P0495X102V2-8	CENTRIFUGAL SWITCH
102V2-9	P0495X102V2-9	CONTACT PLATE
102V2-10	P0495X102V2-10	BALL BEARING 6205ZZ (FRONT)
102V2-11	P0495X102V2-11	BALL BEARING 6203ZZ (REAR)
102V2-12	P0495X102V2-12	SET SCREW 1/4-20 X 3/8
102V2-13	P0495X102V2-13	KEY 5 X 5 X 30
102V2-14	P0495X102V2-14	MOTOR PULLEY
102V2-15	P0495X102V2-15	STRAIN RELIEF PGA 13.5-11B
103	P0495X103	SHAFT
104	P0495X104	HEX NUT M10-1.5
105	P0495X105	ADJUSTING SHAFT
106	P0495X106	MOTOR PLATE
107	P0495X107	FLAT WASHER 8MM
108	P0495X108	SET SCREW M6-1 X 8
109	P0495X109	COLLAR
110	P0495X110	PHLP HD SCREW 1/4-20 X 1/2
111	P0495X111	DUST CHUTE
112	P0495X112	HEX BOLT 3/8-16 X 6
113	P0495X113	HEX NUT M5-.8

REF	PART #	DESCRIPTION
114	P0495X114	FRONT COVER
115	P0495X115	PHLP HD SCR M4-.7 X 8
116	P0495X116	BUTTON HD CAP SCR M4-.7 X 12
117	P0495X117	FLAT HD SCR 1/4-20 X 3/4
118	P0495X118	REAR ACCESS PLATE
119V2	P0495X119V2	CONTROL PANEL COVER V2.02.19
120	P0495X120	STRAIN RELIEF NB-2430
121	P0495X121	SWITCH BRACKET ASSEMBLY
122	P0495X122	CAP SCREW 1/4-20 X 1/2
124	P0495X124	STRAIN RELIEF NB-1722
125	P0495X125	MAG SWITCH ASSY SDE
125-1	P0495X125-1	MAG SWITCH BACK COVER
125-2	P0495X125-2	CONTACTOR SDE MA-18 220V
125-3	P0495X125-3	OL RELAY SDE RA-20 12-18A
125-4	P0495X125-4	MAG SWITCH FRONT COVER
125-5	P0495X125-5	NYLON SCREW M10-1.5 X 22
125-6V2	P0495X125-6V2	POWER CORD 14G 3W 10' 6-20P V2.02.19
125-7	P0495X125-7	CONTROL PANEL CORD 16AWG X 5C
128V2	P0495X128V2	STAND V2.02.19
129	P0495X129	PHLP HD SCR M4-.7 X 8
141V3	P0495X141V3	DIGITAL READOUT BRACKET V3.02.19
142V3	P0495X142V3	CAP SCREW M5-.8 X 8 V3.02.19
146	P0495X146	PHLP HD SCR M5-.8 X 8
147V3	P0495X147V3	DIGITAL READOUT ASSEMBLY V3.02.19
147-1	P0495X147-1	BATTERY AAA
148V2	P0495X148V2	MOTOR CORD 14G 3W 72" V2.02.19
149V3	P0495X149V3	SWITCH PLATE V3.02.19
150	P0495X150	LIGHT 250V 1.2W JG18
151	P0495X151	STOP SWITCH
152	P0495X152	START SWITCH
153	P0495X153	EXT TOOTH WASHER 4MM
182	P0495X182	STRAIN RELIEF 1/2"
189	P0495X189	STRAIN RELIEF 1/2"-3/4" SNAP-IN ST
191	P0495X191	STRAIN RELIEF 1/2"-3/4" SNAP-IN ST
192	P0495X192	BACKING BOARD
193	P0495X193	DRO CORD
194	P0495X194	PHLP HD SCR M3-.5 X 8
195	P0495X195	PHLP HD SCR M6-1 X 8



Labels & Cosmetics



REF	PART #	DESCRIPTION
200V2	P0495X200V2	MACHINE ID LABEL V2.02.19
201	P0495X201	CUTTERHEAD GUARD LABEL
202V2	P0495X202V2	FENCE/CUTTERHEAD LABEL V2.06.22
203	P0495X203	ELECTRICITY LABEL
204	P0495X204	DISCONNECT POWER LABEL
205	P0495X205	READ MANUAL LABEL
206	P0495X206	TOUCH-UP PAINT, GRIZZLY GREEN
207	P0495X207	EXTREME SERIES PLATE

REF	PART #	DESCRIPTION
208	P0495X208	GRIZZLY NAMEPLATE-LARGE
209	P0495X209	MODEL NUMBER LABEL
210	P0495X210	SAFETY GLASSES LABEL
211	P0495X211	HEARING/RESPIRATOR LABEL
212	P0495X212	TOUCH-UP PAINT, GRIZZLY PUTTY
216	P0495X216	DO NOT OPEN COVER LABEL
217	P0495X217	BATTERY INSTALL LABEL
218	P0495X218	CUTTERHEAD WARNING LABEL

! WARNING

Safety labels help reduce the risk of serious injury caused by machine hazards. If any label comes off or becomes unreadable, the owner of this machine **MUST** replace it in the original location before resuming operations. For replacements, contact (800) 523-4777 or www.grizzly.com.

