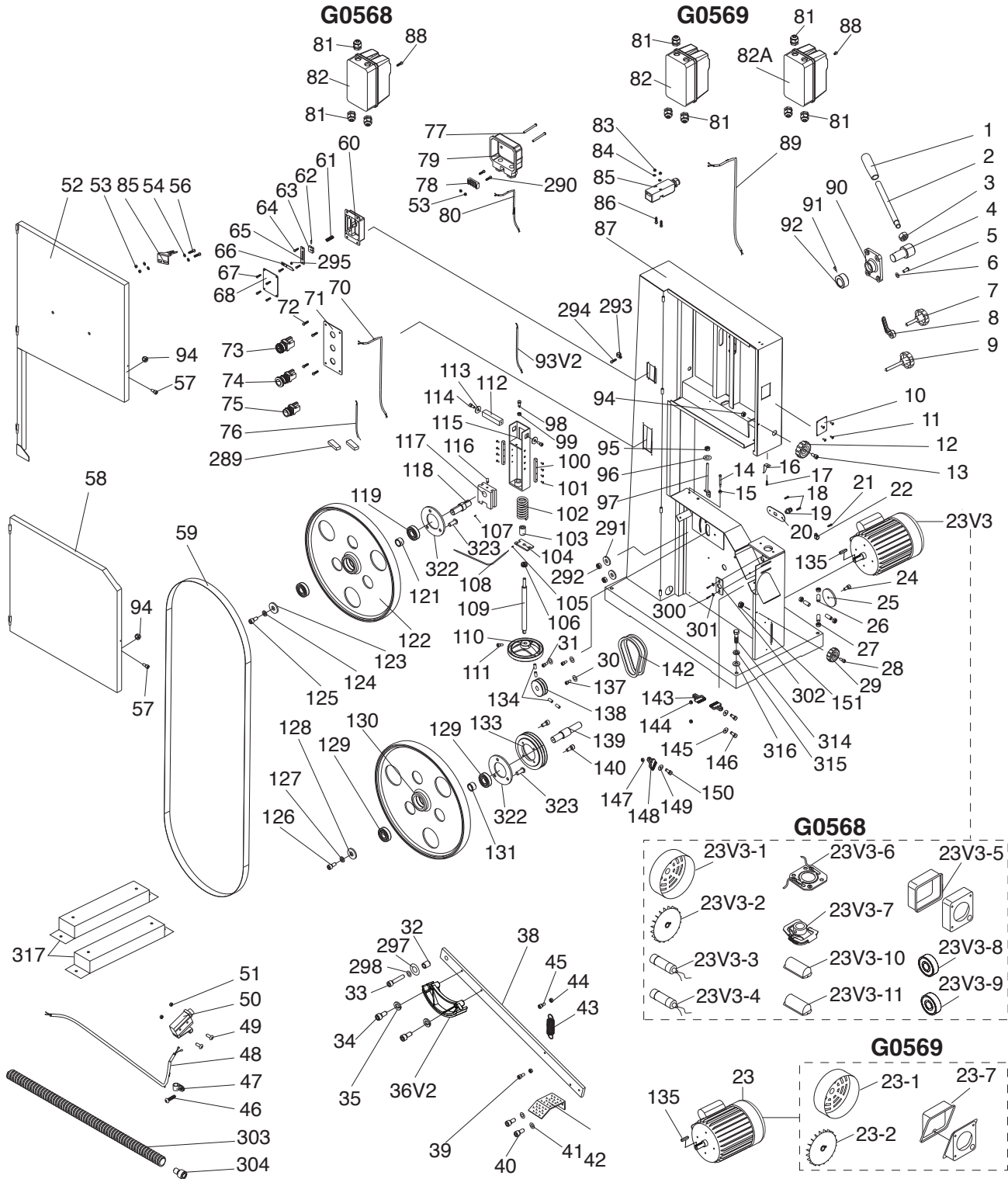


SECTION 9: PARTS

Main



Main Parts List

REF	PART #	DESCRIPTION
1	P0568001	HANDLE SLEEVE
2	P0568002	HANDLE SHAFT 470MM M16-2
3	P0568003	HEX NUT M16-1.5
4	P0568004	ECCENTRIC SHAFT
5	P0568005	BUTTON HD CAP SCR M8-1.25 X 16
6	P0568006	LOCK WASHER 10MM
7	P0568007	KNOB BOLT M10-1.5 X 55, 6-LOBE, D62
8	P0568008	LOCK HANDLE M10-1.5
9	P0568009	KNOB BOLT M10-1.5 X 25, 6-LOBE, D62
10	P0568010	PLEXIGLASS WINDOW
11	P0568011	RIVET 3.2 X 10
12	P0568012	KNOB 6MM, D60, 10-LOBE
13	P0568013	CAP SCREW M6-1 X 20
14	P0568014	HEX BOLT M10-1.5 X 50
15	P0568015	HEX NUT M10-1.5
16	P0568016	HEIGHT POINTER
17	P0568017	FLANGE SCREW M5-.8 X 10
18	P0568018	TAP SCREW M4 X 10
19	P0568019	STRAIN RELIEF M20 TYPE-6 ST
20	P0568020	STRAIN RELIEF PLATE
21	P0568021	TAP SCREW M4 X 8
22	P0568022	CORD CLAMP 1/2"
23V3	P0568023V3	MOTOR 5HP 220V 1-PH V3.07.13 (G0568)
23V3-1	P0568023V3-1	FAN COVER
23V3-2	P0568023V3-2	FAN
23V3-3	P0568023V3-3	S CAPACITOR 300M 250V 1-3/4 X 3-13/16
23V3-4	P0568023V3-4	R CAPACITOR 45M 450V 2 X 4-3/8
23V3-5	P0568023V3-5	MOTOR JUNCTION BOX
23V3-6	P0568023V3-6	CONTACT PLATE
23V3-7	P0568023V3-7	CENTRIFUGAL SWITCH
23V3-8	P0568023V3-8	BALL BEARING 6206-2RS
23V3-9	P0568023V3-9	BALL BEARING 6204-2RS
23V3-10	P0568023V3-10	S CAPACITOR COVER
23V3-11	P0568023V3-11	R CAPACITOR COVER
23	P0569023	MOTOR 7-1/2HP 220/440V 3-PH (G0569)
23-1	P0569023	FAN COVER
23-2	P0569023	FAN
23-7	P0569023	MOTOR JUNCTION BOX
24	P0568024	BUTTON HD CAP SCR M8-1.25 X 20
25	P0568025	COVER
26	P0568026	HEX BOLT M10-1.5 X 30
27	P0568027	HEX NUT M10-1.5
28	P0568028	CAP SCREW M6-1 X 20
29	P0568029	LATCH KNOB 6MM
30	P0568030	FLAT WASHER 8MM
31	P0568031	CAP SCREW M8-1.25 X 25
32	P0568032	BUSHING
33	P0568033	CAP SCREW M8-1.25 X 25
34	P0568034	CAP SCREW M6-1 X 25
35	P0568035	LOCK WASHER 4MM
36V2	P0568036V2	BRAKE PAD V2.06.25
38	P0568038	BRAKE LEVER
40	P0568040	CAP SCREW M6-1 X 16

REF	PART #	DESCRIPTION
41	P0568041	LOCK WASHER 6MM
42	P0568042	BRAKE PEDAL
43	P0568043	EXTENSION SPRING 1.6 X 40 X 63
44	P0568044	HEX NUT M6-1
45	P0568045	CAP SCREW M6-1 X 16
46	P0568046	TAP SCREW M4 X 8
47	P0568047	CORD CLAMP 5/8"
48	P0568048	STEP CORD
49	P0568049	HEX BOLT M4-.7 X 30
50	P0568050	LIMIT SWITCH CANLIE KL7141
51	P0568051	HEX NUT M4-.7
52	P0568052	UPPER WHEEL COVER
53	P0568053	HEX NUT M4-.7
54	P0568054	FLAT WASHER 4MM
56	P0568056	PHLP HD SCR M4-.7 X 10
57	P0568057	PHLP HD SCR M6-1 X 10
58	P0568058	LOWER WHEEL COVER
59	P0568059	SAW BLADE 181 X 1 X .035 HOOK
60	P0568060	TENSION SCALE BRACKET
61	P0568061	COMPRESSION SPRING 1 X 8 X 40
62	P0568062	ROLL PIN 3 X 12
63	P0568063	MOVING PLATE
64	P0568064	TAP SCREW M4 X 10
65	P0568065	FIXED PLATE
66	P0568066	TENSION POINTER
67	P0568067	TAP SCREW M4 X 16
68	P0568068	TENSION SCALE
70	P0568070	SWITCH CORD 16G 3W 36"
71	P0568071	SWITCH PLATE
72	P0568072	TAP SCREW M4 X 10
73	P0568073	KEYED POWER SWITCH YK 22-1A1BG
74	P0568074	E-STOP BUTTON 250V 10A
75	P0568075	ON BUTTON YK 22-1A1B
76	P0568076	CONNECTING CORD
77	P0568077	FLANGE SCREW M5-.8 X 50
78	P0568078	TERMINAL BLOCK
79	P0568079	TERMINAL BLOCK COVER
80	P0568080	POWER CORD
81	P0568081	STRAIN RELIEF TYPE-3 M20-1.5
82	P0568082	MAG SWITCH 5HP 220/240V MPE-18 (G0668)
82	P0569082	MAG SWITCH 220V 20A (G0569)
82A	P0569082A	MAG SWITCH 440V 12A (G0569)
83	P0568083	HEX NUT M4-.7
84	P0568084	FLAT WASHER 4MM
85	P0568085	LIMIT SWITCH CANLIE AZDS11
86	P0568086	FLANGE SCREW M4-.7 X 35
87	P0568087	MACHINE BODY
88	P0568088	FLANGE SCREW M5-.8 X 10
89	P0568089	LIMIT SWITCH CORD 18G 2W 60"
90	P0568090	HOUSING PLATE
91	P0568091	CAP SCREW M8-1.25 X 25
92	P0568092	CAM
93V2	P0568093V2	MOTOR CORD 12G 4W V2.11.11



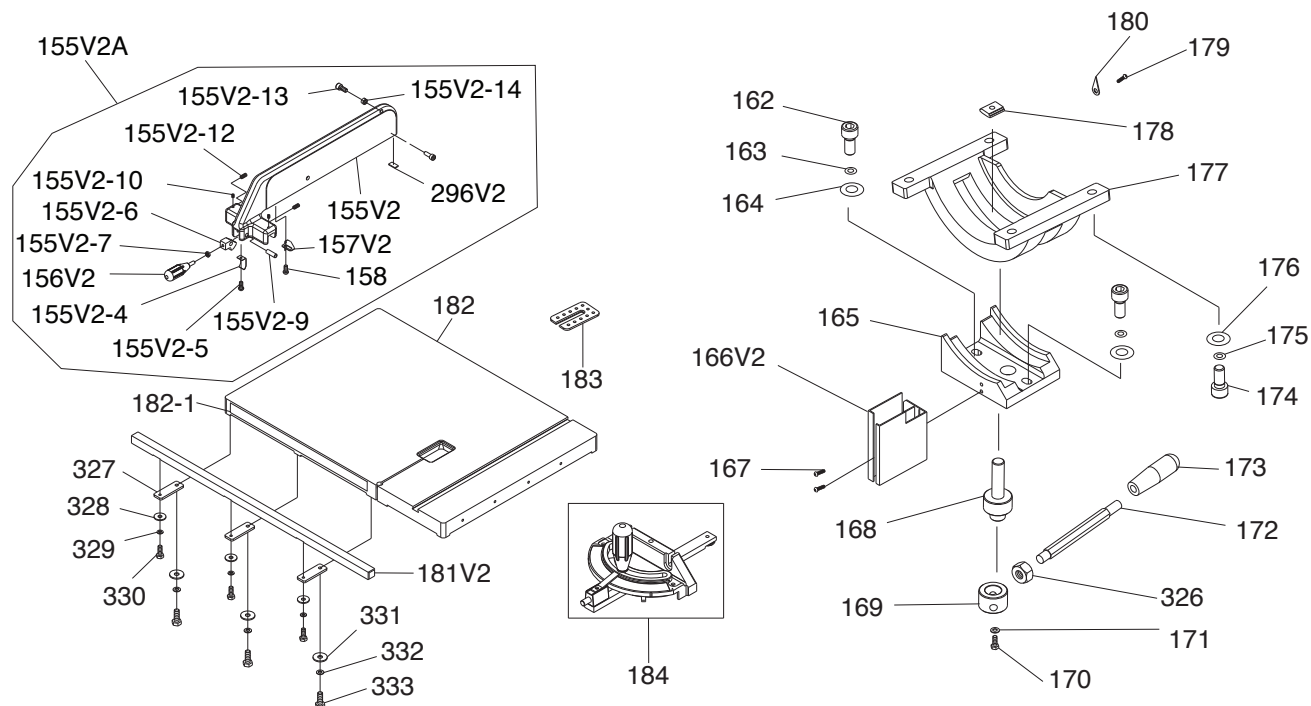
Main Parts List (Cont.)

REF	PART #	DESCRIPTION
94	P0568094	LOCK NUT M6-1
95	P0568095	HEX NUT M10-1.5
96	P0568096	FLAT WASHER 10MM
97	P0568097	ADJUST BOLT
98	P0568098	HEX BOLT M8-1.25 X 30
99	P0568099	HEX NUT M8-1.25
100	P0568100	LOCATE PLATE
101	P0568101	FLAT HD SCR M5-.8 X 16
102	P0568102	COMPRESSION SPRING 12 X 4 X 70
103	P0568103	BUSHING
104	P0568104	PRESS BLOCK
105	P0568105	SET SCREW M5-.8 X 5
106	P0568106	THRUST BEARING 51201
107	P0568107	SET SCREW M5-.8 X 5
108	P0568108	TENSION LINE
109	P0568109	HANDWHEEL SHAFT
110	P0568110	HANDWHEEL TYPE-35 178D X 14B-S
111	P0568111	CAP SCREW M6-1 X 25
112	P0568112	SQUARE SHAFT
113	P0568113	FLAT WASHER 8MM
114	P0568114	CAP SCREW M8-1.25 X 25
115	P0568115	UPPER WHEEL HINGE ASSY
116	P0568116	SET SCREW M10-1.5 X 16
117	P0568117	GUIDE BLOCK
118	P0568118	UPPER WHEEL SHAFT
119	P0568119	BALL BEARING 6306-2RS
121	P0568121	BUSHING
122	P0568122	UPPER WHEEL 25"
123	P0568123	FLAT WASHER 8MM
124	P0568124	LOCK WASHER 8MM
125	P0568125	CAP SCREW M8-1.25 X 20
126	P0568126	CAP SCREW M8-1.25 X 20
127	P0568127	LOCK WASHER 8MM
128	P0568128	FLAT WASHER 8MM
129	P0568129	BALL BEARING 6306-2RS
130	P0568130	LOWER WHEEL 25"
131	P0568131	BUSHING

REF	PART #	DESCRIPTION
133	P0568133	WHEEL PULLEY
134	P0568134	SET SCREW M8-1.25 X 8
135	P0568135	KEY 8 X 7 X 30
137	P0568137	CAP SCREW M8-1.25 X 20
138	P0568138	PULLEY
139	P0568139	LOWER WHEEL SHAFT
140	P0568140	BUTTON HD CAP SCR M8-1.25 X 20
142	P0568142	V-BELT 17-340
143	P0568143	WHEEL BRUSH
144	P0568144	LOCK NUT M6-1
145	P0568145	FLAT WASHER 6MM
146	P0568146	CAP SCREW M6-1 X 20
147	P0568147	LOCK NUT M6-1
148	P0568148	FLAT WASHER 8MM
149	P0568149	FLAT WASHER 6MM
150	P0568150	CAP SCREW M6-1 X 20
151	P0568151	LOCK NUT M6-1
289	P0568289	CORD CONNECTOR 224-201
290	P0568290	PHLP HD SCR M4-.7 X 20
291	P0568291	FLAT WASHER 8MM
292	P0568292	HEX NUT M8-1.25
293	P0568293	CORD CLAMP 5/16"
294	P0568294	TAP SCREW M4 X 10
295	P0568295	FLAT WASHER 8MM
297	P0568297	FLAT WASHER 8MM
298	P0568298	LOCK WASHER 8MM
300	P0568300	FLANGE SCREW M6-1 X 10
301	P0568301	FLAT WASHER 6MM
302	P0568302	SUPPORT PLATE
303	P0568303	CONDUIT 1/2" X 43"
304	P0568304	CORD BUSHING
314	P0568314	HEX BOLT M12-1.75 X 100
315	P0568315	LOCK WASHER 12MM
316	P0568316	FLAT WASHER 12MM
317	P0568317	RISER BAR
322	P0568322	PRESS PLATE
323	P0568323	PHLP HD SCR M6-1 X 8



Table



REF	PART #	DESCRIPTION
155V2	P0568155V2	FENCE V2.08.10
155V2-4	P0568155V2-4	PLATE SPRING
155V2-5	P0568155V2-5	FLANGE SCREW M4-.7 X 8
155V2-6	P0568155V2-6	PIVOT BLOCK V2.08.10
155V2-7	P0568155V2-7	HEX NUT M8-1.25
155V2-9	P0568155V2-9	SHAFT V2.08.10
155V2-10	P0568155V2-10	SET SCREW M7-1 X 10 (PLASTIC)
155V2-12	P0568155V2-12	SET SCREW M8-1.25 X 12
155V2-13	P0568155V2-13	HEX BOLT M8-1.25 X 20
155V2-14	P0568155V2-14	HEX NUT M8-1.25
155V2A	P0568155V2A	FENCE ASSEMBLY V2.08.10
156V2	P0568156V2	HANDLE V2.08.10
157V2	P0568157V2	POINTER V2.08.10
158	P0568158	FLANGE SCREW M5-.8 X 8
162	P0568162	CAP SCREW M10-1.5 X 30
163	P0568163	LOCK WASHER 10MM
164	P0568164	FLAT WASHER 10MM
165	P0568165	TRUNNION HOUSING
166V2	P0568166V2	BLADE GUARD V2.06.09
167	P0568167	FLANGE SCREW M6-1 X 10
168	P0568168	PRESS SHAFT
169	P0568169	MICRO ADJUSTING RING
170	P0568170	CAP SCREW M8-1.25 X 20

REF	PART #	DESCRIPTION
172	P0568172	HANDLE SHAFT M12-2 90MM
173	P0568173	SLEEVE
174	P0568174	CAP SCREW M10-1.5 X 35
175	P0568175	LOCK WASHER 10MM
176	P0568176	FLAT WASHER 10MM
177	P0568177	TRUNNION BLOCK
178	P0568178	PRESS BLOCK
179	P0568179	PHLP HD SCR M4-.7 X 10
180	P0568180	POINTER
181V2	P0568181V2	FENCE RAIL V2.08.10
182	P0568182	TABLE
182-1	P0568182-1	TABLE SCALE
183	P0568183	TABLE INSERT
184	P0568184	MITER GAUGE ASSY
296V2	P0568296V2	NYLON PAD 10 X 28 X 1 V2.08.10
326	P0568326	HEX NUT M12-1.75
327	P0568327	FENCE RAIL MOUNTING PLATE
328	P0568328	FLAT WASHER 6MM
329	P0568329	LOCK WASHER 6MM
330	P0568330	HEX BOLT M6-1 X 20
331	P0568331	FLAT WASHER 8MM
332	P0568332	LOCK WASHER 8MM
333	P0568333	HEX BOLT M8-1.25 X 20



Guide Post

Upper Guide Adjustment

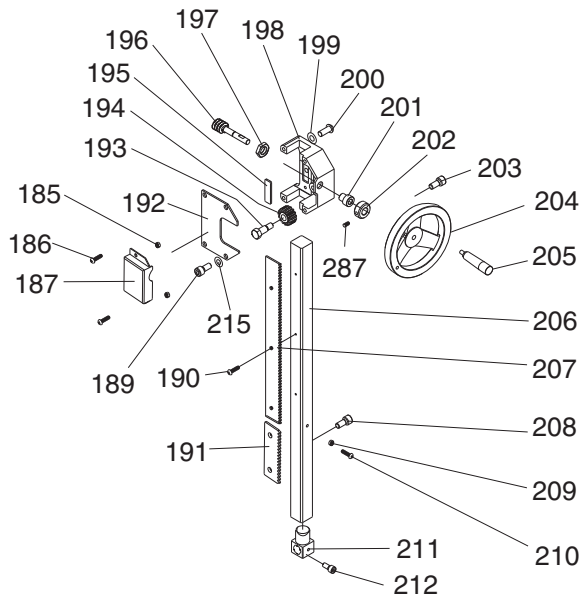
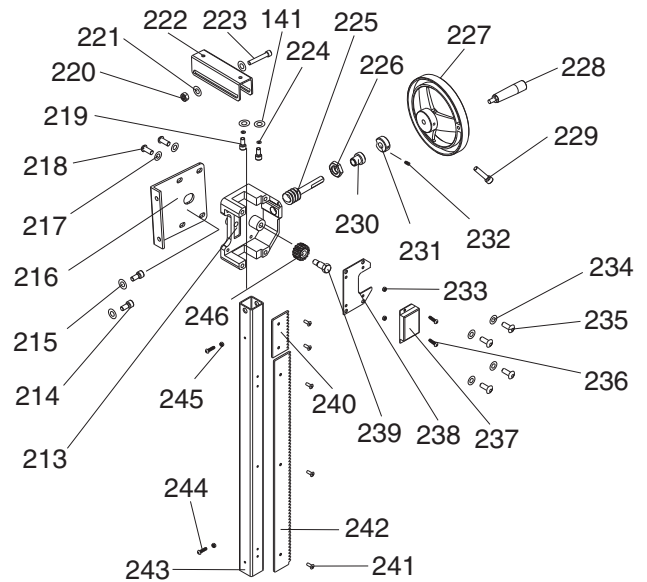


Table Tilt Adjustment



REF PART # DESCRIPTION

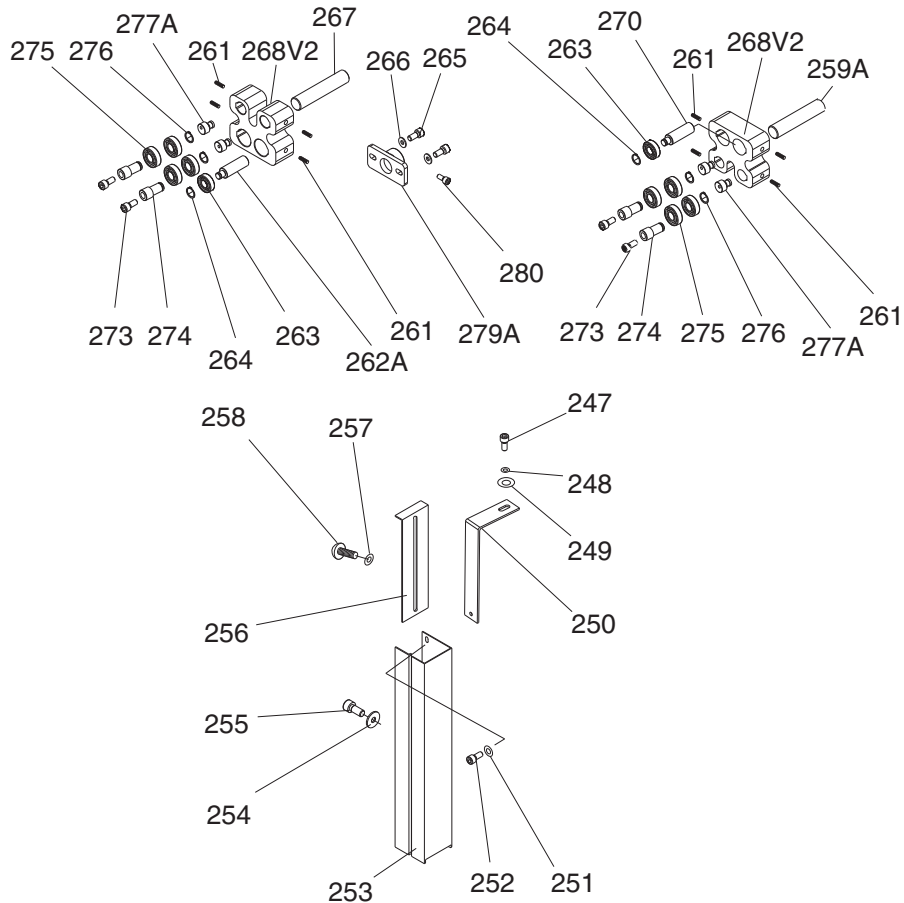
141	P0568141	FLAT WASHER 6MM
185	P0568185	LOCK WASHER 8MM
186	P0568186	FLANGE SCREW M5-.8 X 10
187	P0568187	COVER
189	P0568189	CAP SCREW M8-1.25 X 16
190	P0568190	FLAT HD SCR M4-.7 X 10
191	P0568191	EXTENSION RACK
192	P0568192	COVER
193	P0568193	PINION GEAR BOLT
194	P0568194	PINION GEAR
195	P0568195	FIXED PLATE
196	P0568196	WORM SHAFT
197	P0568197	HEX NUT M16-1.5 THIN
198	P0568198	GUIDE BRACKET
199	P0568199	FLAT WASHER 8MM
200	P0568200	BUTTON HD CAP SCR M8-1.25 X 35
201	P0568201	BUSHING
202	P0568202	LOCK COLLAR
203	P0568203	CAP SCREW M6-1 X 25
204	P0568204	HANDWHEEL TYPE-35 178D X 14B-S X M10-1.5
205	P0568205	FIXED HANDLE 24 X 90, M10-1.5 X 12
206	P0568206	UPPER BLADE GUIDE SUPPORT BLOCK
207	P0568207	RACK
208	P0568208	CAP SCREW M6-1 X 16
209	P0568209	HEX NUT M4-.7
210	P0568210	PHLP HD SCR M4-.7 X 10
211	P0568211	UPPER BLADE GUIDE SUPPORT BASE
212	P0568212	HEX BOLT M6-1 X 16
213	P0568213	GUIDE BRACKET
214	P0568214	CAP SCREW M8-1.25 X 20
215	P0568215	LOCK WASHER 8MM
216	P0568216	LOCK WASHER 8MM
217	P0568217	FLAT WASHER 8MM
218	P0568218	BUTTON HD CAP SCR M8-1.25 X 20
219	P0568219	HEX BOLT M6-1 X 10
220	P0568220	LOCK NUT M8-1.25
221	P0568221	LOCK WASHER 8MM
222	P0568222	SLIDING PLATE
223	P0568223	HEX BOLT M8-1.25 X 55
224	P0568224	LOCK WASHER 6MM
225	P0568225	WORM SHAFT
226	P0568226	HEX NUT M16-1.5 THIN
227	P0568227	HANDWHEEL
228	P0568228	PHLP HD SCR M4-.7 X 20
229	P0568229	CAP SCREW M6-1 X 25
230	P0568230	BUSHING
231	P0568231	LOCK COLLAR 22 X 10 X 10MM
232	P0568232	SET SCREW M5-.8 X 5
233	P0568233	HEX NUT M8-1.25
234	P0568234	LOCK WASHER 8MM
235	P0568235	CAP SCREW M8-1.25 X 16
236	P0568236	FLANGE SCREW M5-.8 X 10
237	P0568237	HOUSING COVER
238	P0568238	GEAR COVER
239	P0568239	PINION GEAR BOLT
240	P0568240	EXTENSION RACK
241	P0568241	FLAT HD SCR M4-.7 X 10
242	P0568242	RACK
243	P0568243	SQUARE TUBE
244	P0568244	PHLP HD SCR M4-.7 X 10
245	P0568245	HEX NUT M4-.7
246	P0568246	PINION GEAR 15T
287	P0568287	SET SCREW M5-.8 X 5

REF PART # DESCRIPTION

141	P0568141	FLAT WASHER 6MM
185	P0568185	LOCK WASHER 8MM
186	P0568186	FLANGE SCREW M5-.8 X 10
187	P0568187	COVER
189	P0568189	CAP SCREW M8-1.25 X 16
190	P0568190	FLAT HD SCR M4-.7 X 10
191	P0568191	EXTENSION RACK
192	P0568192	COVER
193	P0568193	PINION GEAR BOLT
194	P0568194	PINION GEAR
195	P0568195	FIXED PLATE
196	P0568196	WORM SHAFT
197	P0568197	HEX NUT M16-1.5 THIN
198	P0568198	GUIDE BRACKET
199	P0568199	FLAT WASHER 8MM
200	P0568200	BUTTON HD CAP SCR M8-1.25 X 35
201	P0568201	BUSHING
202	P0568202	LOCK COLLAR
203	P0568203	CAP SCREW M6-1 X 25
204	P0568204	HANDWHEEL TYPE-35 178D X 14B-S X M10-1.5
205	P0568205	FIXED HANDLE 24 X 90, M10-1.5 X 12
206	P0568206	UPPER BLADE GUIDE SUPPORT BLOCK
207	P0568207	RACK
208	P0568208	CAP SCREW M6-1 X 16
209	P0568209	HEX NUT M4-.7
210	P0568210	PHLP HD SCR M4-.7 X 10
211	P0568211	UPPER BLADE GUIDE SUPPORT BASE
212	P0568212	HEX BOLT M6-1 X 16
213	P0568213	GUIDE BRACKET
214	P0568214	CAP SCREW M8-1.25 X 20
215	P0568215	LOCK WASHER 8MM
216	P0568216	LOCK WASHER 8MM
217	P0568217	FLAT WASHER 8MM
218	P0568218	BUTTON HD CAP SCR M8-1.25 X 20
219	P0568219	HEX BOLT M6-1 X 10
220	P0568220	LOCK NUT M8-1.25
221	P0568221	LOCK WASHER 8MM
222	P0568222	SLIDING PLATE
223	P0568223	HEX BOLT M8-1.25 X 55
224	P0568224	LOCK WASHER 6MM
225	P0568225	WORM SHAFT
226	P0568226	HEX NUT M16-1.5 THIN
227	P0568227	HANDWHEEL
228	P0568228	PHLP HD SCR M4-.7 X 20
229	P0568229	CAP SCREW M6-1 X 25
230	P0568230	BUSHING
231	P0568231	LOCK COLLAR 22 X 10 X 10MM
232	P0568232	SET SCREW M5-.8 X 5
233	P0568233	HEX NUT M8-1.25
234	P0568234	LOCK WASHER 8MM
235	P0568235	CAP SCREW M8-1.25 X 16
236	P0568236	FLANGE SCREW M5-.8 X 10
237	P0568237	HOUSING COVER
238	P0568238	GEAR COVER
239	P0568239	PINION GEAR BOLT
240	P0568240	EXTENSION RACK
241	P0568241	FLAT HD SCR M4-.7 X 10
242	P0568242	RACK
243	P0568243	SQUARE TUBE
244	P0568244	PHLP HD SCR M4-.7 X 10
245	P0568245	HEX NUT M4-.7
246	P0568246	PINION GEAR 15T
287	P0568287	SET SCREW M5-.8 X 5



Blade Guides

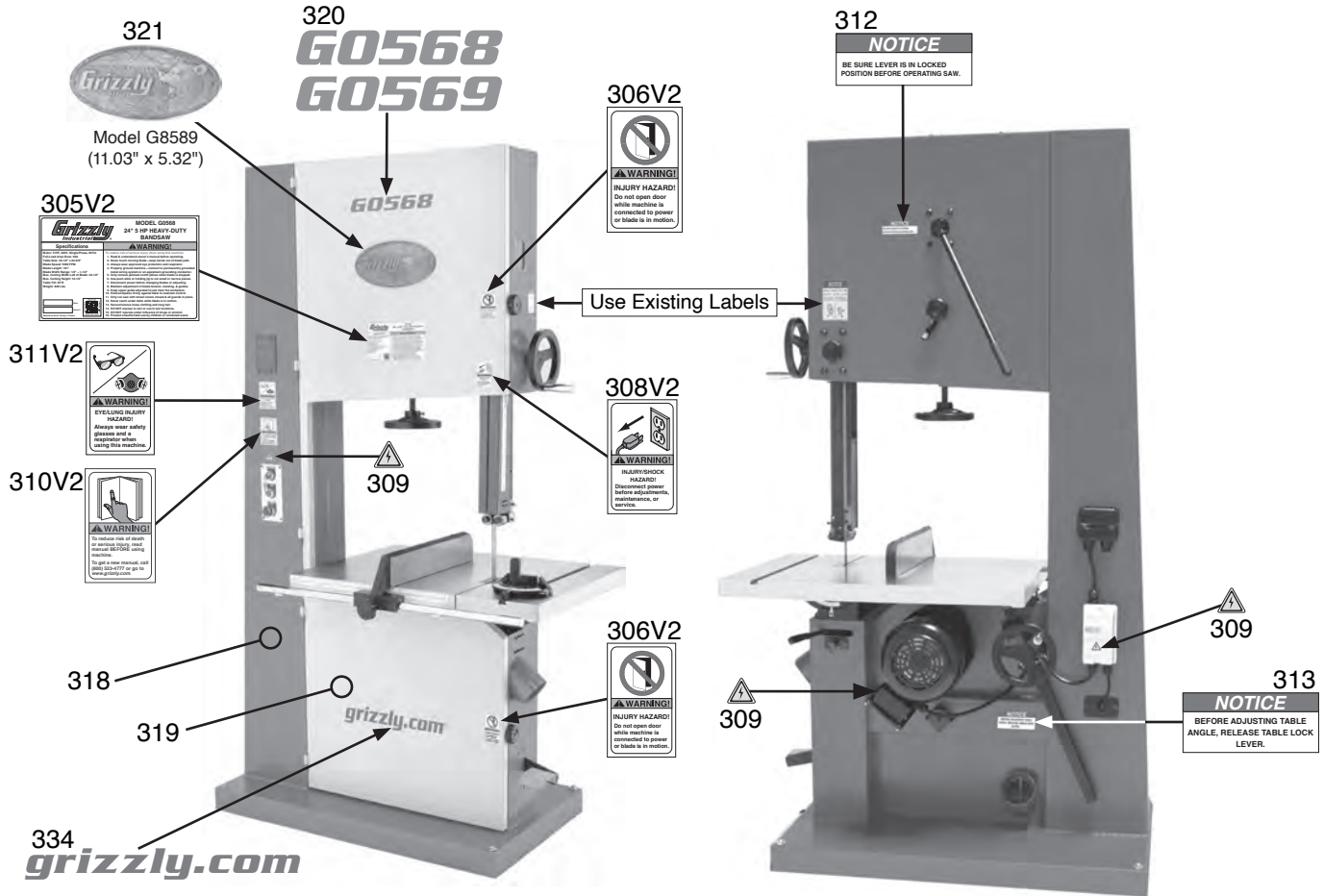


REF	PART #	DESCRIPTION
247	P0568247	CAP SCREW M6-1 X 10
248	P0568248	LOCK WASHER 6MM
249	P0568249	FLAT WASHER 6MM
250	P0568250	L-BRACKET
251	P0568251	FLAT WASHER 6MM
252	P0568252	CAP SCREW M6-1 X 10
253	P0568253	BLADE GUARD
254	P0568254	FLAT WASHER 6MM
255	P0568255	CAP SCREW M6-1 X 10
256	P0568256	SLIDING PLATE
257	P0568257	FLAT WASHER 6MM (PLASTIC)
258	P0568258	PHLP HD SCR M6-1 X 10
259A	P0568259A	ADJUST BAR (ROUND) V2.10.05
261	P0568261	SET SCREW M6-1 X 10
262A	P0568262A	BEARING SHAFT

REF	PART #	DESCRIPTION
263	P0568263	BALL BEARING 6201ZZ
264	P0568264	EXT RETAINING RING 12MM
265	P0568265	CAP SCREW M6-1 X 16
266	P0568266	FLAT WASHER 6MM
267	P0568267	ADJUSTING SHAFT
268V2	P0568268V2	BLADE GUIDE SUPPORT (ROUND) V2.12.05
270	P0568270	BEARING SHAFT
273	P0568273	CAP SCREW M6-1 x 40
274	P0568274	BEARING BUSHING
275	P0568275	BALL BEARING 6202ZZ
276	P0568276	EXT RETAINING RING 15MM
277A	P0568277A	ECCENTRIC SHAFT (ROUND) V2.12.05
279A	P0568279A	SUPPORT BRACKET V2.09.06
280	P0568280	HEX BOLT M6-1 X 16



Labels & Cosmetics



REF	PART #	DESCRIPTION
305V2	P0568305V2	MACHINE ID LABEL (G0568) V2.01.14
305V2	P0569305V2	MACHINE ID LABEL (G0569) V2.01.14
306V2	P0568306V2	KEEP DOOR CLOSED LABEL V2.01.14
308V2	P0568308V2	DISCONNECT POWER LABEL V2.01.14
309	P0568309	ELECTRICITY LABEL
310V2	P0568310V2	READ MANUAL LABEL V2.01.14
311V2	P0568311V2	GLASSES/RESPIRATOR LABEL V2.01.14
312	P0568312	TENSION LEVER LABEL

REF	PART #	DESCRIPTION
313	P0568313	TABLE LOCK LABEL
318	P0568318	TOUCH-UP PAINT, GRIZZLY GREEN
319	P0568319	TOUCH-UP PAINT, GREY
320	P0568320	MODEL NUMBER LABEL (G0568)
320	P0569320	MODEL NUMBER LABEL (G0569)
321	P0568321	GRIZZLY NAMEPLATE-LARGE
334	P0568334	GRIZZLY.COM LABEL

⚠️ WARNING

Safety labels warn about machine hazards and ways to prevent injury. The owner of this machine **MUST** maintain the original location and readability of the labels on the machine. If any label is removed or becomes unreadable, **REPLACE** that label before using the machine again. Contact Grizzly at (800) 523-4777 or www.grizzly.com to order new labels.

