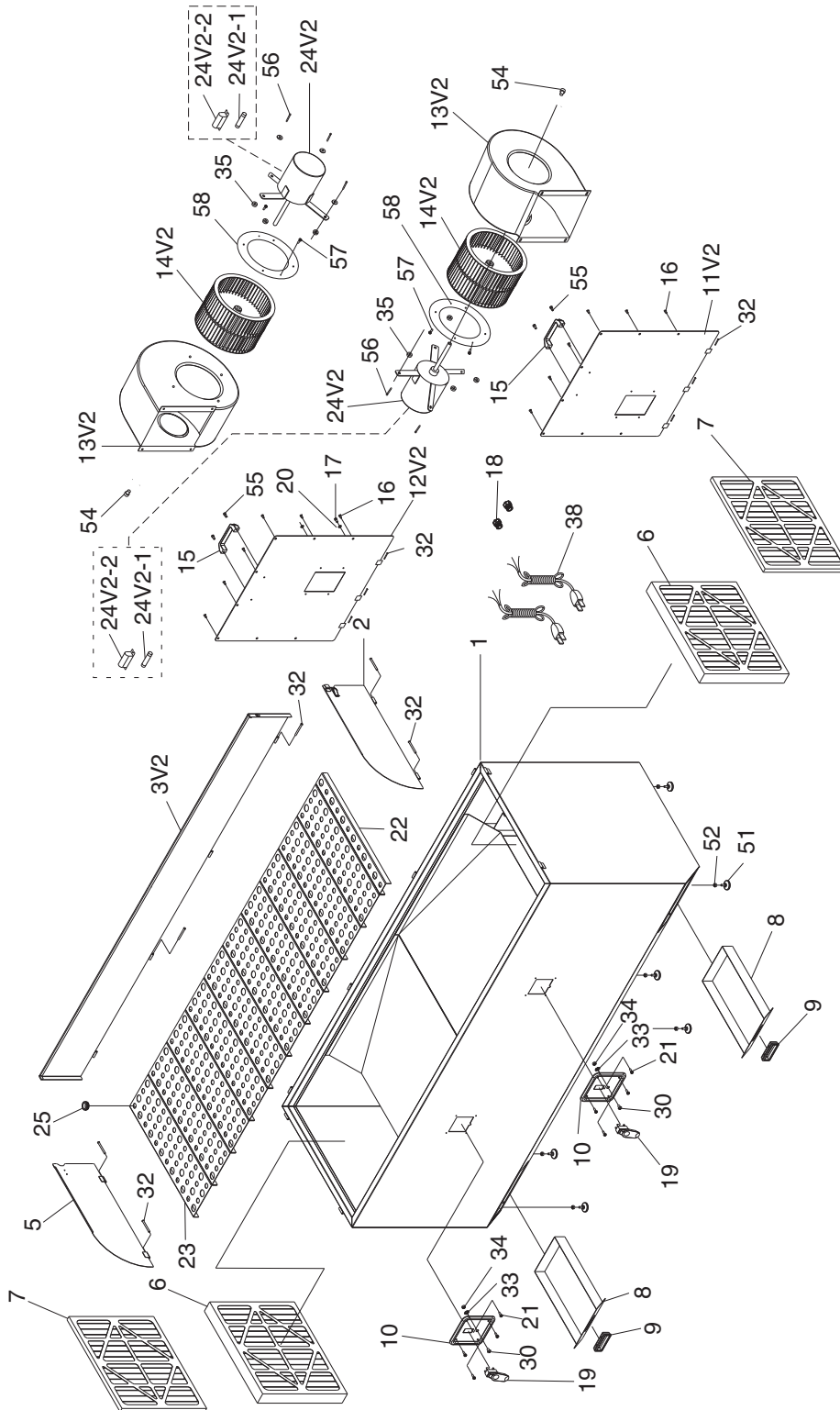


SECTION 9: PARTS

We do our best to stock replacement parts when possible, but we cannot guarantee that all parts shown are available for purchase. Call (800) 523-4777 or visit www.grizzly.com/parts to check for availability.

Main Breakdown



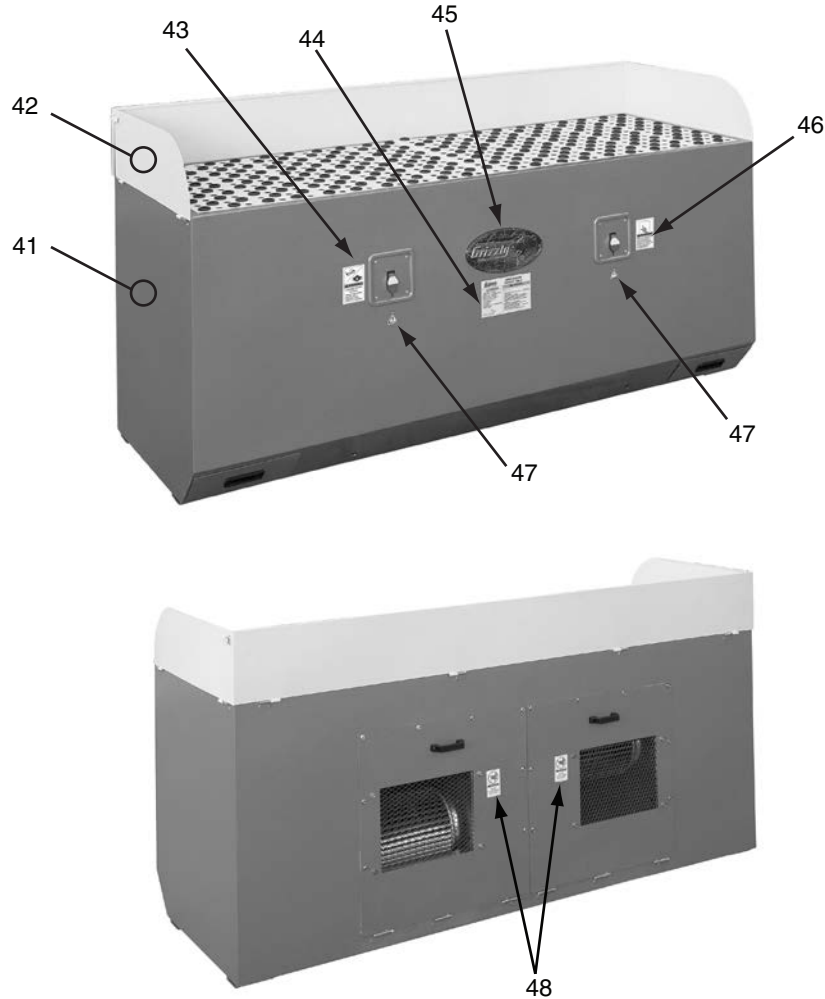
Parts List

REF	PART #	DESCRIPTION
1	P0631001	MAIN BASE
2	P0631002	RIGHT PANEL
3V2	P0631003V2	CENTER PANEL 1PC V2.03.10
5	P0631005	LEFT PANEL
6	P0631006	FILTER 16" X 25" X 2" (0.3 MICRONS)
7	P0631007	FILTER 16" X 25" X 1" (1 MICRONS)
8	P0631008	DRAWER
9	P0631009	DRAWER HANDLE
10	P0631010	SWITCH PLATE
11V2	P0631011V2	LEFT OUTLET PLATE V2.03.10
12V2	P0631012V2	RIGHT OUTLET PLATE V2.03.10
13V2	P0631013V2	FAN HOUSING V2.03.10
14V2	P0631014V2	PLASTIC IMPELLER V2.03.10
15	P0631015	OUTLET PLATE HANDLE
16	PB02	HEX BOLT 1/4-20 X 5/8
17	PCAP30	CAP SCREW 5/16-18 X 1/2
18	P0631018	STRAIN RELIEF
19	G8988	SAFETY PADDLE SWITCH
20	PW07	FLAT WASHER 5/16
21	PS06	PHLP HD SCR 10-24 X 3/8

REF	PART #	DESCRIPTION
22	P0631022	SMALL DUST COLLECTING PLATE
23	P0631023	BIG DUST COLLECTING PLATE
24V2	P0631024V2	MOTOR 1 HP 110V 1-PH V2.03.10
24V2-1	P0631024V2-1	R CAPACITOR 70M 250V V2.03.10
24V2-2	P0631024V2-2	CAPACITOR COVER V2.03.10
25	P0631025	RUBBER PAD
30	PS06	PHLP HD SCR 10-24 X 3/8
32	P0631032	PIN 6 X 66
33	PTLW01	EXT TOOTH WASHER #10
34	PN07	HEX NUT 10-24
35	P0631035	RUBBER FLAT WASHER 6.5 x 18 x 3
38	P0631038	POWER CORD
51	P0631051	FOOT PAD SCREW 3/8-16 X 2
52	PN08	HEX NUT 3/8-16
54	PCAP04	CAP SCREW 1/4-20 X 1/2
55	PS12	PHLP HD SCR 1/4-20 X 5/8
56	PFS18	FLANGE SCREW 1/4-20 X 3/4
57	PS06	PHLP HD SCR 10-24 X 3/8
58	P0631058	INLET COVER



Labels & Cosmetics



REF	PART #	DESCRIPTION
41	PPAINT-1	PAINT-GRIZZLY GREEN
42	PPAINT-11	PUTTY TOUCH UP PAINT
43	PLABEL-57	GLASSES/RESPIRATOR 2W X 3.3H
44	P0631044	G0631 MACHINE ID LABEL

REF	PART #	DESCRIPTION
45	G8589	GRIZZLY NAMEPLATE-LARGE
46	PLABEL-12A	READ MANUAL LABEL
47	PLABEL-14	ELECTRICITY LABEL
48	P0631048	NO HANDS IN OUTLET LABEL

WARNING

Safety labels warn about machine hazards and ways to prevent injury. The owner of this machine **MUST** maintain the original location and readability of the labels on the machine. If any label is removed or becomes unreadable, **REPLACE** that label before using the machine again. Contact Grizzly at (800) 523-4777 or www.grizzly.com to order new labels.

