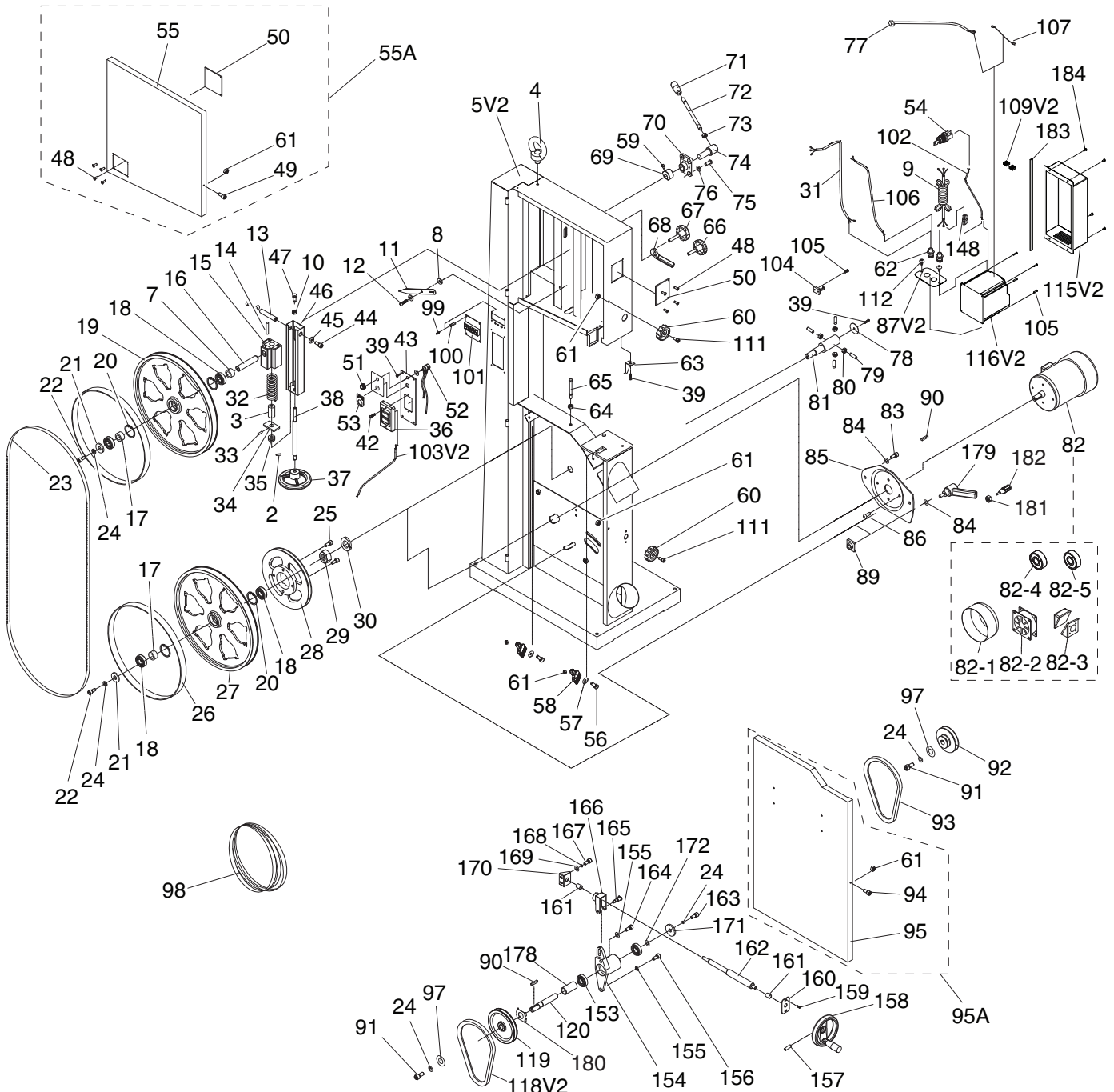


SECTION 11: PARTS

We do our best to stock replacement parts when possible, but we cannot guarantee that all parts shown are available for purchase. Call (800) 523-4777 or visit www.grizzly.com/parts to check for availability.

Main



Main Parts List

REF PART #	DESCRIPTION
2	P0640X002 SET SCREW M6-1 X 10
3	P0640X003 SPRING BUSHING
4	P0640X004 LIFTING EYE BOLT M10-1.5
5V2	P0640X005V2 MACHINE BODY V2.12.20
7	P0640X007 WHEEL SHAFT BUSHING
8	P0640X008 FLAT WASHER 4MM
9	P0640X009 POWER CORD 14G 3W
10	P0640X010 HEX NUT M6-1
11	P0640X011 TENSION POINTER
12	P0640X012 STEP SCREW M4-.7 X 6
13	P0640X013 HINGE SHAFT
14	P0640X014 ROLL PIN 5 X 35
15	P0640X015 UPPER WHEEL SHAFT HINGE
16	P0640X016 UPPER WHEEL SHAFT
17	P0640X017 WHEEL BUSHING
18	P0640X018 BALL BEARING 6204-2RS
19	P0640X019 UPPER WHEEL 17"
20	P0640X020 INT RETAINING RING 47MM
21	P0640X021 FLAT WASHER 8MM
22	P0640X022 CAP SCREW M8-1.25 X 16
23	P0640X023 WOOD SAW BLADE 131-1/2" X 1/2"
24	P0640X024 LOCK WASHER 8MM
25	P0640X025 CAP SCREW M8-1.25 X 20
26	P0640X026 URETHANE TIRE 17" 1-PAIR
27	P0640X027 LOWER WHEEL 17"
28	P0640X028 WHEEL PULLEY
29	P0640X029 HEX NUT 1-14
30	P0640X030 LOCK WASHER 1"
31	P0640X031 MOTOR CORD 16G 4W
32	P0640X032 COMPRESSION SPRING 8 X 7-1/2 X 36
33	P0640X033 ROLL PIN 3 X 16
34	P0640X034 SPRING BASE PLATE
35	P0640X035 THRUST BEARING 51201
36	P0640X036 START/STOP SWITCH CHENG SHANG 220V
37	P0640X037 TENSION HANDWHEEL
38	P0640X038 TENSION ADJUSTING BOLT
39	P0640X039 FLANGE SCREW M5-.8 X 10
40	P0640X040 EXT TOOTH WASHER 5MM
42	P0640X042 FLANGE SCREW M5-.8 X 16
43	P0640X043 CONTROL PANEL PLATE
44	P0640X044 CAP SCREW M8-1.25 X 16
45	P0640X045 FLAT WASHER 8MM
46	P0640X046 UPPER WHEEL SLIDING BRACKET
47	P0640X047 CAP SCREW M6-1 X 25
48	P0640X048 STEEL BLIND RIVET 3 X 10MM
49	P0640X049 CAP SCREW M6-1 X 10
50	P0640X050 PLASTIC WINDOW
51	P0640X051 VS DIAL
52	P0640X052 POTENTIOMETER JIA XIN CF-X2-M-SA6M46E
53	P0640X053 ON/OFF KEY SWITCH PLATE
54	P0640X054 KEY SWITCH JUN YANG 22
55	P0640X055 UPPER WHEEL COVER

REF PART #	DESCRIPTION
55A	P0640X055A UPPER WHEEL COVER ASSEMBLY
56	P0640X056 HEX BOLT M6-1 X 25
57	P0640X057 FLAT WASHER 6MM
58	P0640X058 WHEEL BRUSH
59	P0640X059 CAP SCREW M6-1 X 25
60	P0640X060 DOOR KNOB
61	P0640X061 LOCK NUT M6-1
62	P0640X062 STRAIN RELIEF 16MM
63	P0640X063 HEIGHT POINTER
64	P0640X064 HEX NUT M8-1.25
65	P0640X065 HEX BOLT M8-1.25 X 90
66	P0640X066 KNOB BOLT M10-1.5 X 20
67	P0640X067 KNOB BOLT M10-1.5 X 55
68	P0640X068 LOCK HANDLE M10-1.5
69	P0640X069 CAM
70	P0640X070 SHAFT BRACKET
71	P0640X071 LEVER KNOB
72	P0640X072 LEVER ROD
73	P0640X073 HEX NUT M12-1.75
74	P0640X074 QUICK-TENSION SHAFT
75	P0640X075 BUTTON HD CAP SCR M8-1.25 X 20
76	P0640X076 LOCK WASHER 8MM
77	P0640X077 PC BOARD POWER CORD
78	P0640X078 SHAFT COVER
79	P0640X079 SET SCREW M8-1.25 X 20
80	P0640X080 HEX NUT M8-1.25
81	P0640X081 LOWER WHEEL SHAFT
82	P0640X082 MOTOR 2HP 220V 3-PH
82-1	P0640X082-1 MOTOR FAN COVER
82-2	P0640X082-2 MOTOR FAN
82-3	P0640X082-3 MOTOR JUNCTIONBOX
82-4	P0640X082-4 BALL BEARING 6203ZZ
82-5	P0640X082-5 BALL BEARING 6205ZZ
83	P0640X083 HEX BOLT M10-1.5 X 25
84	P0640X084 LOCK WASHER 10MM
85	P0640X085 MOTOR MOUNT
86	P0640X086 BUTTON HD CAP SCR M8-1.25 X 20
87V2	P0640X087V2 STRAIN RELIEF PLATE V2.12.20
89	P0640X089 LOCK HANDLE BRACKET
90	P0640X090 KEY 5 X 5 X 35
91	P0640X091 HEX BOLT M8-1.25 X 20 LH
92	P0640X092 MOTOR PULLEY
93	P0640X093 V-BELT A44
94	P0640X094 CAP SCREW M6-1 X 10
95	P0640X095 LOWER WHEEL COVER
95A	P0640X095A LOWER WHEEL COVER ASSEMBLY
97	P0640X097 FLAT WASHER 8MM
98	P0640X098 METAL SAW BLADE 131-1/2" X 1/2"
99	P0640X099 PHLP HD SCR M3-.5 X 6
100	P0640X100 HEX NUT M3-.5
101	P0640X101 DIGITAL DISPLAY
102	P0640X102 KEY SWITCH CONNECTOR CORD 14G



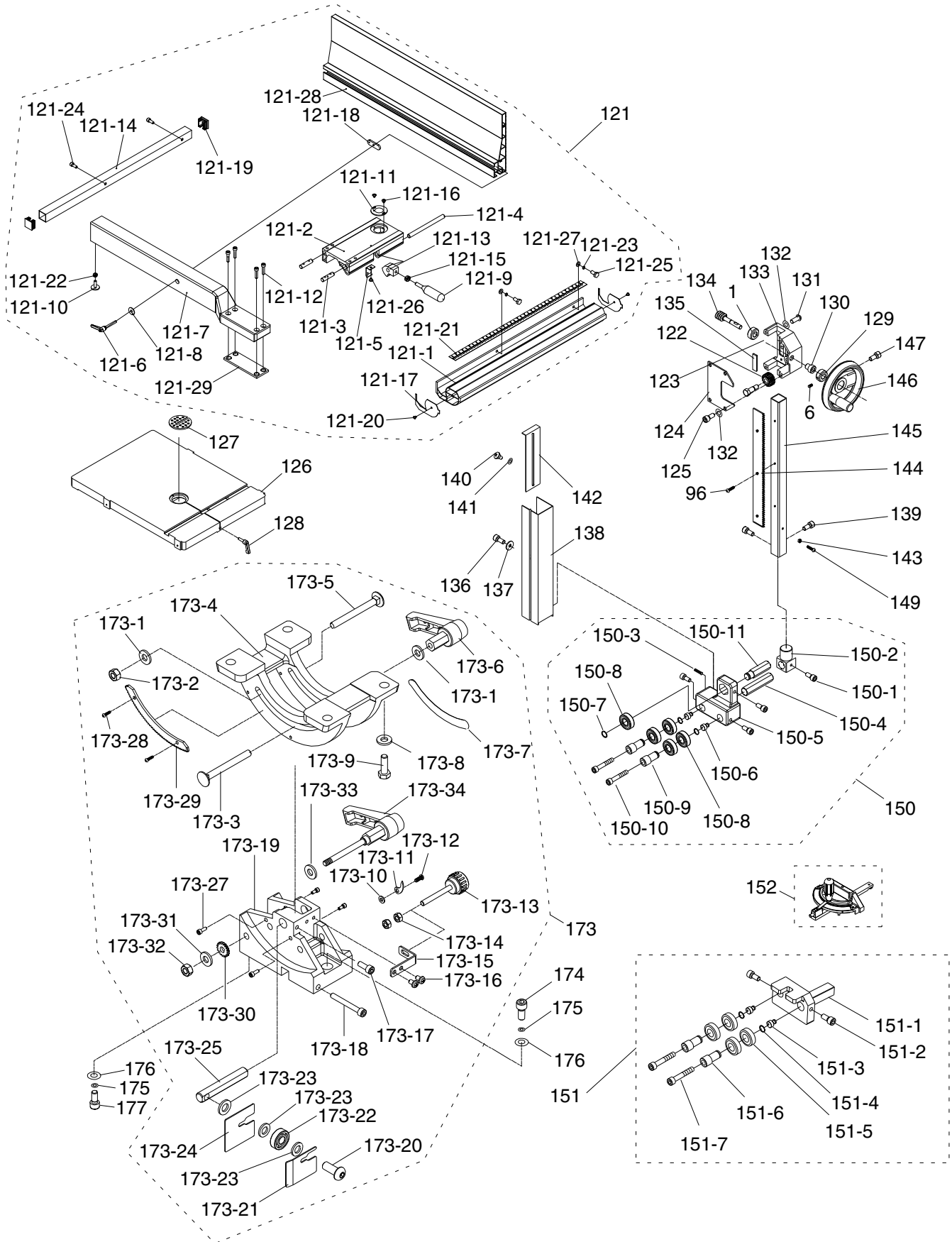
Main Parts List

REF	PART #	DESCRIPTION
103V2	P0640X103V2	SWITCH CONNECTOR CORD 20G 47" V2.12.20
104	P0640X104	BLADE HOOK
105	P0640X105	PHLP HD SCR M4-.7 X 10
106	P0640X106	MOTOR FAN CONNECTOR CORD 18G
107	P0640X107	CONNECTOR WIRE 14G
109V2	P0640X109V2	TERMINAL BLOCK 221-413 3P V2.12.20
111	P0640X111	CAP SCREW M6-1 X 20
112	P0640X112	TAP SCREW M4 X 8
115V2	P0640X115V2	INVERTER COVER V2.12.20
116V2	P0640X116V2	INVERTER TECO L510-202-SH1-N V2.12.20
118V2	P0640X118V2	V-BELT A28
119	P0640X119	IDLER PULLEY
120	P0640X120	PULLEY SHAFT
148	P0640X148	CORD CONNECTOR 224-201
153	P0640X153	BALL BEARING 6204-2RS
154	P0640X154	BEARING STAND
155	P0640X155	LOCK WASHER 10MM
156	P0640X156	HEX BOLT M10-1.5 X 25
157	P0640X157	SET SCREW M6-1 X 6
158	P0640X158	BELT TENSION HANDWHEEL
159	P0640X159	FLANGE SCREW M6-1 X 10

REF	PART #	DESCRIPTION
160	P0640X160	ADJUSTING BOLT BRACKET
161	P0640X161	SELF-LUBRICATING BUSHING
162	P0640X162	ADJUSTING BOLT M10-1.5 X 227
163	P0640X163	BUTTON HD CAP SCR M8-1.25 X 20
164	P0640X164	CAP SCREW M10-1.5 X 35
165	P0640X165	SHAFT BOLT 18 X 14 X 37MM
166	P0640X166	ADJUSTING STAND
167	P0640X167	CAP SCREW M6-1 X 16
168	P0640X168	LOCK WASHER 6MM
169	P0640X169	FLAT WASHER 6MM
170	P0640X170	ADJUSTING BOLT END BRACKET
171	P0640X171	SPACER 60 X 5 X 8.5MM
172	P0640X172	FLAT WASHER 8MM
178	P0640X178	PULLEY SHAFT BUSHING
179	P0640X179	LOCK HANDLE
180	P0640X180	PULLEY SHAFT BRACKET
181	P0640X181	HEX NUT M8-1.25
182	P0640X182	HANDLE
183	P0640X183	FOAM TAPE 2 X 7 X 100MM
184	P0640X184	BUTTON HD CAP SCR M5-.8 X 8



Fence & Blade Guides



Fence & Blade Guides Parts List

REF	PART #	DESCRIPTION
1	P0640X001	BUSHING
6	P0640X006	SET SCREW M5-.8 X 6
96	P0640X096	FLAT HD SCR M4-.7 X 8
121	P0640X121	FENCE ASSEMBLY 590MM
121-1	P0640X121-1	FRONT RAIL 640MM
121-2	P0640X121-2	FENCE BASE
121-3	P0640X121-3	FIXED SHAFT
121-4	P0640X121-4	LOCK SHAFT
121-5	P0640X121-5	SPRING PIECE 5 X 34 X 15 X 19MM
121-6	P0640X121-6	LOCK HANDLE M8-1.25 X 44
121-7	P0640X121-7	FENCE 590MM
121-8	P0640X121-8	FLAT WASHER 8MM
121-9	P0640X121-9	FENCE HANDLE M8-1.25 X 22
121-10	P0640X121-10	RAIL PAD
121-11	P0640X121-11	CONVEX WINDOW
121-12	P0640X121-12	CAP SCREW M6-1 X 25
121-13	P0640X121-13	LOCK BLOCK
121-14	P0640X121-14	REAR RAIL 640MM
121-15	P0640X121-15	HEX NUT M8-1.25
121-16	P0640X121-16	FLANGE SCREW M4-.7 X 6
121-17	P0640X121-17	FRONT RAIL END PLATE
121-18	P0640X121-18	T-SLOT NUT R10 SLOT M8 X 1.25
121-19	P0640X121-19	REAR RAIL END PLUG
121-20	P0640X121-20	TAP SCREW M3.5 X 8
121-21	P0640X121-21	FENCE SCALE
121-22	P0640X121-22	HEX NUT M6-1
121-23	P0640X121-23	LOCK WASHER 6MM
121-24	P0640X121-24	CAP SCREW M6-1 X 16
121-25	P0640X121-25	HEX BOLT M6-1 X 20
121-26	P0640X121-26	FLANGE BOLT M4-.7 X 8
121-27	P0640X121-27	FLAT WASHER 6MM
121-28	P0640X121-28	RESAW FENCE 590MM
121-29	P0640X121-29	SPACER PLATE
122	P0640X122	GEAR 12T/20T
123	P0640X123	GEAR BOLT
124	P0640X124	GUIDE BRACKET COVER
125	P0640X125	CAP SCREW M8-1.25 X 16
126	P0640X126	TABLE 17" X 24"
127	P0640X127	TABLE INSERT
128	P0640X128	TABLE PIN 8 X 29 X R4.5
129	P0640X129	HANDWHEEL BUSHING

REF	PART #	DESCRIPTION
130	P0640X130	BUSHING
131	P0640X131	BUTTON HD CAP SCR M8-1.25 X 20
132	P0640X132	LOCK WASHER 8MM
133	P0640X133	GUIDE BRACKET
134	P0640X134	WORM SHAFT
135	P0640X135	FIXED PLATE
136	P0640X136	CAP SCREW M5-.8 X 10
137	P0640X137	FLAT WASHER 5MM
138	P0640X138	PROTECT COVER
139	P0640X139	CAP SCREW M6-1 X 16
140	P0640X140	STEP SCREW M4-.7 X 5
141	P0640X141	FIBER WASHER 6 X 13MM
142	P0640X142	SLIDING PLATE
143	P0640X143	HEX NUT M4-.7
144	P0640X144	GUIDE POST RACK
145	P0640X145	GUIDE POST
146	P0640X146	GUIDE POST HANDWHEEL
147	P0640X147	CAP SCREW M6-1 X 20
149	P0640X149	PHLP HD SCR M4-.7 X 10
150	P0640X150	UPPER BLADE GUIDE ASSEMBLY
150-1	P0640X150-1	CAP SCREW M6-1 X 16
150-2	P0640X150-2	UPPER GUIDE SUPPORT BLOCK
150-3	P0640X150-3	SET SCREW M6-1 X 10
150-4	P0640X150-4	BLADE GUIDE ADJUSTMENT SHAFT
150-5	P0640X150-5	UPPER BLADE GUIDE SUPPORT
150-6	P0640X150-6	ECCENTRIC SHAFT
150-7	P0640X150-7	EXT RETAINING RING 15MM
150-8	P0640X150-8	BALL BEARING 6202ZZ
150-9	P0640X150-9	KNURLED KNOB BUSHING
150-10	P0640X150-10	CAP SCREW M6-1 X 35
150-11	P0640X150-11	SUPPORT BEARING SHAFT
151	P0640X151	LOWER BLADE GUIDE ASSEMBLY
151-1	P0640X151-1	LOWER BLADE GUIDE SUPPORT
151-2	P0640X151-2	CAP SCREW M6-1 X 16
151-3	P0640X151-3	ECCENTRIC SHAFT
151-4	P0640X151-4	EXT RETAINING RING 15MM
151-5	P0640X151-5	BALL BEARING 6202ZZ
151-6	P0640X151-6	KNURLED KNOB BUSHING
151-7	P0640X151-7	CAP SCREW M6-1 X 35
152	P0640X152	MITER GAUGE ASSEMBLY



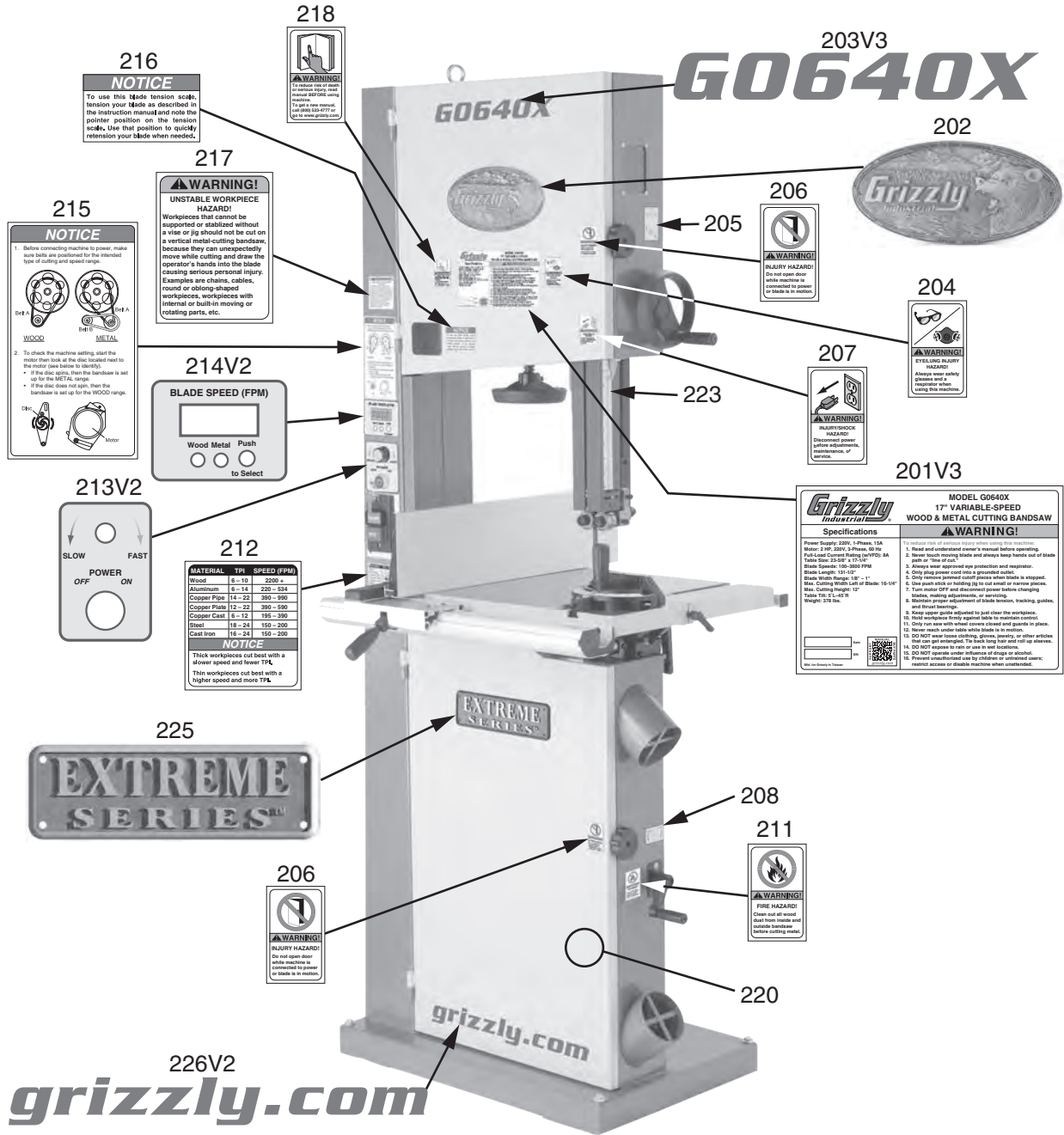
Fence & Blade Guides Parts List

REF	PART #	DESCRIPTION
173	P0640X173	CAST-IRON TRUNNION ASSEMBLY
173-1	P0640X173-1	FLAT WASHER 8MM
173-2	P0640X173-2	LOCK NUT M8-1.25
173-3	P0640X173-3	CARRIAGE BOLT M8-1.25 X 85
173-4	P0640X173-4	UPPER TRUNNION
173-5	P0640X173-5	CARRIAGE BOLT M8-1.25 X 80
173-6	P0640X173-6	LOCK HANDLE M8-1.25
173-7	P0640X173-7	ANGLE LABEL
173-8	P0640X173-8	FLAT WASHER 8MM
173-9	P0640X173-9	HEX BOLT M8-1.25 X 25
173-10	P0640X173-10	FLAT WASHER 4MM
173-11	P0640X173-11	TABLE TILT POINTER
173-12	P0640X173-12	PHLP HD SCR M4-.7 X 6
173-13	P0640X173-13	ADJUSTMENT KNOB BOLT M6-1
173-14	P0640X173-14	HEX NUT M6-1
173-15	P0640X173-15	L-BRACKET
173-16	P0640X173-16	FLAT HD SCR M5-.8 X 15
173-17	P0640X173-17	CAP SCREW M6-1 X 16
173-18	P0640X173-18	CAP SCREW M6-1 X 50

REF	PART #	DESCRIPTION
173-19	P0640X173-19	TRUNNION SUPPORT BRACKET
173-20	P0640X173-20	BUTTON HD CAP SCR M10-1.5 X 30
173-21	P0640X173-21	RIGHT BLADE GUARD
173-22	P0640X173-22	BALL BEARING 6000ZZ
173-23	P0640X173-23	FLAT WASHER 10MM
173-24	P0640X173-24	LEFT BLADE GUARD
173-25	P0640X173-25	SUPPORT BEARING SHAFT
173-27	P0640X173-27	CAP SCREW M5-.8 X 6
173-28	P0640X173-28	PHLP HD SCR M4-.7 X 6
173-29	P0640X173-29	TRUNNION RACK
173-30	P0640X173-30	TRUNNION PINION
173-31	P0640X173-31	FLAT WASHER 8MM
173-32	P0640X173-32	LOCK NUT M8-1.25
173-33	P0640X173-33	FLAT WASHER 12MM
173-34	P0640X173-34	TABLE TILT HANDLE
174	P0640X174	CAP SCREW M10-1.5 X 30
175	P0640X175	LOCK WASHER 10MM
176	P0640X176	FLAT WASHER 10MM
177	P0640X177	CAP SCREW M10-1.5 X 35



Labels & Cosmetics (Front)

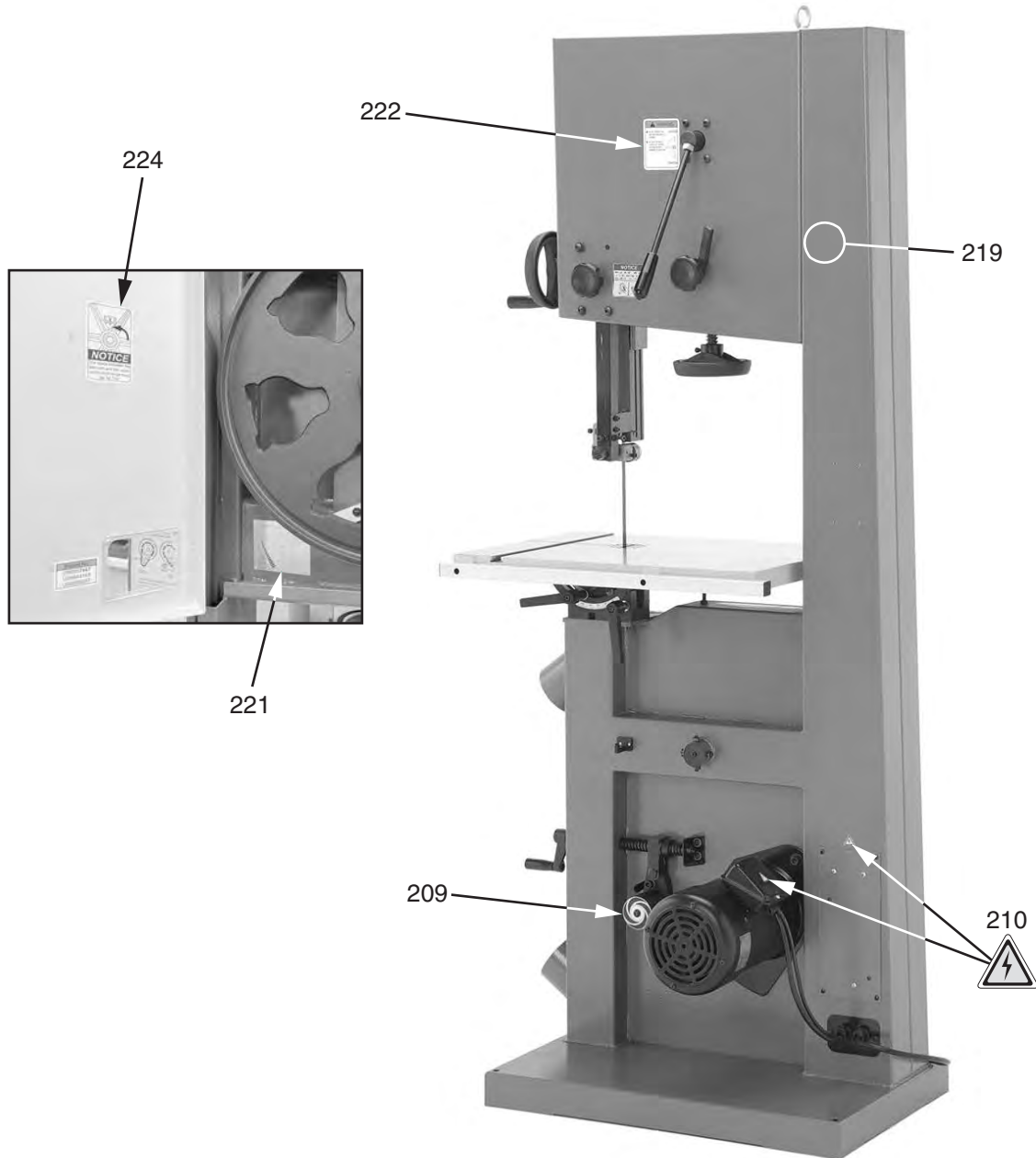


REF	PART #	DESCRIPTION
201V3	P0640X201V3	MACHINE ID LABEL V3.02.22
202	P0640X202	GRIZZLY NAMEPLATE
203V3	P0640X203V3	MODEL NUMBER LABEL V3.02.22
204	P0640X204	GLASSES RESPIRATOR LABEL
205	P0640X205	GUIDE POST ADJUSTMENT LABEL
206	P0640X206	DOOR CLOSED LABEL
207	P0640X207	DISCONNECT POWER LABEL
208	P0640X208	HANDLE CRANK DIRECTION LABEL
211	P0640X211	FIRE HAZARD WARNING LABEL
212	P0640X212	CUTTING SPEED LABEL

REF	PART #	DESCRIPTION
213V2	P0640X213V2	CONTROLS LABEL V2.02.22
214V2	P0640X214V2	SPEED DISPLAY LABEL V2.02.22
215	P0640X215	BELT CHANGE LABEL
216	P0640X216	BLADE TENSION LABEL
217	P0640X217	UNSTABLE WORKPIECE LABEL
218	P0640X218	READ MANUAL LABEL
220	P0640X220	TOUCH-UP PAINT, GRIZZLY PUTTY
223	P0640X223	GUIDE POST SCALE
225	P0640X225	EXTREME SERIES NAMEPLATE
226V2	P0640X226V2	GRIZZLY.COM LABEL V2.02.22



Labels & Cosmetics (Rear)



REF	PART #	DESCRIPTION
209	P0640X209	SPIRAL INDICATOR LABEL
210	P0640X210	ELECTRICITY LABEL
219	P0640X219	TOUCH-UP PAINT, GRIZZLY GREEN

REF	PART #	DESCRIPTION
221	P0640X221	BLADE TENSION SCALE LABEL
222	P0640X222	BLADE TENSIONING LEVER LABEL
224	P0640X224	TENSION ADJUSTMENT LABEL

WARNING

Safety labels help reduce the risk of serious injury caused by machine hazards. If any label comes off or becomes unreadable, the owner of this machine **MUST** replace it in the original location before resuming operations. For replacements, contact (800) 523-4777 or www.grizzly.com.

