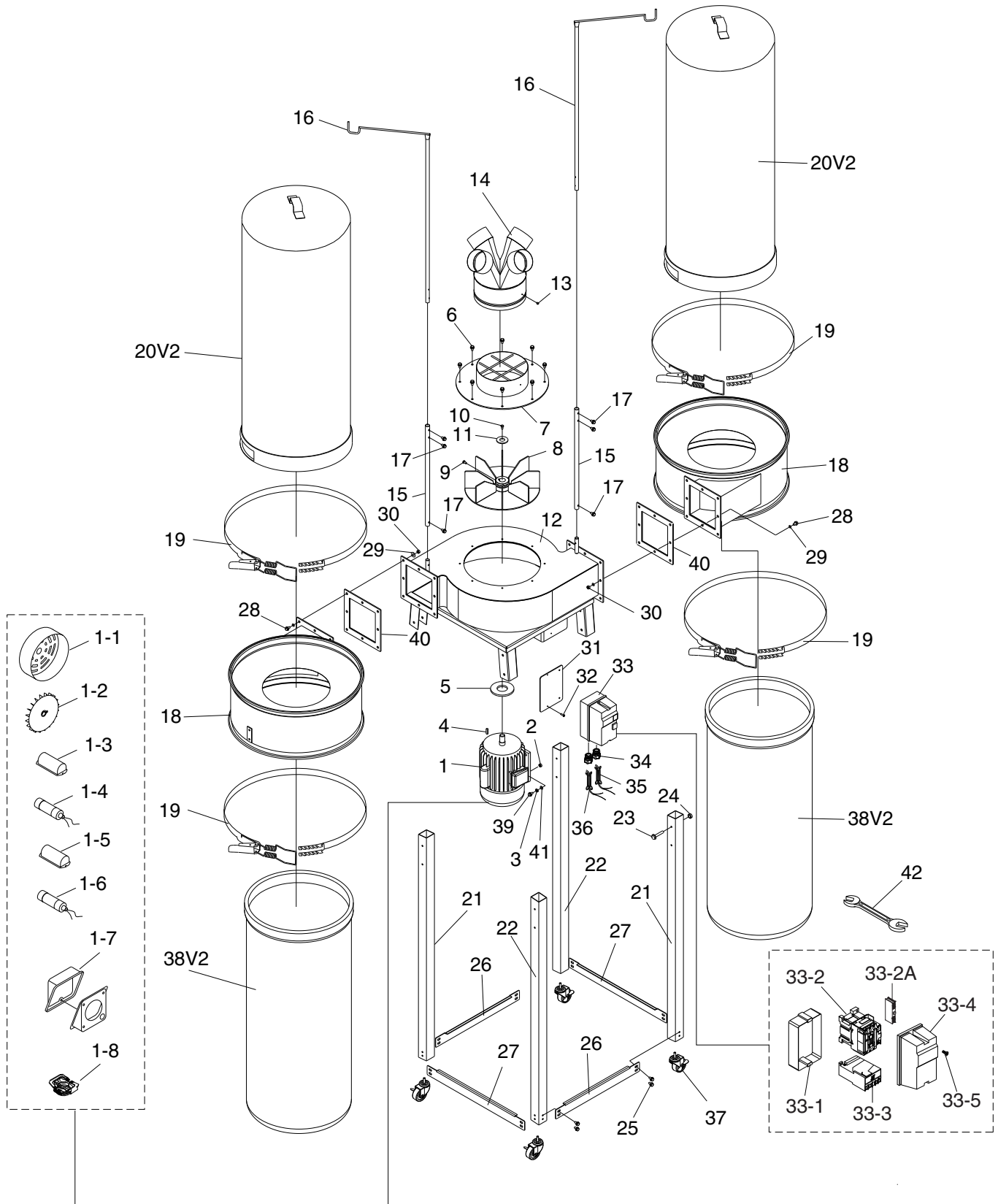


SECTION 10: PARTS

G0671 Parts Breakdown



G0671 Parts List

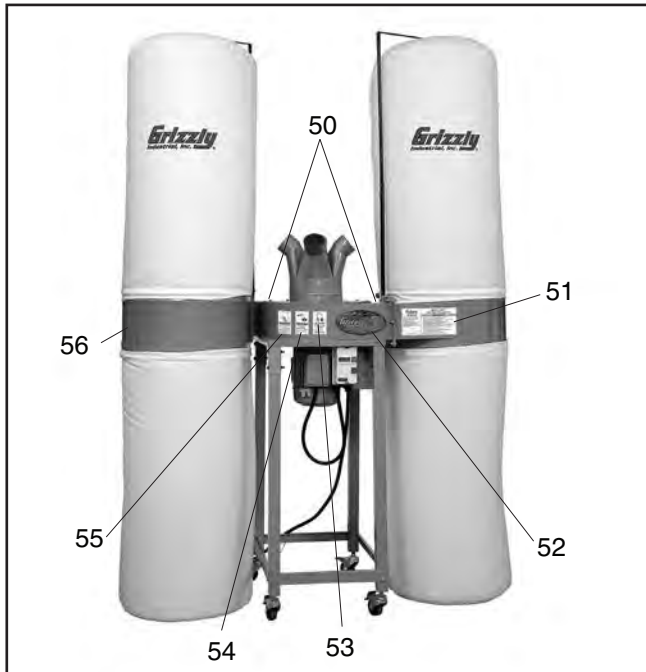
REF PART #	DESCRIPTION
1	P0671001 MOTOR 4HP, 220V, 1 PH
1-1	P0671001-1 FAN COVER
1-2	P0671001-2 FAN
1-3	P0671001-3 S CAPACITOR COVER
1-4	P0671001-4 S CAPACITOR 600M 250V X 1-3/4 X 3-7/8
1-5	P0671001-5 R CAPACITOR COVER
1-6	P0671001-6 R CAPACITOR 50M 300V X 1-3/4 X 2-3/4
1-7	P0671001-7 JUNCTION BOX
1-8	P0671001-8 CENTRIFUGAL SWITCH
2	P0671002 HEX NUT 3/8-16
3	P0671003 LOCK WASHER 3/8
4	P0671004 KEY 6 X 6 X 25
5	P0671005 MOTOR GASKET
6	P0671006 HEX BOLT 5/16-18 X 3/4
7	P0671007 INLET COVER
8	P0671008 IMPELLER 14-1/2"
9	P0671009 HEX BOLT 3/8-16 X 1/2
10	P0671010 CAP SCREW M6-1 X 20
11	P0671011 FLAT WASHER 6MM
12	P0671012 COLLECTOR HOUSING
13	P0671013 PHLP HD SCR 10-24 X 3/8
14	P0671014 INLET ADAPTER
15	P0671015 BAG HANGER LOWER SUPPORT
16	P0671016 BAG HANGER
17	P0671017 HEX BOLT 1/4-20 X 1/2
18	P0671018 COLLECTOR DRUM
19	P0671019 BAG CLAMP
20V2	P0671020V2 FILTER BAG 2.5 MICRON 23-5/8" X 47-1/4" V2.07.15

REF PART #	DESCRIPTION
21	P0671021 RIGHT LEG
22	P0671022 LEFT LEG
23	P0671023 HEX BOLT 5/16-18 X 2-1/2
24	P0671024 HEX NUT 5/16-18
25	P0671025 HEX BOLT 5/16-18 X 1/2
26	P0671026 F/R LEG BRACE
27	P0671027 L/R LEG BRACE
28	P0671028 HEX BOLT 5/16-18 X 1
29	P0671029 FLAT WASHER 5/16
30	P0671030 HEX NUT 5/16-18
31	P0671031 MAGNETIC SWITCH PLATE
32	P0671032 PHLP HD SCR 10-24 X 1/2
33	P0671033 MAGNETIC SWITCH
33-1	P0671033-1 MAG SWITCH BACK COVER
33-2	P0671033-2 CONTACTOR SDE MP-15 220V
33-2A	P0671033-2A AUXILIARY CONTACTOR SWITCH
33-3	P0671033-3 OL RELAY SDE RA-30 21-35
33-4	P0671033-4 MAG SWITCH FRONT COVER
33-5	P0671033-5 PLASTIC COVER SCREW 11/32-16 X 3/4
34	P0671034 STRAIN RELIEF
35	P0671035 MOTOR CORD 12AWG X 3C
36	P0671036 POWER CORD 12AWG X 3C
37	P0671037 CASTER WITH BRAKE
38V2	P0671038V2 LOWER DUST BAG 23-5/8" X 54" V2.07.15
39	P0671039 HEX BOLT 3/8-16 X 1-1/4
40	P0671040 RUBBER GASKET
41	P0671041 FLAT WASHER 3/8
42	P0671042 COMBO WRENCH 10 X 12MM

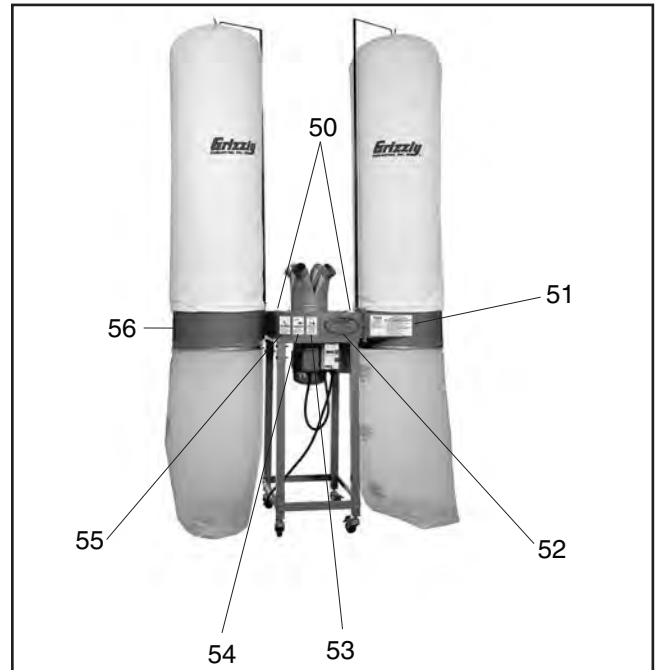


Label Placement

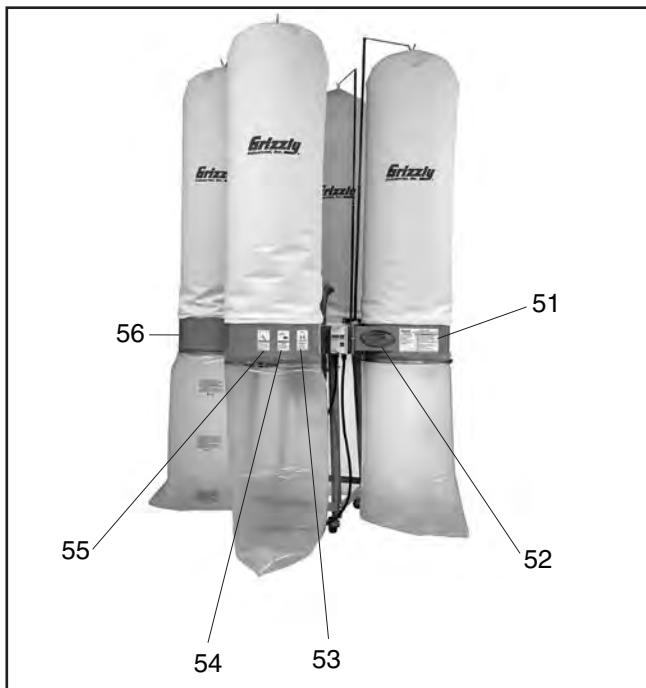
G0671



G0672



G0673



REF PART # DESCRIPTION

REF	PART #	DESCRIPTION
50	P0671050	HANDS INLET WARNING (G0671, G0672)
51	P0671051	MACHINE ID LABEL (G0671)
51	P0672051	MACHINE ID LABEL (G0672)
51	P0673051	MACHINE ID LABEL (G0673)
52	P0671052	GRIZZLY NAMEPLATE (G0671, G0672)
52	P0673052	GRIZZLY NAMEPLATE (G0673)
53	P0671053	EAR PROTECTION 2" X 3-5/16"H
54	P0671054	GLASSES/RESPIRATOR
55	P0671055	READ MANUAL-VERTICAL NS 7/05
56	P0671056	GRIZZLY GREEN TOUCH-UP PAINT

⚠️ WARNING

Safety labels warn about machine hazards and ways to prevent injury. The owner of this machine **MUST** maintain the original location and readability of the labels on the machine. If any label is removed or becomes unreadable, **REPLACE** that label before using the machine again. Contact Grizzly at (800) 523-4777 or www.grizzly.com to order new labels.

