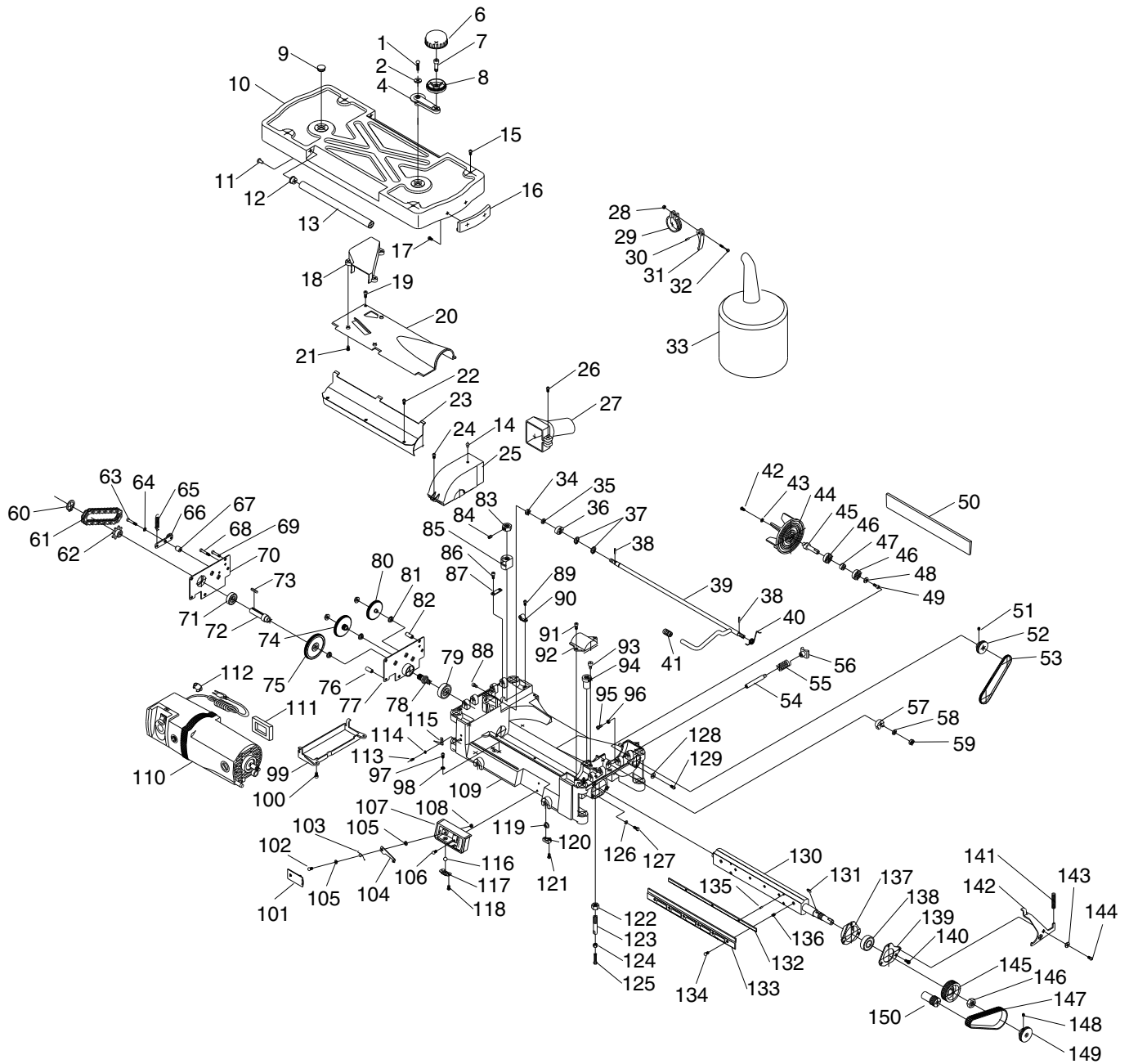


# SECTION 8: PARTS

## Main Parts Breakdown



# Main Parts List

REF	PART #	DESCRIPTION
1	PSBS05M	BUTTON HD CAP SCR M6-1 X 20
2	PW03M	FLAT WASHER 6MM
3	P0689003	SIDE COVER (RH)
4	P0689004	HANDLE
5	P0689005	STEP KNOB
6	P0689006	HANDLE CAP
7	P0689007	HANDLE BOLT
8	P0689008	HANDLE BASE
9	P0689009	PLUG
10	P0689010	UPPER COVER
11	P0689011	CLEVIS PIN
12	P0689012	BUSHING
13	P0689013	ROLLER
14	P0689014	PLUG
15	PSBS03M	BUTTON HD CAP SCR M8-1.25 X 16
16	P0689016	GRIP
17	PHTEK14M	TAP SCREW M4 X 6
18	P0689018	AIR GUIDE
19	PSB50M	CAP SCREW M5-.8 X 10
20	P0689020	DUST GUARD
21	PHTEK15M	TAP SCREW M4 X 10
22	PSB50M	CAP SCREW M5-.8 X 10
23	P0689023	DUST CHUTE
24	PSB50M	CAP SCREW M5-.8 X 10
25	P0689025	FAN COVER
26	PSBS21M	BUTTON HD CAP SCR M6-1 X 25
27	P0689027	COLLECTOR TUBE
28	PN01M	HEX NUT M6-1
29	P0689029	CLAMP
30	PRP03M	ROLL PIN 5 X 20
31	P0689031	CLAMP LEVER
32	P0689032	SPECIAL BOLT M6-1 X 20
33	P0689033	DUST COLLECTION BAG
34	PN03M	HEX NUT M8-1.25
35	PLW04M	LOCK WASHER 8MM
36	P0689036	CAM (LEFT)
37	PR16M	EXT RETAINING RING 9MM

REF	PART #	DESCRIPTION
38	P0689038	SPECIAL PIN
39	P0689039	LOCK LEVER
40	P0689040	TORSION SPRING
41	P0689041	LOCK LEVER CAP
42	PSBS09M	BUTTON HD CAP SCR M6-1 X 12
43	PW03M	FLAT WASHER 6MM
44	P0689044	FAN
45	P0689045	FAN SHAFT
46	P6000	BALL BEARING 6000ZZ
47	P0689047	IMPELLER SPACER (INNER)
48	P0689048	IMPELLER SPACER (OUTER)
49	PSB50M	CAP SCREW M5-.8 X 10
50	P0689050	DEFLECTOR COVER
51	PSS02M	SET SCREW M6-1 X 6
52	P0689052	FAN PULLEY
53	P0689053	IMPELLER BELT 135J2
54	P0689054	ROD
55	P0689055	COMPRESSION SPRING
56	P0689056	PAD
57	P0689057	CAM (RIGHT)
58	PLW04M	LOCK WASHER 8MM
59	PN03M	HEX NUT M8-1.25
60	PR58M	EXT RETAINING RING 24MM
61	P0689061	CHAIN
62	P0689062	SPROCKET
63	PSB15M	CAP SCREW M5-.8 X 20
64	PW02M	FLAT WASHER 5MM
65	P0689065	TENSION SPRING
66	P0689066	TENSION WHEEL ASSY
67	P0689067	SPACER
68	PSB95M	CAP SCREW M5-.8 X 30
69	PSB79M	CAP SCREW M5-.8 X 35
70	P0689070	OUTSIDE COVER
71	P6002	BALL BEARING 6002ZZ
72	P0689072	SHAFT
73	PK48M	KEY 4 X 4 X 20
74	P0689074	GEAR (INTERMEDIATE) 58T X 12T



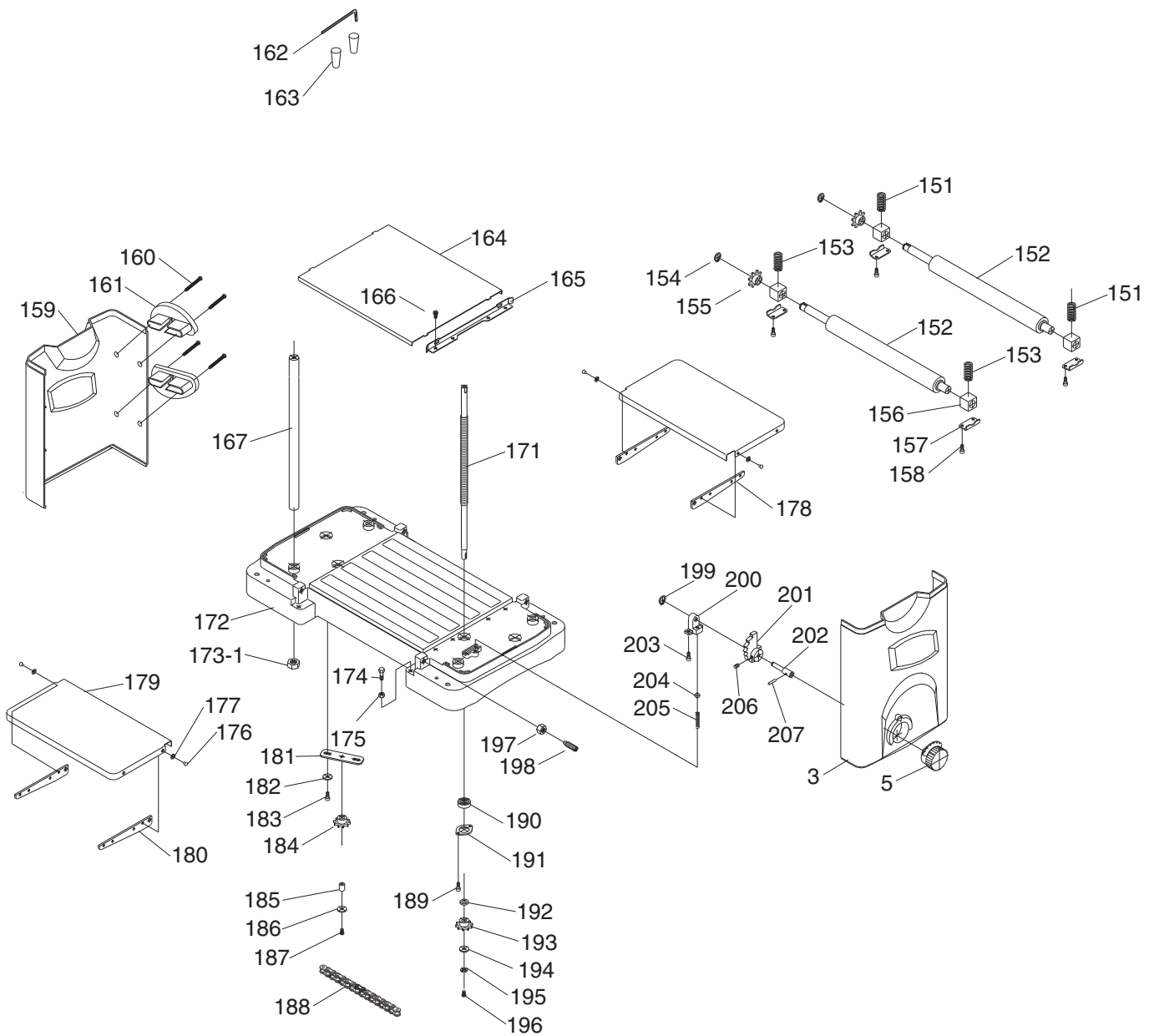
# Main Parts List (Continued)

REF	PART #	DESCRIPTION
75	P0689075	GEAR (LARGE) 70T
76	P0689076	BRACKET STANDOFF
77	P0689077	INSIDE COVER
78	P0689078	PINION GEAR
79	P6202	BALL BEARING 6202ZZ
80	P0689080	GEAR (SMALL) 52T X 12T
81	P0689081	BUSHING
82	P0689082	SPACER UNDERCUT
83	P0689083	SPECIAL NUT M14
84	PSS02M	SET SCREW M6-1 X 6
85	P0689085	ELEVATING NUT (LH)
86	PSB50M	CAP SCREW M5-.8 X 10
87	P0689087	SET PLATE
88	PSB20M	CAP SCREW M5-.8 X 14
89	P0689089	BUTTON HD CAP SCR M5-.8 X 10
90	P0689090	CABLE CLAMP
91	PSB50M	CAP SCREW M5-.8 X 10
92	P0689092	BELT GUARD
93	P0689093	SPECIAL SCREW
94	P0689094	ELEVATING NUT (RH)
95	PB148M	HEX BOLT M5-.8 X 16
96	PN06M	HEX NUT M5-.8
97	PHTEK36M	TAP SCREW M5 X 8
98	PTLW02M	EXT TOOTH WASHER 5MM
99	P0689099	COVER
100	PSB50M	CAP SCREW M5-.8 X 10
101	P0689101	POINTER COVER
102	PSBS14M	BUTTON HD CAP SCR M4-.7 X 16
103	P0689103	TORSION SPRING
104	P0689104	POINTER
105	P0689105	BUSHING
106	PSBS27M	BUTTON HD CAP SCR M4-.7 X 8
107	P0689107	POINTER HOUSING
108	PN04M	HEX NUT M4-.7
109	P0689109	UPPER FRAME
110	P0689110	MOTOR 2HP 1-PH 110V
111	P0689111	GASKET
112	PSW04-4	STRAIN RELIEF

REF	PART #	DESCRIPTION
113	PS17M	PHLP HD SCR M4-.7 X 6
114	PW05M	FLAT WASHER 4MM
115	P0689115	POINTER
116	P0689116	STEEL BALL 12MM
117	P0689117	RETAINING PLATE
118	PHTEK30M	TAP SCREW M3 X 6
119	P0689119	MAGNET
120	P0689120	MAGNET SEAT
121	PFH07M	FLAT HD SCR M5-.8 X 10
122	PN02M	HEX NUT M10-1.5
123	P0689123	STEP ROD
124	PN06M	HEX NUT M5-.8
125	PB148M	HEX BOLT M5-.8 X 16
126	PW01M	FLAT WASHER 8MM
127	PSB31M	CAP SCREW M8-1.25 X 25
128	PW02M	FLAT WASHER 5MM
129	PSB50M	CAP SCREW M5-.8 X 10
130	P0689130	CUTTERHEAD
131	PK10M	KEY 5 X 5 X 12
132	P0689132	KNIVES
133	P0689133	KNIFE LOCK BAR
134	PSB115M	BUTTON HD CAP SCR M6-1 X 16
135	P0689135	CUTTERHEAD PIN
136	P0689136	COMPRESSION SPRING
137	P0689137	BEARING RETAINER
138	PR4AZZ	BALL BEARING 6204
139	P0689139	BEARING COVER
140	PSB33M	CAP SCREW M5-.8 X 12
141	P0689141	COMPRESSION SPRING
142	P0689142	CUTTERHEAD LOCK
143	P0689143	LOCK SPACER
144	PSB50M	CAP SCREW M5-.8 X 10
145	P0689145	CUTTERHEAD PULLEY
146	PN13M	HEX NUT M16-2
147	P0689147	BELT 135J6
148	PSS02M	SET SCREW M6-1 X 6
149	P0689149	CUTTERHEAD EXTEND PULLEY
150	P0689150	MOTOR PULLEY



# Base Parts Breakdown

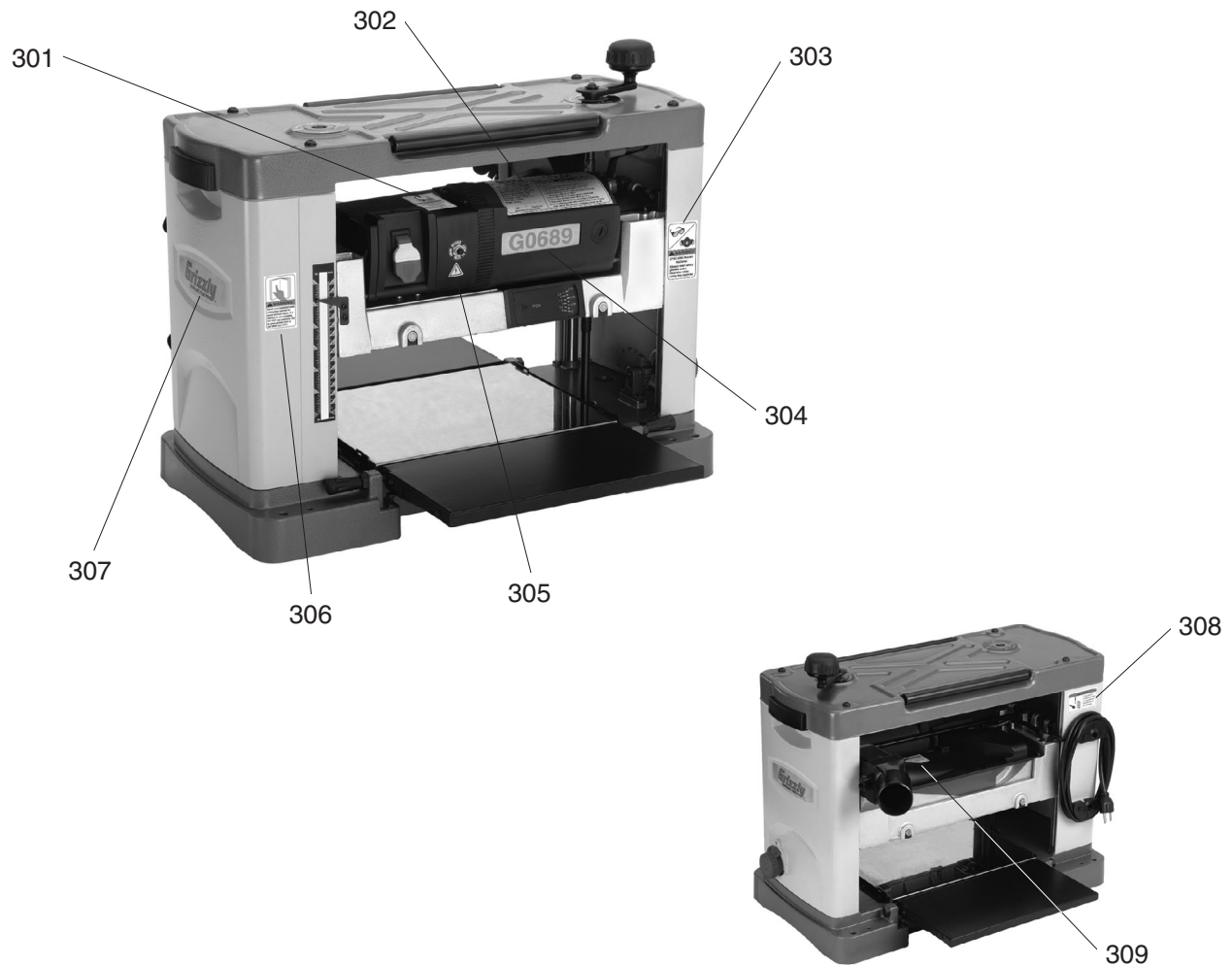


# Base Parts List

REF	PART #	DESCRIPTION
151	P0689151	COMPRESSION SPRING
152	P0689152	ROLLER
153	P0689153	COMPRESSION SPRING (INFEED)
154	PR05M	EXT RETAINING RING 15MM
155	P0689155	SPROCKET
156	P0689156	BEARING BLOCK
157	P0689157	RETAINER
158	PSB50M	CAP SCREW M5-.8 X 10
159	P0689159	SIDE COVER (LH)
160	PHTEK16M	TAP SCREW M5 X 25
161	P0689161	CORD SPOOL
162	PAW04M	HEX WRENCH 4MM
163	P0689163	MAGNET
164	P0689164	PLATEN
165	P0689165	GUIDE
166	PSB50M	CAP SCREW M5-.8 X 10
167	P0689167	COLUMN
171	P0689171	ELEVATING SCREW
172	P0689172	BASE
173-1	P0689173-1	SPECIAL NUT
174	PB08M	HEX BOLT M6-1 X 20
175	PN01M	HEX NUT M6-1
176	PFH27M	FLAT HD SCR M4-.7 X 6
177	PW05M	FLAT WASHER 4MM
178	P0689178	TABLE SUPPORT
179	P0689179	EXTENSION TABLE
180	P0689180	ROLLER PLATE (RIGHT)

REF	PART #	DESCRIPTION
181	P0689181	IDLER BRACKET
182	PW02M	FLAT WASHER 5MM
183	PSB33M	CAP SCREW M5-.8 X 12
184	P0689184	SPROCKET
185	P0689185	SPACER
186	PW03M	FLAT WASHER 6MM
187	PSBS05M	BUTTON HD CAP SCR M6-1 X 20
188	P0689188	CHAIN
189	PFB08M	FLANGE BOLT M5-.8 X 10
190	P6000	BALL BEARING 6000ZZ
191	P0689191	BEARING RETAINER
192	P0689192	SPINDLE WASHER
193	P0689193	SPROCKET
194	PW05M	FLAT WASHER 4MM
195	P0689195	SPACER
196	PSBS26M	BUTTON HD CAP SCR M4-.7 X 12
197	PN02M	HEX NUT M10-1.5
198	P0689198	SPECIAL ADJUSTER SCREW
199	PR39M	EXT RETAINING RING 8MM
200	P0689200	STEP BRACKET
201	P0689201	STEP
202	P0689202	SHAFT
203	PSB24M	CAP SCREW M5-.8 X 16
204	P0689204	STEEL BALL 6MM
205	P0689205	COMPRESSION SPRING
206	PSS02M	SET SCREW M6-1 X 6
207	PRP01M	ROLL PIN 4 X 18

# Warning Labels Breakdown and List



REF	PART #	DESCRIPTION
301	PLABEL-15B	HEARING PROTECTION LABEL VS
302	P0689302	MACHINE ID LABEL
303	PLABEL-57A	GLASSES/RESPIRATOR LABEL VS
304	P0689304	MODEL NUMBER LABEL
305	PLABEL-14A	ELECTRICITY LABEL 0.7"

REF	PART #	DESCRIPTION
306	PLABEL-12C	READ MANUAL LABEL VS
307	P0689307	GRIZZLY LOGO LABEL
308	PLABEL-62C	DISCONNECT POWER LABEL HS
309	P0689309	REMOVE COVER LABEL

## **⚠️ WARNING**

Safety labels warn about machine hazards and ways to prevent injury. The owner of this machine **MUST** maintain the original location and readability of the labels on the machine. If any label is removed or becomes unreadable, **REPLACE** that label before using the machine again. Contact Grizzly at (800) 523-4777 or [www.grizzly.com](http://www.grizzly.com) to order new labels.

