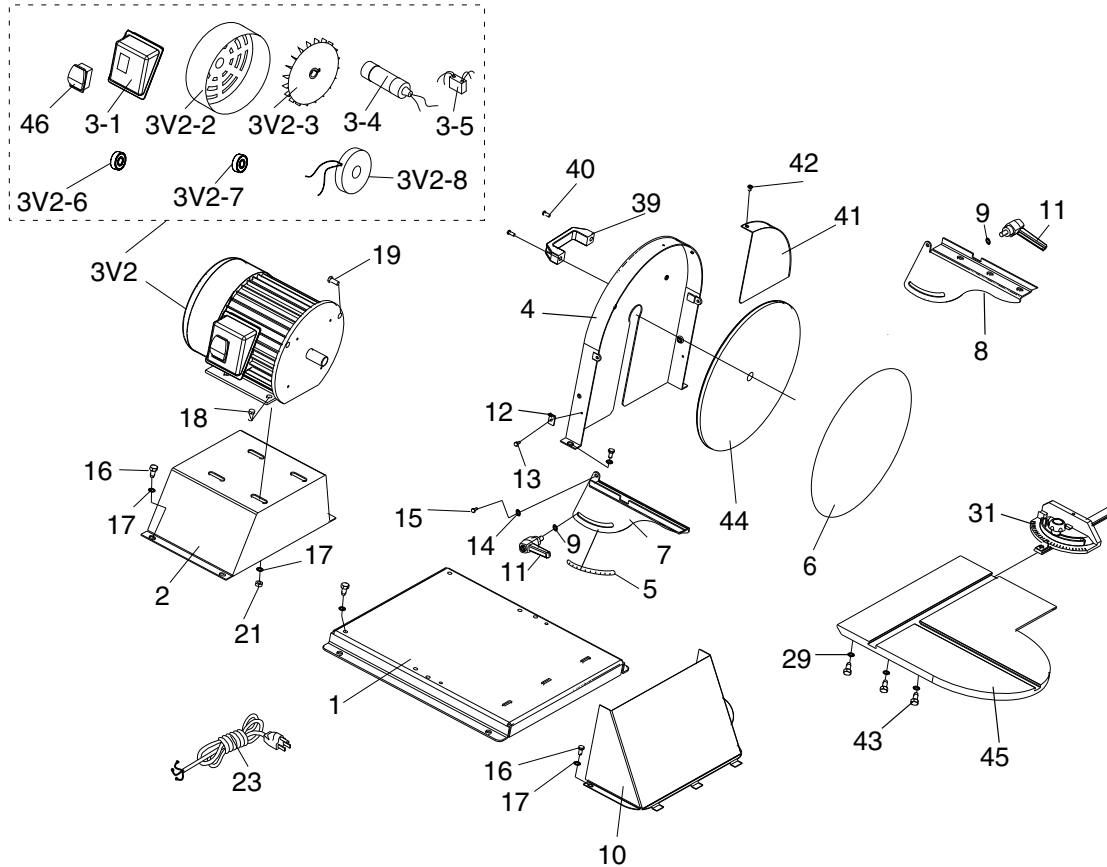


SECTION 9: PARTS

Main Breakdown and Parts List

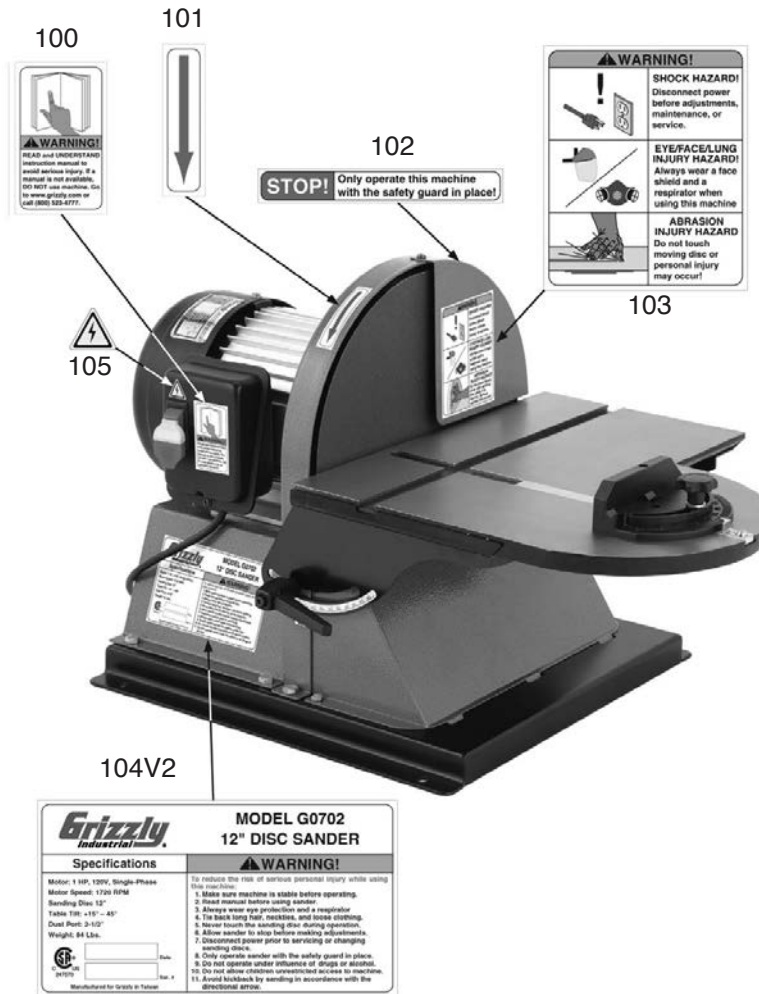


REF	PART #	DESCRIPTION
1	P0702001	MACHINE BASE
2	P0702002	MOTOR BASE
3V2	P0702003V2	MOTOR 1HP 120V 1-PH V2.01.12
3V2-1	P0702003V2-1	ELECTRICAL BOX COVER V2.01.12
3V2-2	P0702003V2-2	MOTOR FAN COVER V2.01.12
3V2-3	P0702003V2-3	MOTOR FAN V2.01.12
3V2-4	PC300B	S. CAPACITOR 300M 125V 1-3/4 X 3-3/8
3V2-5	P0702003V2-5	REGULATOR TYPE CS-021
3V2-6	P6205ZZ	BALL BEARING 6205ZZ
3V2-7	P6203ZZ	BALL BEARING 6203ZZ
3V2-8	P0702003V2-8	MOTOR BRAKE MCN CS-02-CS
4	P0702004	DISC HOUSING
5	P0702005	ADHESIVE SCALE
6	P0702006	ADHESIVE 12" SANDING DISC 100 GRIT
7	P0702007	LEFT TRUNNION
8	P0702008	RIGHT TRUNNION
9	P0702009	FLAT WASHER 8MM
10	P0702010	DUST HOOD
11	P0702011	ADJUSTABLE HANDLE M8-1.25 x 15
12	P0702012	TRUNNION SCALE POINTER

REF	PART #	DESCRIPTION
13	PS07M	PHLP HD SCR M4-.7 X 8
14	PLW03M	LOCK WASHER 6MM
15	PS03M	PHLP HD SCR M6-1 X 8
16	PS14M	PHLP HD SCR M6-1 X 12
17	PW03M	FLAT WASHER 6MM
18	PS32M	PHLP HD SCR M8-1.25 X 25
19	PS04M	PHLP HD SCR M8-1.25 X 20
21	PN03M	HEX NUT M8-1.25
23	PWRCRD110L	POWER CORD 16AWG X 3C X 73"L
29	PW03M	FLAT WASHER 6MM
31	P0702031	MITER GAUGE ASSEMBLY
39	P0702039	LIFTING HANDLE
40	PCAP02M	CAP SCREW M6-1 X 20
41	P0702041	SAFETY GUARD
42	PS05M	PHLP HD SCR M5-.8 X 8
43	PB02M	HEX BOLT M6-1 X 12
44	P0702044	CAST IRON DISC
45	P0702045	TABLE
46V2	G8988	GRIZZLY SAFETY PADDLE SWITCH



Label Parts List



REF	PART #	DESCRIPTION
100	PLABEL-12C	READ MANUAL LABEL
101	P0702101	ARROW LABEL
102	P0702102	GUARD WARNING LABEL

REF	PART #	DESCRIPTION
103	P0702103	COMBO WARNING LABEL
104V2	P0702104V2	MACHINE ID LABEL CSA V2.11.11
105	PLABEL-14B	ELECTRICITY LABEL

⚠ WARNING

Safety labels help reduce the risk of serious injury caused by machine hazards. If any label comes off or becomes unreadable, the owner of this machine **MUST** replace it in the original location before resuming operations. For replacements, contact (800) 523-4777 or www.grizzly.com.

