

Grizzly *Industrial, Inc.*®

COMBINATION SANDER

MODEL G1013

PARTS LIST



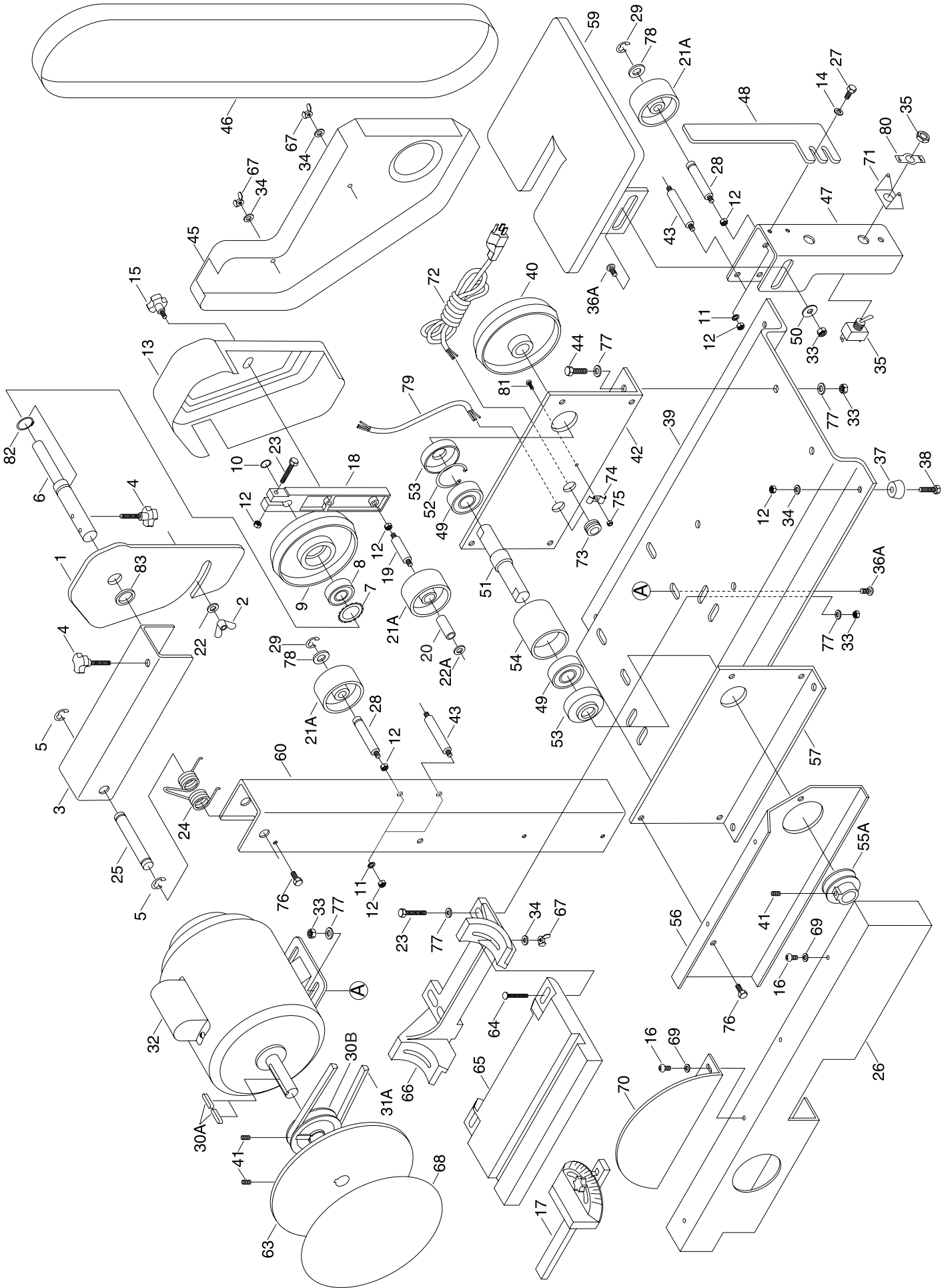
COPYRIGHT © 1991 BY GRIZZLY INDUSTRIAL, INC.

WARNING: NO PORTION OF THIS MANUAL MAY BE REPRODUCED IN ANY SHAPE OR FORM WITHOUT THE WRITTEN APPROVAL OF GRIZZLY INDUSTRIAL, INC.

REVISED FEBRUARY, 2002. PRINTED IN TAIWAN

ONLINE PARTS LIST DISCLAIMER

THESE PARTS REPRESENT THE CONFIGURATION OF THE MACHINE AS IT IS CURRENTLY BEING SHIPPED. THE MACHINE CONFIGURATION CAN CHANGE AS PRODUCT IMPROVEMENTS ARE INCORPORATED. IF YOU OWN AN EARLIER VERSION OF THE MACHINE, THIS PARTS LIST MAY NOT EXACTLY DEPICT YOUR MACHINE. CONTACT CUSTOMER SERVICE IF YOU HAVE ANY QUESTIONS ABOUT PART DIFFERENCES. PREVIOUS PARTS LIST VERSIONS ARE NOT AVAILABLE ONLINE.



PARTS LIST

REF	PART #	DESCRIPTION
1	P1013001	GUARD BACK
2	PWN01	WING NUT 10-24
3	P1013003	TOP PIVOT BRACKET
4	P1013004	KNOB BOLT ¼"-20 X 1"
5	PEC03M	E-CLIP 10mm
6	P1013006	UPPER WHEEL SHAFT
7	P1013007	SPECIAL CLIP
8	P6200	BEARING 6200-2RS
9	P1013009	TOP WHEEL
10	PR01M	SNAP RING 10mm
11	PLW02	LOCK WASHER ¼"
12	PN05	HEX NUT ¼" - 20
13	P1013013	UPPER GUARD
14	PW03M	FLAT WASHER 6mm
15	P1013015	KNOB BOLT ¼"-20 X ½"
16	PS19M	PHLP HD SCR M5 - 0.8 x 6
17	P1013017	COMPLETE MITER GAUGE
18	P1013018	TOP ARM
19	P1013019	IDLER SHAFT
20	P1013020	SLEEVE BEARING
21A	P1013021A	IDLER WHEEL
22	PW03	FLAT WASHER #10
22A	P1012022A	PLASTIC WASHER
23	PB12	HEX BOLT ⅝" - 18 x 1¼"
24	P1013024	TORSION SPRING
25	P1013025	PIVOT ARM SHAFT
26	P1013026	BELT GUARD
27	PB04M	HEX BOLT M6 - 1.0 x 10
28	P1013028	IDLER SHAFT
29	PEC07M	E-CLIP 7mm
30A	PK34M	KEY 5 x 5 x 20mm
30B	P1013030B	MOTOR PULLEY
31A	PVM30	V-BELT M-30
32	P1013032	MOTOR ½ HP
33	PN02	HEX NUT ⅝" - 18
34	PW06	FLAT WASHER ¼"
35	PSW05	SWITCH W/MOUNTING NUT
36A	PCB01	CARRIAGE BOLT ⅝"-18x ⅝"
37	P1013037	RUBBER FOOT
38	PB31	HEX BOLT ¼" - 20 x 1"
39	P1013039	BASE

REF	PART #	DESCRIPTION
40	P1013040	DRIVE WHEEL
41	PSS03	SETSCREW ¼" - 20 x ⅜"
42	P1013042	PLATE, RIGHT HAND
43	P1013043	GUARD SUPPORT
44	PB07	HEX BOLT ⅝" - 18 x ¾"
45	P1013045	LOWER GUARD
46	G1209	SANDING BELT
47	P1013047	TABLE SUPPORT
48	P1013048	BELT PLATEN
49	P6202	BEARING 6202-2RS
50	P1013050	FENDER WASHER ⅝"
51	P1013051	SHAFT
52	PR05M	SNAP RING 15mm
53	P1013053	BEARING CAP
54	P1013054	ARBOR BEARING HOUSING
55A	P1013055A	PULLEY
56	P1013056	GUARD BRACKET
57	P1013057	PLATE, LEFT HAND
59	P1013059	BELT TABLE
60	P1013060	COLUMN CHANNEL
63	P1013063	8" ALUMINUM DISC
64	PCB07	CARRIAGE BOLT ¼" - 20 x 1¼"
65	P1013065	DISC TABLE
66	P1013066	TABLE SUPPORT
67	PWN02	WING NUT ¼" - 20
68	G1212	8" SAND DISC
69	PW02M	FLAT WASHER 5mm
70	P1013070	DISC COVER
71	P1013071	SWITCH COVER
72	P1013072	POWER CORD
73	P1013073	BUSHING
74	P1013074	CORD SUPPORT
75	PN07	HEX NUT 10 - 24
76	PB02M	HEX BOLT M6-1.0 x 12
77	PW07	FLAT WASHER ⅝"
78	P1013078	RUBBER WASHER
79	P1013079	MOTOR CORD
80	P1013080	ON/OFF LABEL
81	PS08	PHLP HD SCR 10 - 24 x ¾"
82	PR03M	SNAP RING 12mm
83	P1013083	SPACER