



IMPORTS, INC.

**HUNTER'S MEAT CUTTING SAW
MODEL G1016
PARTS LIST**



COPYRIGHT © 1995 BY GRIZZLY IMPORTS, INC.

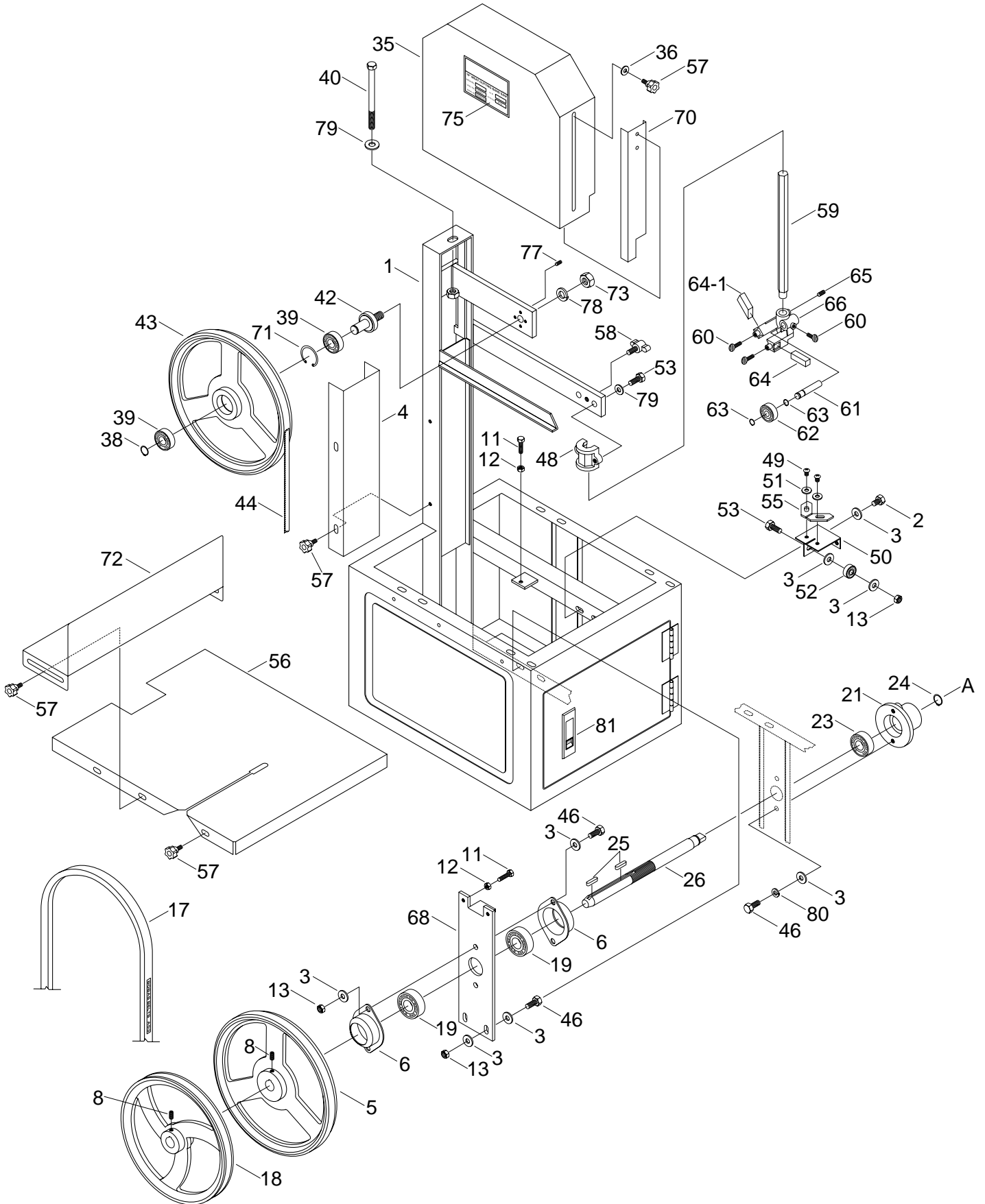
**WARNING: NO PORTION OF THIS MANUAL MAY BE REPRODUCED IN ANY SHAPE
OR FORM WITHOUT THE WRITTEN APPROVAL OF GRIZZLY IMPORTS, INC.**

JULY, 1995. PRINTED IN USA

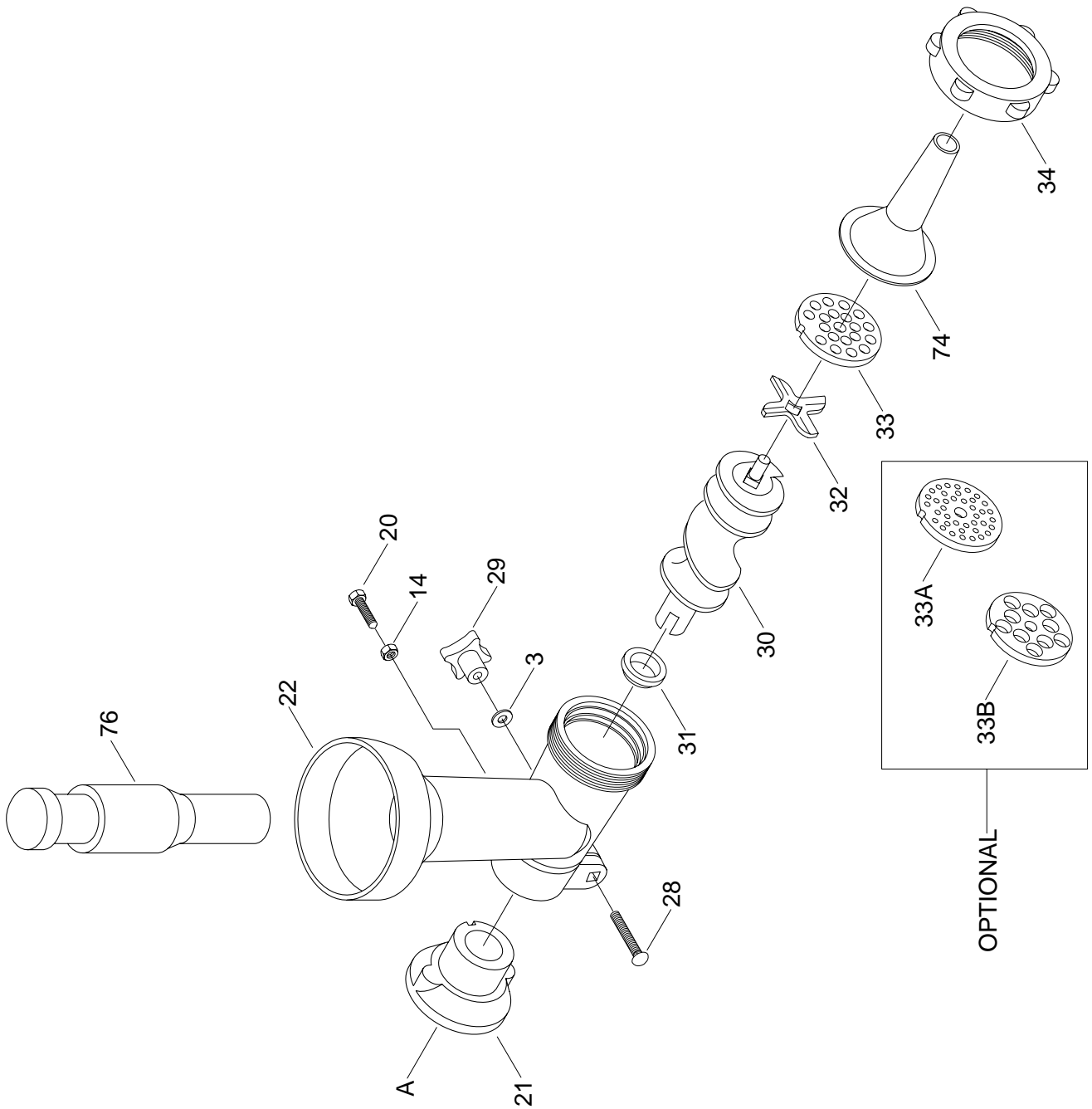
DISCONTINUED MACHINE PARTS LIST DISCLAIMER

THESE PARTS REPRESENT THE LAST CONFIGURATION OF THE MACHINE BEFORE IT WAS DISCONTINUED. MACHINE CONFIGURATIONS MAY HAVE CHANGED AS PRODUCT IMPROVEMENTS WERE INCORPORATED. IF YOU OWN AN EARLIER VERSION OF THE MACHINE, THIS PARTS LIST MAY NOT EXACTLY DEPICT YOUR MACHINE. CONTACT CUSTOMER SERVICE IF YOU HAVE ANY QUESTIONS ABOUT PART DIFFERENCES. PREVIOUS PARTS LIST VERSIONS ARE NOT AVAILABLE ONLINE.

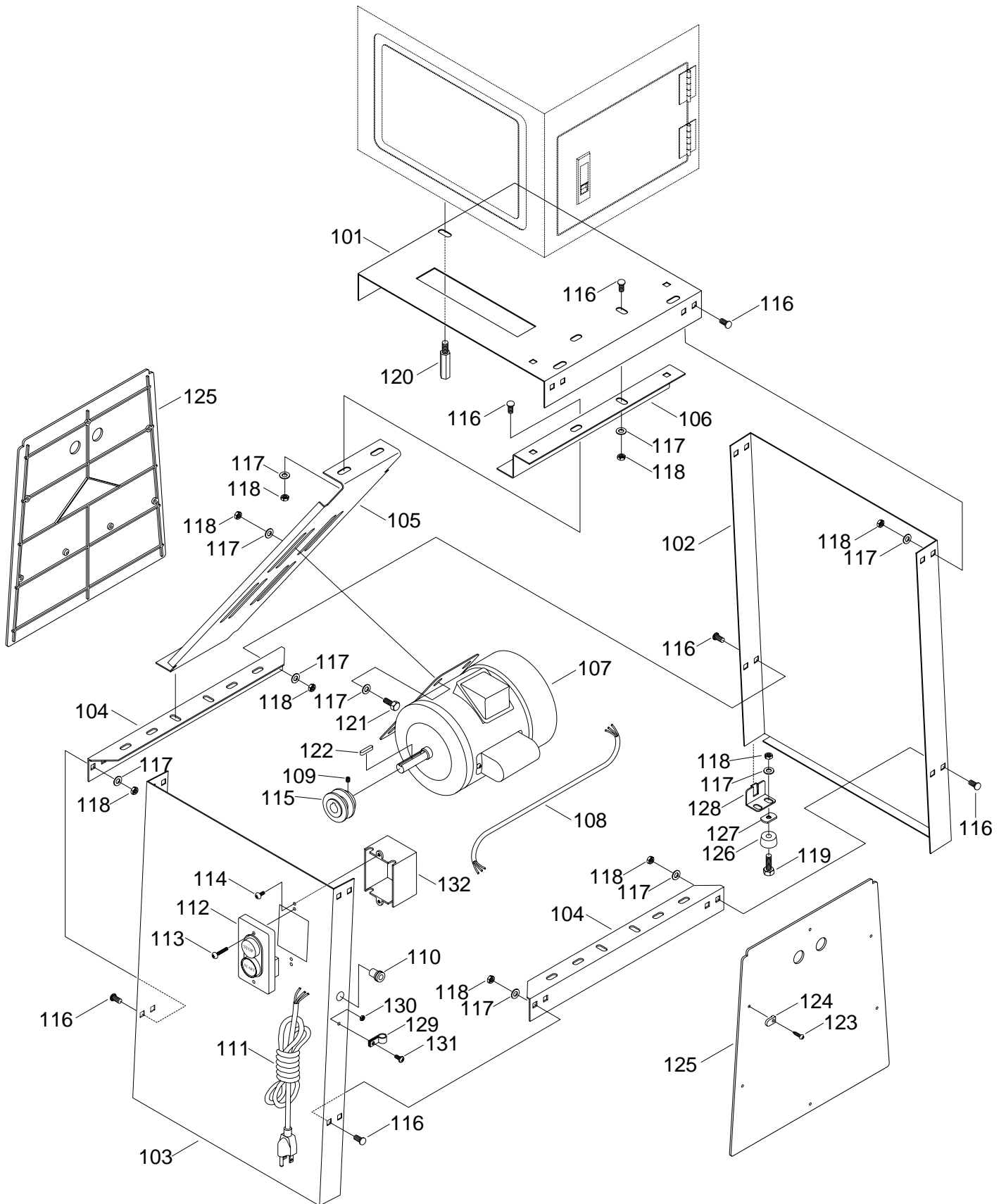
XIV. Main Parts Diagram



XV. Meat Grinder Parts Diagram



XVI. Stand Parts Diagram



XVII. Parts List

REF#	PART#	DESCRIPTION	REF#	PART#	DESCRIPTION
001	P1016001	CABINET BODY	061	P1016061	BEARING GUIDE SHAFT
002	PB09	HEX BOLT 5/16" - 18 x 1/2"	062	P6000	BEARING 6000-2RS
003	PW07	FLAT WASHER 5/16"	063	PR01M	SNAP RING 10mm
004	P1016004	COVER	064	P1016064	GUIDE BLOCK
005	P1016005	LOWER WHEEL	64-1	P1016064-1	GUIDE BLOCK
006	P1016006	BEARING MOUNT	065	PSS01M	SETSCREW M6 - 1.0 x 10
008	PSS04M	SETSCREW M6 - 1.0 x 12	066	P1016066	BLADE GUIDE COVER
011	PB08M	HEX BOLT M6 - 1.0 x 20	068	P1016068	LOWER SHAFT MOUNT
012	PN01M	HEX NUT M6 - 1.0	070	P1016070	BLADE GUARD
013	PN02	HEX NUT 5/16" - 18	071	PR21M	SNAP RING 35mm
014	PN01M	HEX NUT M6 - 1.0	072	P1016072	FENCE
017	PVA53	V-BELT A-53	073	PN06	HEX NUT 1/2" - 12
018	P1016018	PULLEY	074	P1016074	CASING TUBE
019	P6204	BEARING 6204-2RS	075	P1016075	NAME PLATE
020	PB08M	HEX BOLT M6 - 1.0 x 20	076	P1016076	PESTLE
021	P1016021	BRACKET	077	PSS05M	SETSCREW M5 - 0.8 x 10
022	P1016022	GRINDER BODY	078	PLW07	LOCK WASHER 1/2"
023	P6203	BEARING 6203-2RS	079	PW02	FLAT WASHER 3/8"
024	PR18M	SNAP RING 17mm	080	PLW01	LOCK WASHER 5/16"
025	PK01M	KEY 5 x 5 x 22mm	081	P1016081	DOOR LATCH ASSEMBLY
026	P1016026	SHAFT	101	P1016101	TOP PANEL
028	P1016028	CARR BOLT 5/16" - 18 x 1 3/4"	102	P1016102	REAR PANEL
029	P1016029	LOCK KNOB	103	P1016103	FRONT PANEL
030	P1016030	AUGER	104	P1016104	BRACE
031	P1016031	BUSHING	105	P1016105	MOTOR MOUNT PLATE
032	P1016032	BLADE	106	P1016106	AUXILIARY MOTOR BRACKET
033	P1016033	DIE (8mm)	107	P1016107	MOTOR 1HP
33A	P1016033A	DIE	108	P1016108	CORD, MOTOR TO SWITCH
33B	P1016033B	DIE	109	PSS02M	SETSCREW M6 - 1.0 x 6
034	P1016034	LOCK	110	P1016110	STRAIN RELIEF
035	P1016035	TOP WHEEL COVER	111	P1016111	POWER CORD
036	PW06	FLAT WASHER 1/4"	112	P1016112	SWITCH
038	PR02M	SNAP RING 14mm	113	PS03	PHLP HD SCREW 10 - 24 x 1"
039	P6202	BEARING 6202-2RS	114	PS06	PHLP HD SCREW 10 - 24 x 3/8"
040	PB08	HEX BOLT 3/8" - 16 x 5	115	P1016115	MOTOR PULLEY
042	P1016042	UPPER WHEEL SHAFT	116	PCB02	CARRIAGE BOLT 5/16" - 18 x 1/2"
043	P1016043	TOP BLADE WHEEL	117	PW07	FLAT WASHER 5/16"
044	G1098	SEE CATALOG	118	PN02	HEX NUT 5/16" - 18
046	PB07	HEX BOLT 5/16" - 18 x 3/4"	119	PB03	HEX BOLT 5/16" - 18 x 1"
048	P1016048	GUIDE POST BRACKET	120	P1016120	SPECIAL BOLT
049	PS07	PHLP HD SCRW 1/4" - 20 x 3/8"	121	PB07	HEX BOLT 5/16" - 18 x 3/4"
050	P1016048	GUIDE POST BRACKET	122	PK23M	KEY 5 x 5 x 25mm
051	PW06	FLAT WASHER 1/4"	123	P1016123	SCREW
052	P608	BEARING 608-2RS	125	P1016125	PLASTIC SIDE PANEL
053	PB07	HEX BOLT 5/16" - 18 x 3/4"	126	P1016126	RUBBER FOOT
055	P1016055	LOWER GUIDE	127	P1016127	KEEPER
056	P1016056	TABLE	128	P1016128	MOUNT BRACKET
057	P1016057	KNOB	129	P1016129	WIRE CLAMP
058	P1016058	LOCK KNOB	130	PN07	HEX NUT 10 - 24
059	P1016059	GUIDE POST	131	PS01	PHLP HD SCREW 10 - 24 x 1/2"
060	P1016060	THUMB SCREW	132	P1016132	SWITCH COVER