



**3/4 H.P. SHAPER
MODEL G1024
PARTS LIST**



COPYRIGHT © 1994 BY GRIZZLY INDUSTRIAL, INC.

WARNING: NO PORTION OF THIS MANUAL MAY BE REPRODUCED IN ANY SHAPE OR FORM WITHOUT THE WRITTEN APPROVAL OF GRIZZLY INDUSTRIAL, INC.

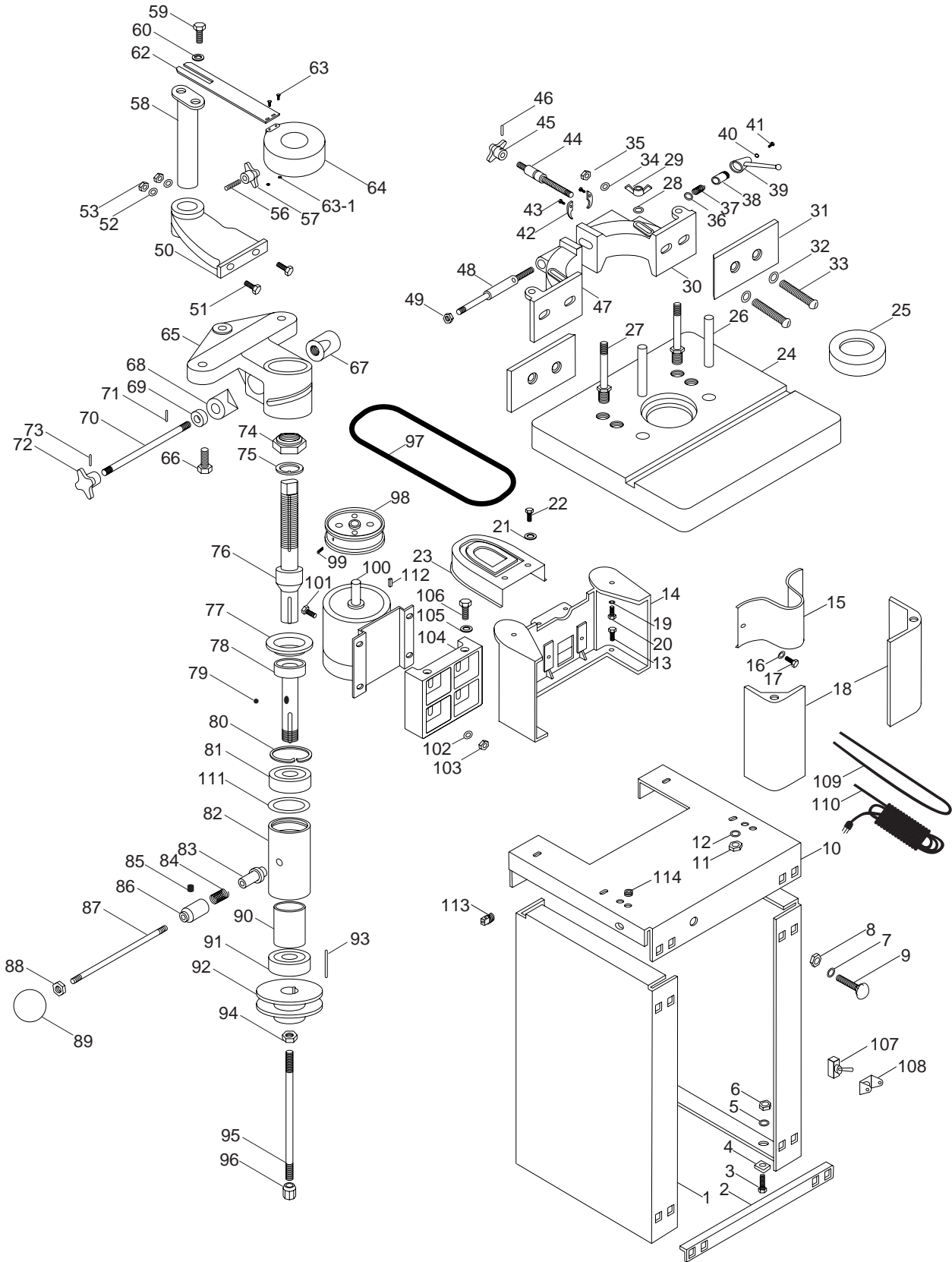
REVISED JUNE, 1994. PRINTED IN USA

DISCONTINUED MACHINE PARTS LIST DISCLAIMER

THESE PARTS REPRESENT THE LAST CONFIGURATION OF THE MACHINE BEFORE IT WAS DISCONTINUED. MACHINE CONFIGURATIONS MAY HAVE CHANGED AS PRODUCT IMPROVEMENTS WERE INCORPORATED. IF YOU OWN AN EARLIER VERSION OF THE MACHINE, THIS PARTS LIST MAY NOT EXACTLY DEPICT YOUR MACHINE. CONTACT CUSTOMER SERVICE IF YOU HAVE ANY QUESTIONS ABOUT PART DIFFERENCES. PREVIOUS PARTS LIST VERSIONS ARE NOT AVAILABLE ONLINE.

XVIII. PARTS LISTS AND DIAGRAMS

A. MAIN BODY ASSEMBLY



B. MODEL G1024 SHAPER PARTS LIST

Ref. #	Part #	Description	Ref. #	Part #	Description
001	P1022003	Side Panel	037	P1024037	Coil Spring
002	P1024002	Tie Bar	038	P1024038	Spring Collar
003	PB02M	Hex Bolt M6-1.0x12	039	P1024039	Lock Handle
004	P1024004	Rubber Foot	040	PW06	Flat Washer 1/4"
005	PW02	Flat Washer 3/8"	041	PS14M	Phil Hd Screw M6-1.0x12
006	PN01M	Hex Nut M6-1.0	042	P1024042	Half Collar
007	PW02	Flat Washer 3/8"	043	PSB26M	Cap Screw M6-1.0x12
008	PN03M	Hex Nut M8-1.25	044	P1024044	Adjusting Screw Stud
009	PCB01M	Carriage Bolt M8-1.25x20	045	P1024045	Hand Knob
010	P1024010	Shelf	046	PRP16M	Roll Pin 3x25
011	PN03M	Hex Nut M8-1.25	047	P1024047	Fence Body Left
012	PW02	Flat Washer 3/8"	048	P1024048	Clamp Stud
013	PB06M	Hex Bolt M8-1.25x12	049	PN09M	Hex Nut M12-1.75
014	P1024014	Table Support	050	P1024050	Mounting Bracket
015	P1024015	Spindle Pulley Guard	051	PB26M	Hex Bolt M8-1.25x30
016	PW02	Flat Washer 3/8"	052	PW02	Flat Washer 3/8"
017	PB03M	Hex Bolt M8-1.25x16	053	PN03M	Hex Nut M8-1.25
018	P1024018	Table Leg	056	P1024056	Stud Bolt
019	PW01	Flat Washer 1/2"	057	P1024045	Hand Knob
020	PB25M	Hex Bolt M12-1.75x25	058	P1024058	Hex Post
021	PW02	Flat Washer 3/8"	059	PB06M	Hex Bolt M8-1.25x12
022	PB06M	Hex Bolt M8-1.25x12	060	PW02	Flat Washer 3/8"
023	P1024023	Belt Guard	062	P1024062	Hold Down Bar
024	P1024024	Working Table	063	PS02M	Phil Hd Screw M4-0.7x12
025	P1024025	Table Insert	63-1	PN04M	Hex Nut M4-0.7
026	P1024026	Taper Pin	064	P1024064	See Through Ring Guard
027	P1024027	Clamp Stud	065	P1024065	Spindle Housing Bracket
028	PW07	Flat Washer 5/16"	066	PB27M	Hex Bolt M12-1.75x30
029	PWN03	Wing Nut 5/16"-18	067	P1024067	Clamp Sleeve Right
030	P1024030	Fence Body Right	068	P1024068	Clamp Sleeve Left
031	P1024031	Wooden Fence	069	P1024069	Stuff Ring
032	PW06	Flat Washer 1/4"	070	P1024070	Lock Bar
033	P1024033	Slot Head Screw	071	PRP02M	Roll Pin 3x16
034	PW07	Flat Washer 5/16"	072	P1024045	Hand Knob
035	PN03M	Hex Nut M8-1.25	073	PRP02M	Roll Pin 3x16
036	PW01	Flat Washer 1/2"	074	P1026219	Spindle Nut

B. MODEL G1024 SHAPER PARTS LIST (CONTINUED)

Ref. #	Part #	Description	Ref. #	Part #	Description
075	P1026223	Safety Washer	097	PVA30	V-belt A-30
076	P1024076	Cutter Spindle	098	P1024098	Motor Pulley
077	P1024077	Bearing Cover	099	PSS04M	Setscrew M6-1.0x12
078	P1024078	Spindle Cartridge	100	P1024100	Motor
079	P1024079	Steel Ball	101	P1024101	Carriage Bolt
080	PR23M	Retaining Ring 40mm	102	PW02	Flat Washer 3/8"
081	P6203	Ball Bearing	103	PN03M	Hex Nut M8-1.25
082	P1024082	Spindle Housing	104	P1024104	Motor Mount Plate
083	P1024083	Bearing Cone	105	PW01	Flat Washer 1/2"
084	P1024084	Coil Spring	106	PSB26M	Cap Screw M6-1.0x12
085	PSS20M	Setscrew M8-1.25x8	107	PSW05	Forward/Reverse Switch
086	P1024086	Spring Collar	108	P1024108	Switch Bracket
087	P1024087	Stud	109	P1024109	Wire Cord
088	PN09M	Hex Nut M12-1.75	110	P1024110	Wire Cord
089	P1024089	Knob	111	P1024111	Wavy Washer
090	P1024090	Collar	112	PK01M	Key 5x5x22
091	P6203	Ball Bearing	113	P1024113	Strain Relief
092	P1024092	Spindle Pulley	114	P1024113	Strain Relief
093	PRP13M	Roll Pin 3x25	115	P1024115	Reversing Switch
094	P1022124	Hex Nut 17mm			
095	P1024095	Tie Rod			
096	P1024096	Tie Rod Nut			