

# ***Grizzly*** ***Industrial, Inc.*** ®

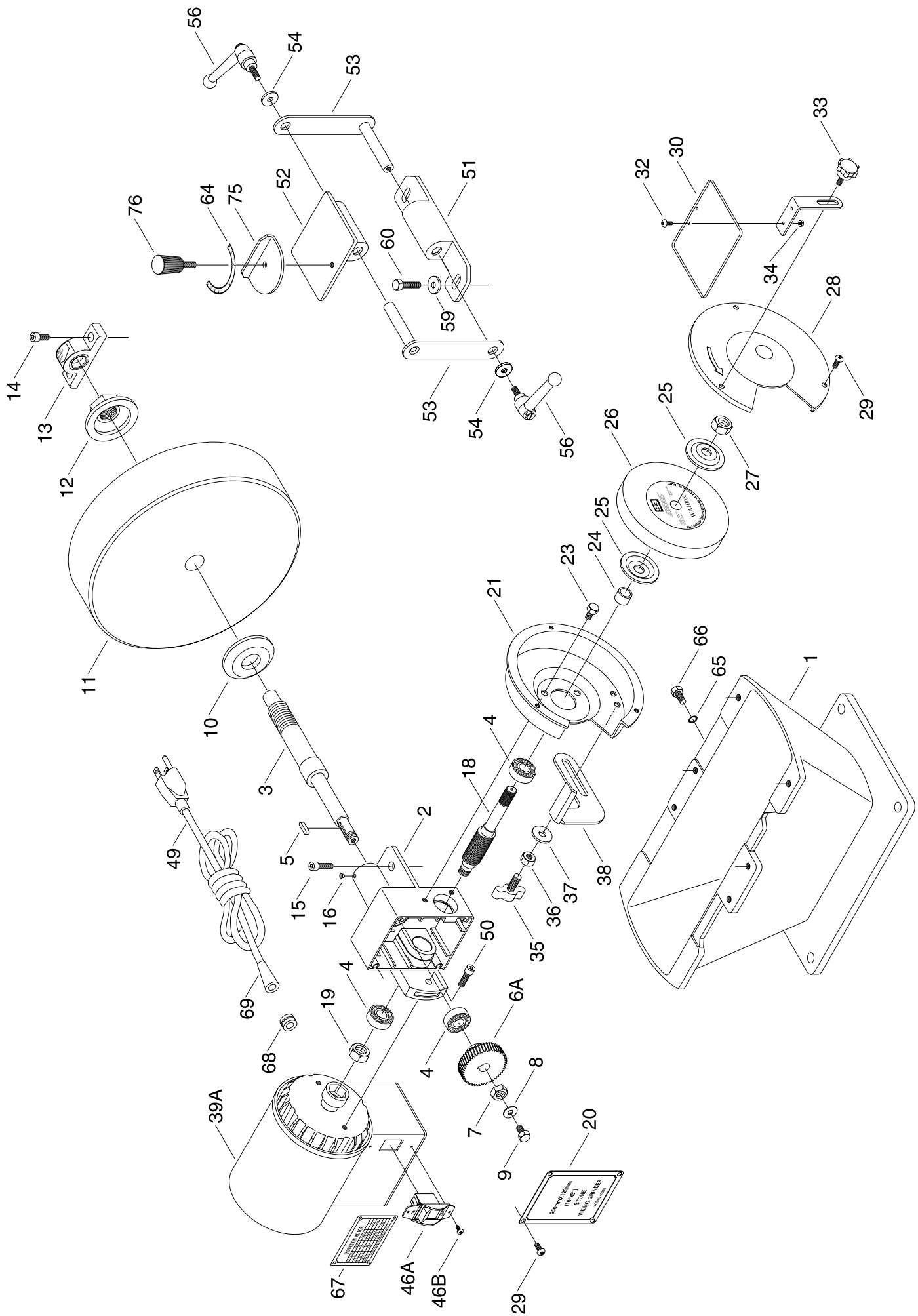
## **SLOW-SPEED GRINDER** **MODEL G1036** **PARTS LIST**



COPYRIGHT © 1993 BY GRIZZLY INDUSTRIAL, INC. REG. TX 3 627 012  
**WARNING: NO PORTION OF THIS MANUAL MAY BE REPRODUCED IN ANY SHAPE  
OR FORM WITHOUT THE WRITTEN APPROVAL OF GRIZZLY INDUSTRIAL, INC.**  
REVISED FEBRUARY, 1999. PRINTED IN U.S.A.

#### **PARTS LIST DISCLAIMER**

This parts list and drawings represent the configuration of the machine as it is currently being shipped. The machine configuration can change as product improvements are incorporated. If you own an earlier version of the machine, this parts list may not depict your machine exactly. Contact Customer Service if you have any questions about part differences. Previous parts list versions are not available on-line.



REF	PART #	DESCRIPTION
01	P1036001	BASE
02	P1036002	GEAR BOX
03	P1036003	SPINDLE
04	P6001	BEARING 6001-2RS
05	PK37M	KEY 4 X 4 X 16
06A	P1036006A	GEAR, PLASTIC
07	PN13	HEX NUT 1/2" - 13
08	PW06	WASHER 1/4"
09	PB19	HEX BOLT 1/4" - 20 X 1/2"
10	P1036010	FLANGE
11	P1036011	10" GRINDING WHEEL
12	P1036012	FLANGE
13	P1036013	GUIDE CLAMP
14	PSB04	CAP SCREW 1/4" - 20 X 1/2"
15	PSB05	CAP SCREW 1/4" - 20 X 3/4"
16	P1036016	OIL FEEDER
18	P1036018	WORM SHAFT
19	PN06	HEX NUT 1/2" - 12
20	P1036020	GEAR BOX COVER
21	P1036021	WHEEL GUARD
23	PB19	HEX BOLT 1/4" - 20 X 1/2"
24	P1036024	SPACER
25	P1036025	FLANGE
26	P1036026	GRINDING WHEEL
27	P1036027	LEFT HAND NUT, 1/2" - 13
28	P1036028	WHEEL COVER
29	PS06	SCREW 10-24 X 3/8"
30	P1036030	EYE SHIELD
31	P1036030	SHIELD BRACKET W/30
32	PS24	PHLP HD SCREW 8-32 X 3/8"

REF	PART #	DESCRIPTION
33	P1036033	KNOB
34	PN14	HEX NUT 8-32
35	P1036035	KNOB
36	PN02	HEX NUT 5/16" - 18
37	PW07	FLAT WASHER 5/16"
38	P1036038	TOOL REST
39A	P1036039A	COMPLETE MOTOR
39B	P1036039B	MOTOR FAN *
46A	P1199046A	SWITCH
46B	PHTEK1	SELF TAP PHLP SCREW
49	P1036049	POWER CORD
50	PSB05	CAP SCREW 1/4" - 20 X 3/4"
51	P1036051	TABLE BRACKET
52	P1036052	TOOL REST TABLE
53	P1036053	SUPPORT BRACKET
54	PW06	FLAT WASHER 1/4"
56	P1036056	ADJUSTABLE HANDLE
59	PW06	FLAT WASHER 1/4"
60	PB31	HEX BOLT 1/4" - 20 X 1"
64	P1036064	DEGREE SCALE
65	P1036065	DRAIN PLUG SEAL
66	P1036066	DRAIN PLUG
67	P1036067	MOTOR LABEL
68	P1036068	STRAIN RELIEF
69	P1036069	CORD PROTECTOR
70	PW03	FLAT WASHER #10
71	PS06	PHLP SCREW 10-24 X 3/8"
73	P1036073	ROTATION DIRECTION
75	P1036075	DEGREE SLIDE
76	P1036076	KNOB