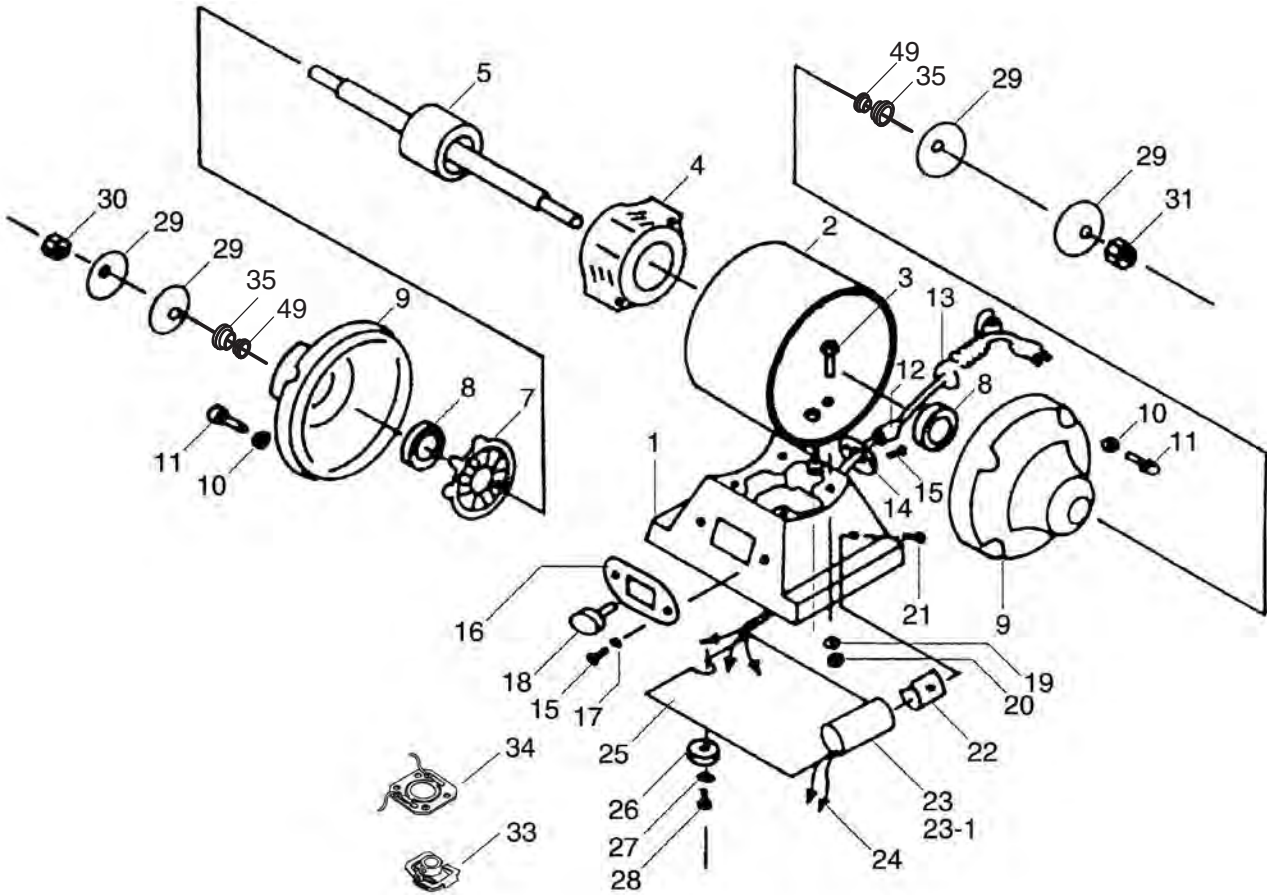


# SECTION 9: PARTS

## Main



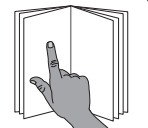

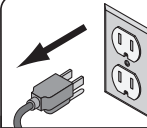

REF PART #	DESCRIPTION
1	P1061001 MOTOR BASE
2	P1061002 MOTOR CASE
3	P1061003 FLAT HD SCR 5/16-18 X 1-1/4
4	P1061004 STATOR (G1061)
4	P1061Z004 STATOR (G1061Z)
5	P1061005 ROTOR (G1061)
5	P1061Z005 ROTOR (G1061Z)
7	P1061007 MOTOR FAN
8	P1061008 BALL BEARING 6206ZZ
9	P1061009 END BELL
10	P1061010 LOCK WASHER 1/4
11	P1061011 PHLP HD SCR 1/4-20 X 5/8
12	P1061012 CORD CLAMP
13	P1061013 POWER CORD 16G X 3W 73L
14	P1061014 STRAIN RELIEF
15	P1061015 PHLP HD SCR 10-24 X 1/2
16	P1061016 SWITCH PANEL
17	P1061017 LOCK WASHER #10
18	P1061018 ON/OFF SWITCH

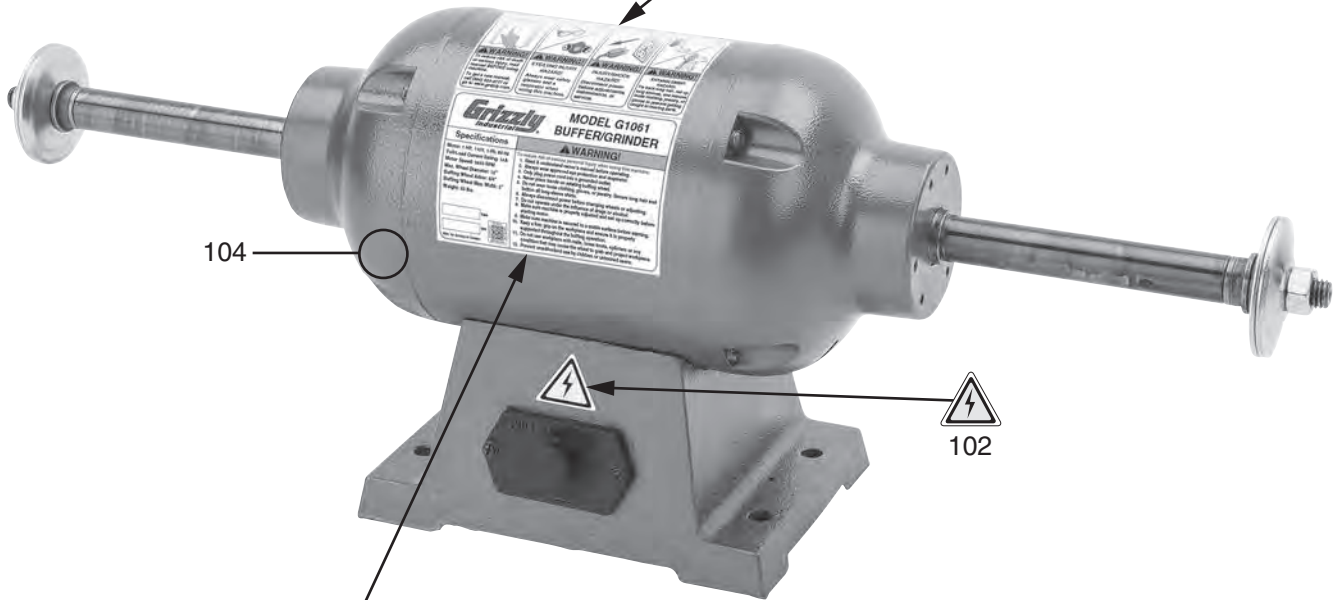
REF PART #	DESCRIPTION
19	P1061019 LOCK WASHER 5/16
20	P1061020 HEX NUT 5/16-18
21	P1061021 TAP SCREW #6 X 1/2
22	P1061022 CLAMP
23	P1061023 S CAPACITOR 400M 125V 1-3/4 X 3-3/8 (G1061Z)
23-1	P1061123-1 S CAPACITOR 300M/125V 1-3/4 X 3-3/8 (G1061)
24	P1061024 CLAMP CORD
25	P1061025 FLOOR PLATE
26	P1061026 FOOT WASHER
27	P1061027 FLAT WASHER #10
28	P1061028 PHLP HD SCR 10-24 X 1/2
29	P1061029 WHEEL FLANGE 5/8 BORE
30	P1061030 HEX NUT 5/8-11 LH
31	P1061031 HEX NUT 5/8-11 RH
33	P1061033 CENTRIFUGAL SWITCH 3450 RPM (G1061)
33	P1061033 CENTRIFUGAL SWITCH 3450 RPM (G1061)
34	P1061034 CONTACT SWITCH PLATE
35	P1061035 T-BUSHING 1 X 3/4 X 3/8
49	P1061049 T-BUSHING 3/4 X 5/8 X 5/16



# Labels & Cosmetics

101


			
<b>⚠ WARNING!</b> To reduce risk of death or serious injury, read manual <b>BEFORE</b> using machine. To get a new manual, call (800) 523-4777 or go to <a href="http://www.grizzly.com">www.grizzly.com</a> .	<b>⚠ WARNING!</b> <b>EYE/LUNG INJURY HAZARD!</b> Always wear safety glasses and a respirator when using this machine.	<b>⚠ WARNING!</b> <b>INJURY/SHOCK HAZARD!</b> Disconnect power before adjustments, maintenance, or service.	<b>⚠ WARNING!</b> <b>ENTANGLEMENT HAZARD!</b> Tie back long hair, roll up long sleeves, and remove loose clothing, jewelry, or gloves to prevent getting caught in moving parts.




104

102

103

<b>Grizzly Industrial</b>		<b>MODEL G1061 BUFFER/GRINDER</b>	
<b>Specifications</b>		<b>⚠ WARNING!</b>	
Motor: 1 HP, 115V, 1-Ph, 60 Hz Full-Load Current Rating: 14A Motor Speed: 3450 RPM Max. Wheel Diameter: 12" Buffing Wheel Arbor: 5/8" Buffing Wheel Max. Width: 2" Weight: 53 lbs.	To reduce risk of serious personal injury when using this machine: 1. Read & understand owner's manual before operating. 2. Always wear approved eye protection and respirator. 3. Only plug power cord into a grounded outlet. 4. Never place hands on rotating buffing wheel. 5. Do not wear loose clothing, gloves, or jewelry. Secure long hair and button all long-sleeve shirts. 6. Always disconnect power before changing wheels or adjusting. 7. Do not operate under the influence of drugs or alcohol. 8. Make sure machine is properly adjusted and set up correctly before starting motor. 9. Make sure machine is secured to a stable surface before starting. 10. Keep a firm grip on the workpiece and ensure it is properly supported throughout the buffing operation. 11. Do not use workpiece with nails, loose knots, splinters or any condition that may cause the wheel to grab and project workpiece. 12. Prevent unauthorized use by children or untrained users.		
<input type="text"/> Date			
<input type="text"/> S/N	Mfd. for Grizzly in Taiwan		

103

<b>Grizzly Industrial</b>		<b>MODEL G1061Z BUFFER/GRINDER</b>	
<b>Specifications</b>		<b>⚠ WARNING!</b>	
Motor: 1 HP, 115V, 1-Ph, 60 Hz Full-Load Current Rating: 14A Motor Speed: 1725 RPM Max. Wheel Diameter: 12" Buffing Wheel Arbor: 5/8" Buffing Wheel Max. Width: 2" Weight: 53 lbs.	To reduce risk of serious personal injury when using this machine: 1. Read & understand owner's manual before operating. 2. Always wear approved eye protection and respirator. 3. Only plug power cord into a grounded outlet. 4. Never place hands on rotating buffing wheel. 5. Do not wear loose clothing, gloves, or jewelry. Secure long hair and button all long-sleeve shirts. 6. Always disconnect power before changing wheels or adjusting. 7. Do not operate under the influence of drugs or alcohol. 8. Make sure machine is properly adjusted and set up correctly before starting motor. 9. Make sure machine is secured to a stable surface before starting. 10. Keep a firm grip on the workpiece and ensure it is properly supported throughout the buffing operation. 11. Do not use workpiece with nails, loose knots, splinters or any condition that may cause the wheel to grab and project workpiece. 12. Prevent unauthorized use by children or untrained users.		
<input type="text"/> Date			
<input type="text"/> S/N	Mfd. for Grizzly in Taiwan		

REF	PART #	DESCRIPTION
101	P1061101	4-WAY WARNING LABEL
102	P1061102	ELECTRICITY WARNING LABEL
103	P1061103	MACHINE ID LABEL (G1061)

REF	PART #	DESCRIPTION
103	P1061Z103	MACHINE ID LABEL (G1061Z)
104	P1061104	TOUCH-UP PAINT, GRIZZLY GREEN

## ⚠ WARNING

Safety labels help reduce the risk of serious injury caused by machine hazards. If any label comes off or becomes unreadable, the owner of this machine **MUST** replace it in the original location before resuming operations. For replacements, contact (800) 523-4777 or [www.grizzly.com](http://www.grizzly.com).

