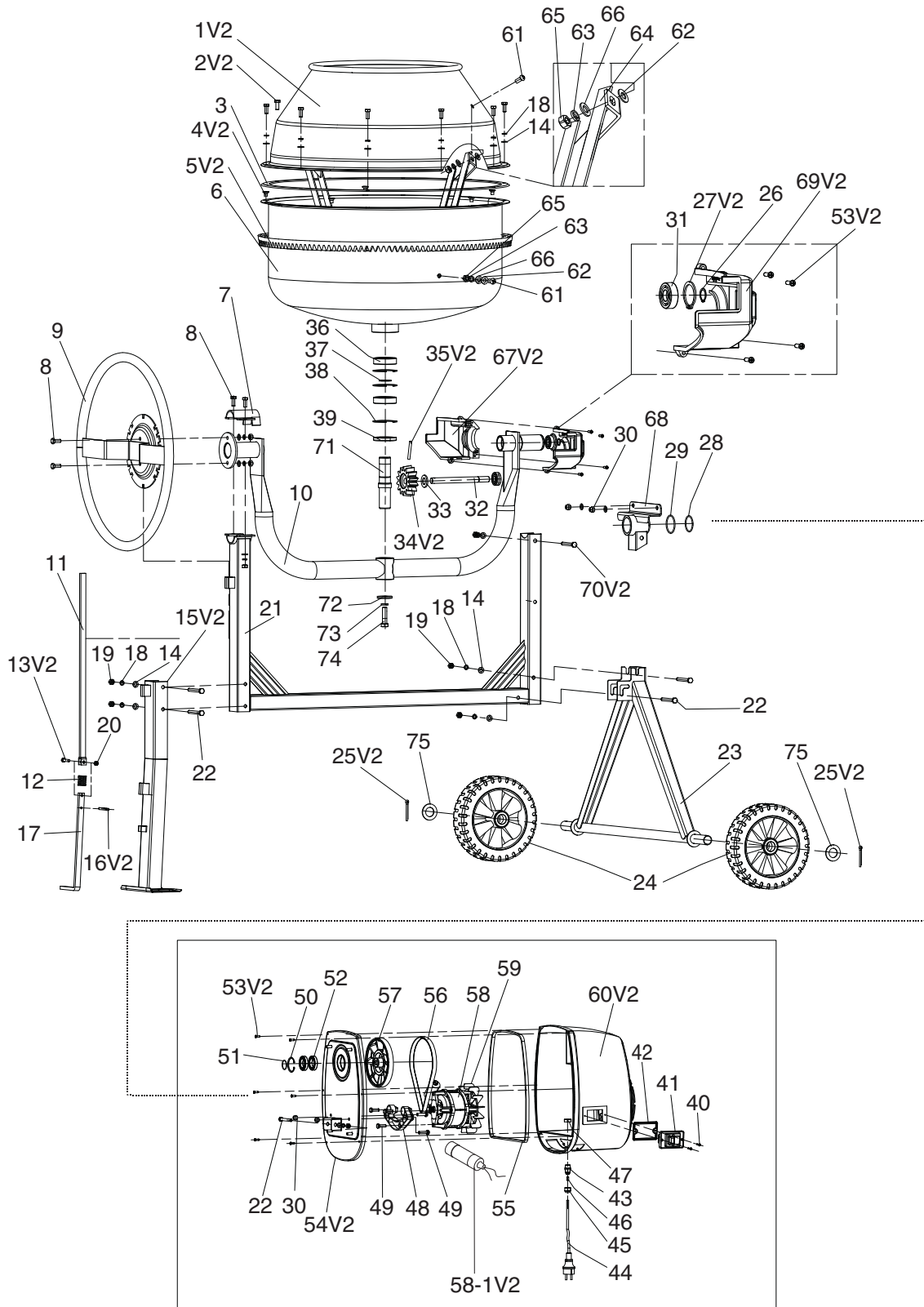


SECTION 7: PARTS

Main Breakdown



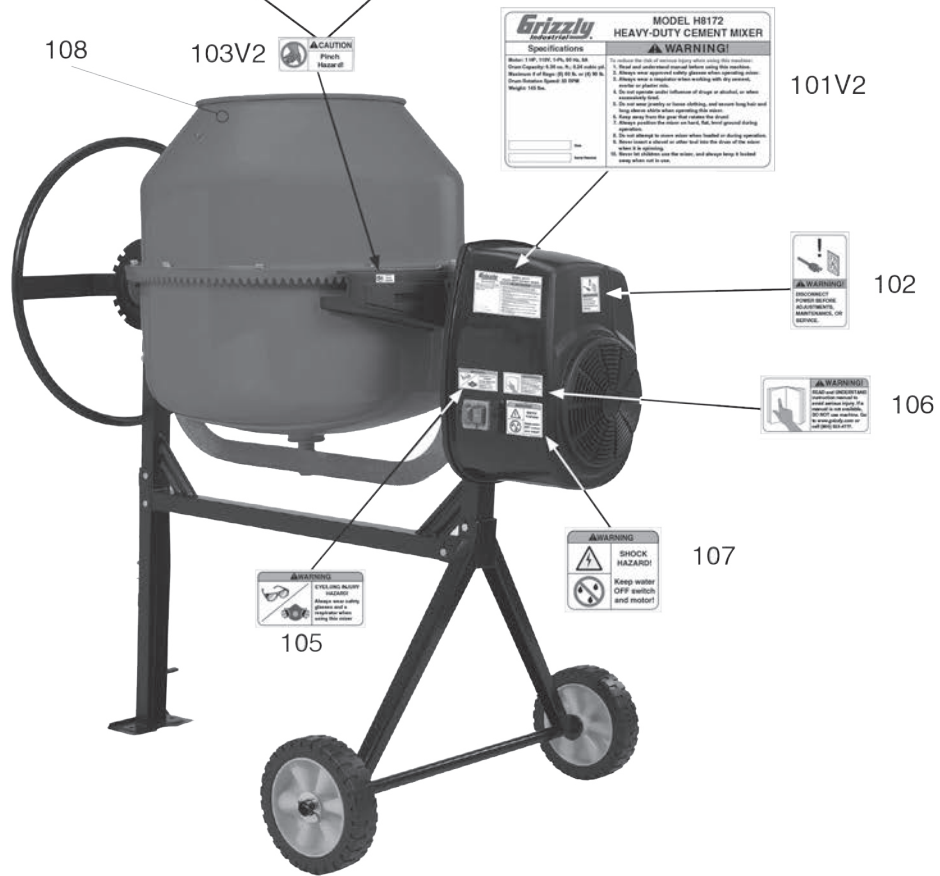
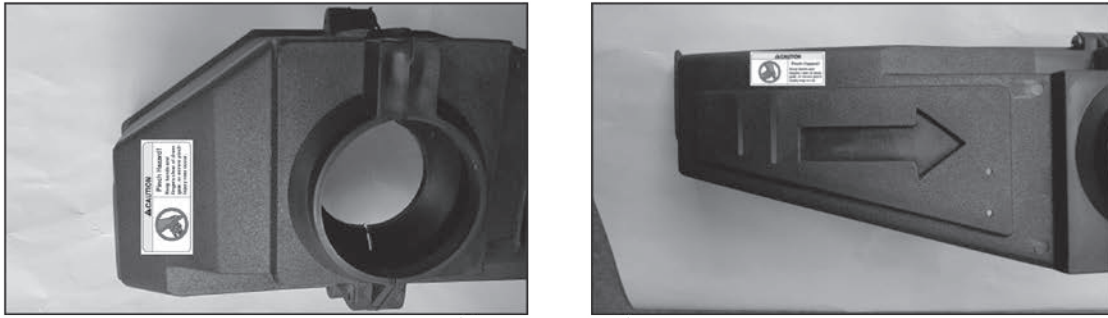
Main Parts List

REF	PART #	DESCRIPTION
1V2	PH8172001V2	UPPER DRUM V2.05.12
2V2	PH8172002V2	HEX BOLT M8-1.25 X 20
3	PH8172003	RUBBER GASKET
4V2	PH8172004V2	FLAT HD SCR M8-1.25 X 12
5V2	PH8172005V2	BIG COGWHEEL V2.05.12
6	PH8172006	LOWER DRUM
7	PH8172007	UPPER BRACKET
8	PH8172008	HEX BOLT M8-1.25 X 20
9	PH8172009	TIPPING WHEEL
10	PH8172010	SUPPORT ARM
11	PH8172011	UPPER PLUNGER ROD
12	PH8172012	COMPRESSION SPRING
13V2	PH8172013V2	HEX BOLT M6-1 X 30
14	PH8172014	FLAT WASHER 8MM
15V2	PH8172015V2	SUPPORT LEG V2.05.12
16V2	PH8172016V2	COTTER PIN 4 X 25 V2.05.12
17	PH8172017	LOWER PLUNGER ROD
18	PH8172018	LOCK WASHER 8MM
19	PH8172019	HEX NUT M8-1.25
20	PH8172020	LOCK NUT M6-1
21	PH8172021	FRAME
22	PH8172022	HEX BOLT M8-1.25 X 70
23	PH8172023	AXLE BRACKET
24	PH8172024	WHEEL
25V2	PH8172025V2	COTTER PIN 5 X 40MM STANDARD
26	PH8172026	EXT RETAINING RING 15MM
27V2	PH8172027V2	EXT RETAINING RING 47MM
28	PH8172028	SNAP RING 42MM
29	PH8172029	O-RING 42 X 2.65
30	PH8172030	LOCK NUT M8-1.25
31	PH8172031	BALL BEARING 6202ZZ
32	PH8172032	DRIVE SHAFT
33	PH8172033	SLEEVE
34V2	PH8172034V2	DRIVE PINION V2.05.12
35V2	PH8172035V2	LOCK PIN 5 X 40 V2.05.12
36	PH8172036	BALL BEARING 6206ZZ
37	PH8172037	EXT RETAINING RING 30MM
38	PH8172038	INT RETAINING RING 62MM

REF	PART #	DESCRIPTION
39	PH8172039	DUSTPROOF COVER
40	PH8172040	TAP SCREW M3.5 X 16
41	PH8172041	SWITCH
42	PH8172042	GASKET
43	PH8172043	STRAIN RELIEF
44	PH8172044	POWER CORD 18G 2W 12" 1-15 P
45	PH8172045	STRAIN RELIEF NUT
46	PH8172046	STRAIN RELIEF RUBBER
47	PH8172047	STRAIN RELIEF NUT
48	PH8172048	MOTOR MOUNT BRACKET
49	PH8172049	HEX BOLT M8-1.25 X 30
50	PH8172050	INT RETAINING RING 47MM
51	PH8172051	SNAP RING 30MM
52	PH8172052	BALL BEARING 6906ZZ
53V2	PH8172053V2	TAP SCREW M4 X 16
54V2	PH8172054V2	END PLATE V2.05.12
55	PH8172055	GASKET
56	PH8172056	V-BELT 6PJ630
57	PH8172057	IDLER PULLEY
58	PH8172058	MOTOR 1HP 110V 1-PH
58-1V2	PH8172058-1V2	R CAPACITOR 16M 450V 1-3/8 x 3 V2.10.14
59	PH8172059	MOTOR FAN
60V2	PH8172060V2	MOTOR COVER V2.05.12
61	PH8172061	PHLP HD SCR M10-1.5 X 20
62	PH8172062	PVC WASHER 10MM
63	PH8172063	LOCK WASHER 10MM
64	PH8172064	MIXING BLADE
65	PH8172065	HEX NUT M10-1.5
66	PH8172066	FLAT WASHER 10MM
67V2	PH8172067V2	SHORT GEAR GUARD V2.05.12
68	PH8172068	BEARING BLOCK
69V2	PH8172069V2	GEAR GUARD V2.05.12
70V2	PH8172070V2	HEX BOLT M8-1.25 X 65
71	PH8172071	FIXED SHAFT
72	PH8172072	FLAT WASHER 12MM
73	PH8172073	LOCK WASHER 12MM
74	PH8172074	HEX BOLT M12-1.75 X 35
75	PH8172075	FLAT WASHER 27MM



Labels & Cosmetics



REF	PART #	DESCRIPTION
101V2	PH8172101V2	MACHINE ID LABEL V2.05.12
102	PH8172102	SMALL DISCONNECT PWR LABEL
103V2	PH8172103V2	SMALL DRUM PINCH LABEL V2.05.12
105	PH8172105	SMALL EYE/LUNG LABEL

REF	PART #	DESCRIPTION
106	PH8172106	SMALL READ MANUAL LABEL
107	PH8172107	MOTOR/WATER SHOCK LABEL
108	PH8172108	GRIZZLY GREEN TOUCH-UP PAINT

⚠️ WARNING

Safety labels warn about machine hazards and ways to prevent injury. The owner of this machine **MUST** maintain the original location and readability of the labels on the machine. If any label is removed or becomes unreadable, **REPLACE** that label before using the machine again. Contact Grizzly at (800) 523-4777 or www.grizzly.com to order new labels.

